

1342 Series

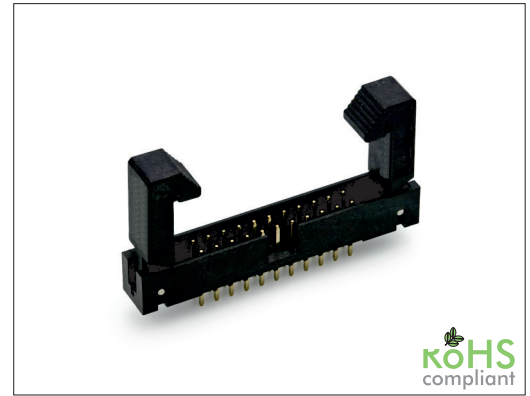
2.00 mm Box Header w/ Latches

General specifications

Insulator material	Nylon-6T, UL94V-0, color: black
Contact material	Brass
Current rating	2 A
Contact resistance	20 mΩ max.
Insulator resistance	5000 MΩ min.
Dielectrical withstanding	500 VAC for 1 min
Operating temperature	-40 °C to 105 °C
Soldering	Lead free wave soldering process

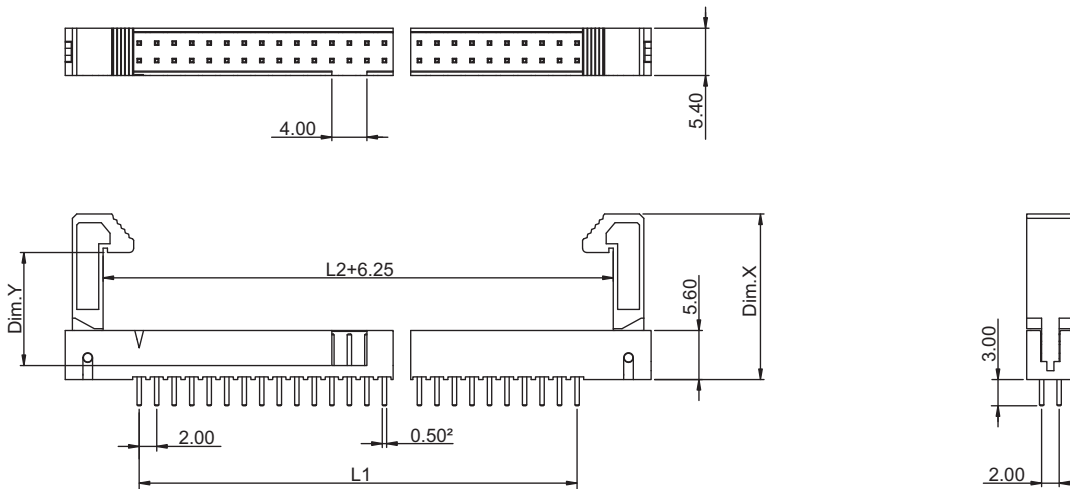
Mating parts series

1489, 1490, CA0001 or cable assembly

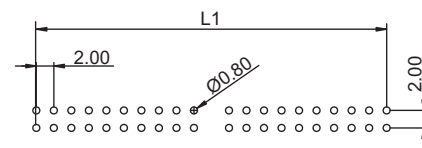
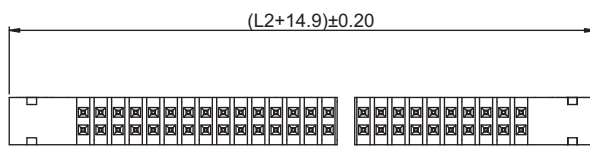


Mechanical dimensions

Unit: mm



Latches	Dim. X	Dim. Y
Long	18.90	12.90
Short	15.00	8.90



Recommended P.C.B. layout

$$L1 = \left(\frac{\text{No. of contacts}}{2} - 1 \right) \times 2.00$$

$$L2 = \left(\frac{\text{No. of contacts}}{2} \right) \times 2.00$$

Tolerances		
Linear	X	± 0.30
	.XX	± 0.20
	.XXX	± 0.10

Part numbering guide

1342 S	16	B	A
Series S = THT straight	No. of contacts 16 to 100	Contact plating B = Flashgold E = 10 μ" gold F = 15 μ" gold J = 30 μ" gold	Latches A = Long latches B = Short latches

* standard

