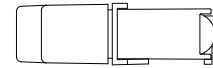
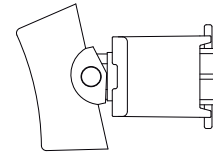


Specifications	
Contact rating	0.4 VA max. @ 20 V AC / DC
Durability	30000 cycles at full load
Contact resistance	20 mΩ max. initial @ 3 VDC, 100 mA
Insulator resistance	1000 MΩ min.
Dielectrical withstanding	1500 VAC
Degree of protection	IP67
Operation temperature	-30 °C to +85 °C
Materials	
Case and bushing	Glass filled nylon PA6T, UL94V-0
Actuator	Nylon
Contact and terminal	Copper alloy, plating: see order code and table
Switch support	Copper alloy, plating: tin
Terminal seal	Epoxy



Part numbering guide

S **W** - **E** **R** - **3** - **A** **2** - **2** - **N** **R** **T/R** - **H**

Switches Function		Actuator		Actuator Color		Contact Plating		Package	
ER-3	SP on-none-on	A1	Std. 7.62	1	white	Q	silver	(none)	polly bag
ER-3B	SP on-none-(on)	A2	Std. 5.84	2	black (std.)	R	gold	T/R	tape & reel
ER-3A	SP on-off-on			3	Red	G	gold over silver		
ER-3H	SP (on)-off-(on)					K	gold / tin		
ER-3I	SP on-off-(on)								
				Marking				RoHS Code	
				(none)	No marking			H = RoHS Compliant	
				1					
				2					
				Terminal					
				(none)	std				
				N	backward				
				M	backward				

Contact material option

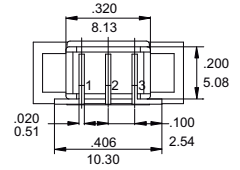
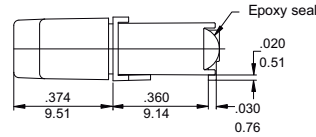
Code	Contact material	Terminal material	Rating
Q	Silver plated	Silver plated	3 A @ 120V AC or 28 V DC; 1.5 A @ 250 VAC
R	Gold plated over nickel plated	Gold plated over nickel plated	0.4VA MAX @ 20 V AC or DC MAX
G	Gold plated over silver plated	Gold plated over silver plated	0.4VA MAX @ 20 V AC or DC MAX or 3 A @ 120V AC or 28 V DC; 1.5 A @ 250 VAC
K	Gold plated over nickel plated	Tin over nickel plated	0.4VA MAX @ 20 V AC or DC MAX

continued on page 2



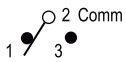


Model No.	Switching position		
ER-3	ON	none	ON
ER-3A	ON	OFF	ON
ER-3B	ON	None	(ON)
ER-3H	(ON)	OFF	(ON)
ER-3I	ON	OFF	(ON)
Term. Comm.	2-3	open	2-1

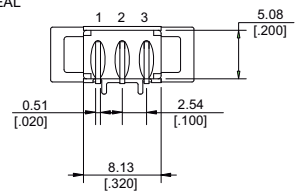
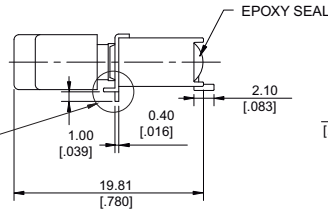
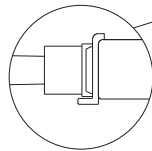
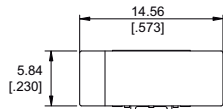


SW-ER-3-A2-2-R

Terminal option type -M and -N

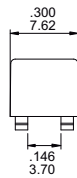
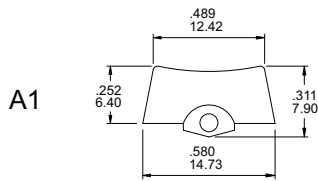


Model No.	Switching position		
ER-3	ON	none	ON
ER-3A	ON	OFF	ON
ER-3B	ON	None	(ON)
ER-3H	(ON)	OFF	(ON)
ER-3I	ON	OFF	(ON)
Term. Comm.	2-3	open	2-1

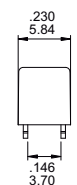
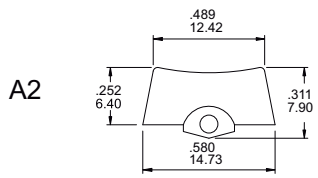
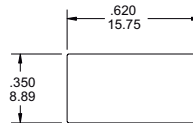


SW-ER-3-A2-2-MR

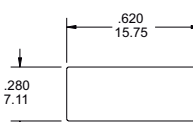
Actuator option



PANEL MOUNTING



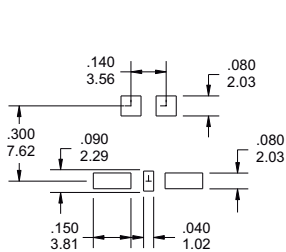
PANEL MOUNTING



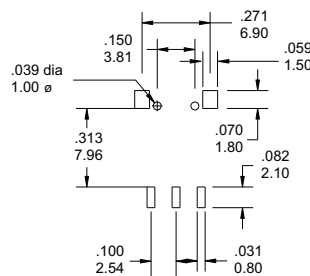
Actuator color

Code	Color
1	white
2	black (std.)
3	red

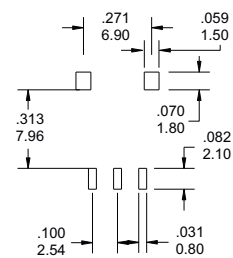
Recommended P.C.B. layout



SW-ER-3-A_



SW-ER-3-A_-M



SW-ER-3-A_-N

