

1675 Series

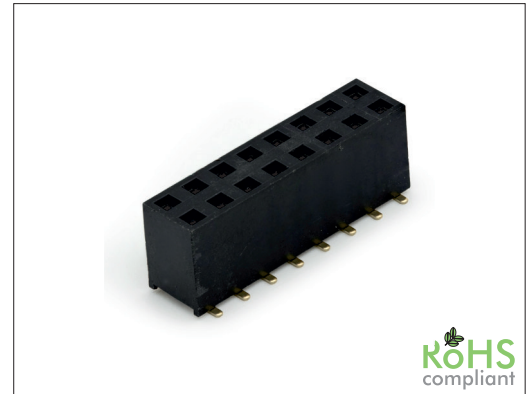
2.54 mm SMT Female Header Dual Row Dual Entry

General specifications

Insulator material	Nylon 6T, UL94V-0
Contact material	1675V: Phosphor bronze / 1675VC: Cu-Ni-Si (C7025)
Current rating	1675 V: 3 A / 1675VC: 4 A
Voltage rating	250 V AC/DC
Contact resistance	20 mΩ max.
Insulator resistance	5000 MΩ min.
Dielectrical withstanding	1000 VAC for 1 min
Operating temperature	-40 °C to +105 °C
Soldering	JEDEC lead free reflow soldering process

Mating parts series

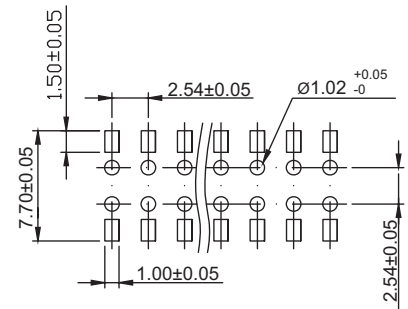
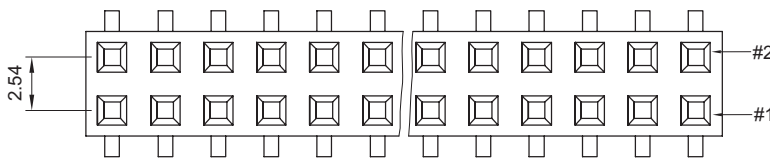
1520, 1525, 1534, 1620, 1622, 1634



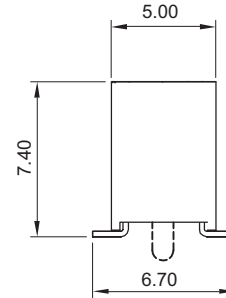
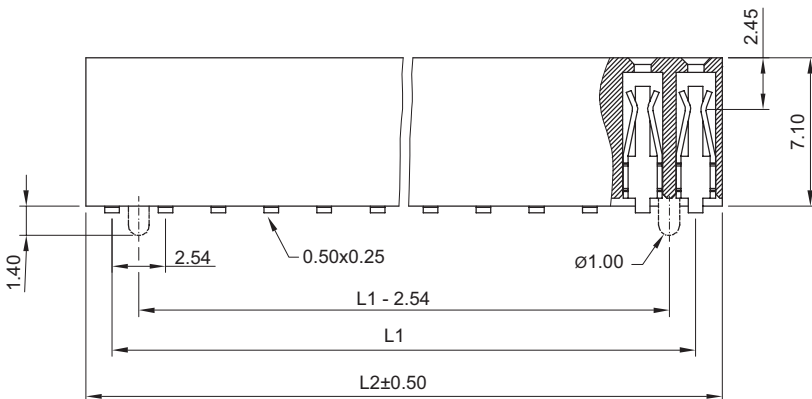
ROHS
compliant

Mechanical dimensions

Unit: mm



Recommended P.C.B. layout



$$L1 = \left(\frac{\text{No. of contacts}}{2} - 1 \right) \times 2.54$$

$$L2 = \left(\frac{\text{No. of contacts}}{2} \right) \times 2.54$$

Tolerances	
Linear	.X ± 0.38
	.XX ± 0.25

Part numbering guide

1675 V	06	B	0	R
Series V = SMT vertical* VC = SMT vertical w/ 4A contacts	No. of contacts 06 to 80	Contact plating B = Flashgold E = 10 μ" gold F = 15 μ" gold J = 30 μ" gold	Position peg 0 = w/o peg 1 = w/ peg	Packing with pick & place pad R = Reel T = Tube

* standard

