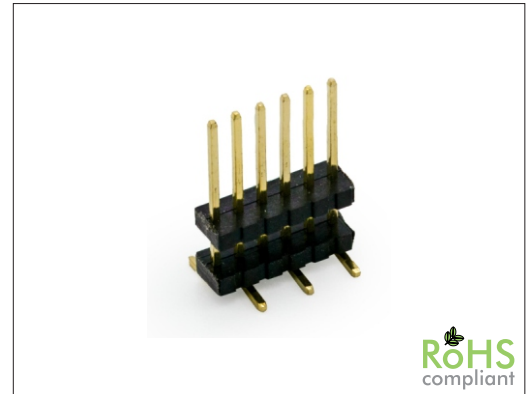


1161 Series 1.27 x 1.27 mm SMT Board Spacer

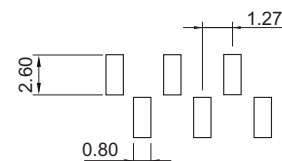
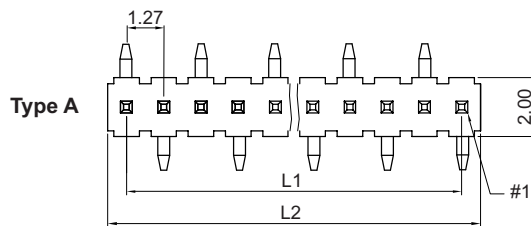
General specifications

Insulator material	Nylon-6T, UL94V-0, color: black
Contact material	Brass
Current rating	1 A
Contact resistance	20 mΩ max.
Insulator resistance	1000 MΩ min.
Dielectrical withstanding	500 VAC for 1 min
Operating temperature	-40 °C to +105 °C
Soldering	JEDEC lead free reflow soldering process
Mating parts series	
1130, 1131, 1180, 1181, 1187	

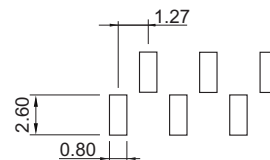
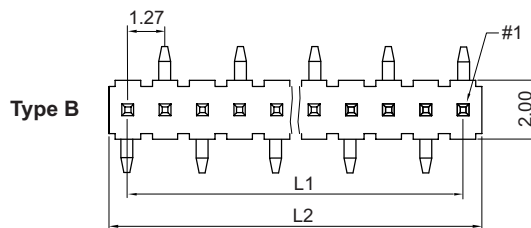
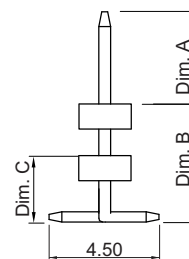
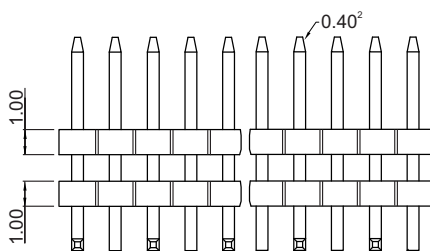


Mechanical dimensions

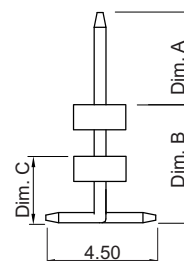
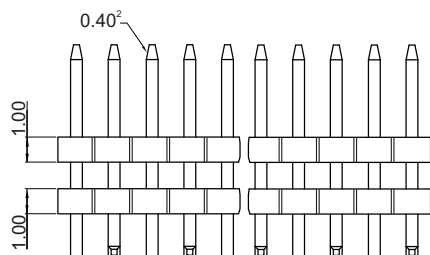
Unit: mm



Recommended P.C.B. layout



Recommended P.C.B. layout



$$L1 = \left(\frac{\text{No. of contacts}}{2} - 1 \right) \times 1.27$$

$$L2 = \left(\frac{\text{No. of contacts}}{2} \right) \times 1.27$$

Ordercode dimensions			
Index	Dim. A	Dim. B	Dim. C
00	6.00	4.50	1.50
01	4.00	6.70	1.50
02	5.50	9.50	1.50
Other pin length on customer request			

Tolerances	
Linear	X ± 0.38
	.XX ± 0.25

Part numbering guide

1161 V	03	B	A	R	00
Series V = SMT vertical	No. of contacts 03 to 50	Contact plating B = Flashgold E = 10 μ" gold F = 15 μ" gold J = 30 μ" gold	Position #1 A = Bottom right B = Top right	Packing with pick & place pad R = Reel (max. total header height 20 mm) T = Tube	Dimensions index See table

* standard

