

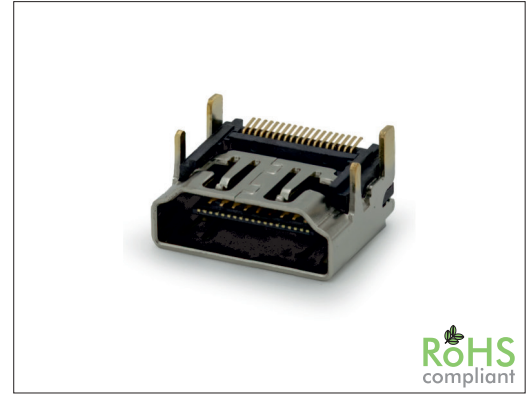
3600 Series

SMT HDMI 19 Pin

General specifications

Insulator material	High temperature thermoplastic, UL94V-0, color: black
Contact material	Copper alloy
Shell material	Copper alloy
Current rating	0.5 A
Voltage rating	40 VAC (rms)
Contact resistance	30 mΩ max.
Insulator resistance	100 MΩ min.
Dielectrical withstanding	500 VAC for 1 min
Operating temperature	-25 °C to +85 °C
Soldering	JEDEC lead free reflow soldering process

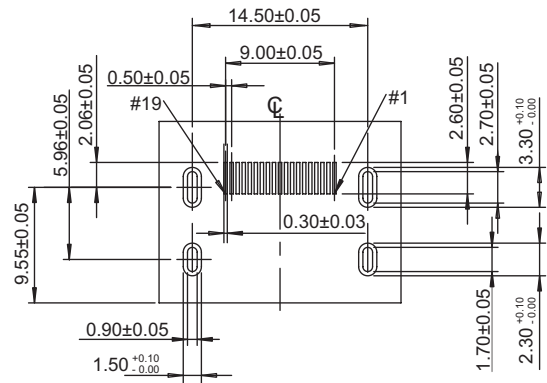
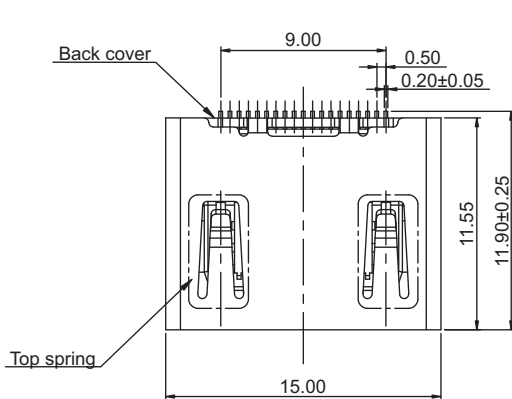
Mating parts series



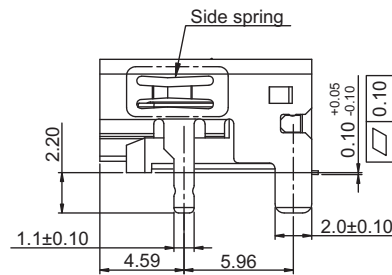
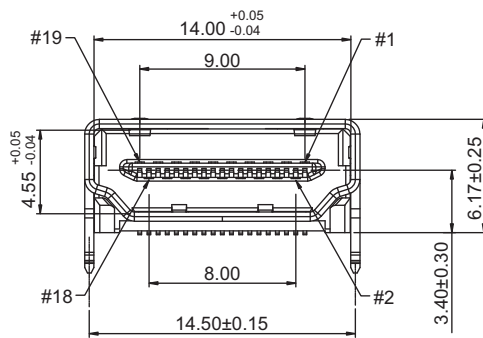
RoHS
compliant

Mechanical dimensions

Unit: mm



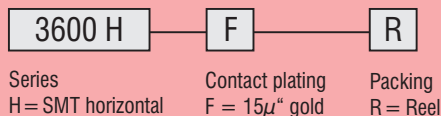
Recommended P.C.B layout
Thickness: 1.60, Tolerances: ±0.05



Tolerances

Linear	X.	± 0.30
	.X	± 0.20
	.XX	± 0.10
	.XXX	± 0.05

Part numbering guide



* standard

