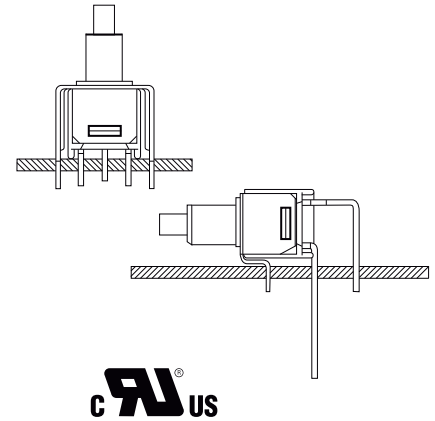


# SW-TS40PL Series Sub-Miniature Pushbutton Switches (Lock)

Specifications	
Contact rating	1.5 A @ 250 VAC or 28 VDC
Durability	6000 cycles at full load
Contact resistance	20 mΩ max. initial @ 3 VDC, 100 mA
Insulator resistance	1000 MΩ min.
Dielectrical withstanding	1500 VAC
Operation temperature	-30 °C to +85 °C
Materials	
Case	Diallyl phthalate (DAP)
Plunger	Nylon
Bushing	Copper alloy, plating: nickel
Housing	Stainless steel
Contact and terminal	Copper alloy, plating: see order code and table
Switch support	Copper alloy, plating: tin



## Straight type - part numbering guide

**S** **W** - **T** **L** - **2** **2** - **S** **C** **Q** - **E** - **A** **5** - **H**

Switches Function		Bushing		Termination		Epoxy Seal		Vertical Support Bracket	
TL-22	SPDT on-mom.	S	10-48 thd.(FLAT)	C	straight type	(none)	none seal	(none)	straight type (std.)
		U	none thd.(FLAT)			E	epoxy seal	A5	snap-in type
		T	none thd.(ROUND)					A5S	
				Contact Plating					
				Q	silver				
				R	gold				
				G	gold over silver				
				K	gold / tin				
						RoHS Code			
						H = RoHS Compliant			

## Right angle type - part numbering guide

**S** **W** - **T** **L** - **2** **2** **A** - **U** **Q** - **E** -  - **H**

Right Angle Horizontal	Right Angle Vertical	Switches Function	Bushing		Contact Plating		Epoxy Seal	
TL-22A	TL-22B	SPDT on-mom.	S	10-48 thd.(FLAT)	Q	silver	(none)	none seal
			U	none thd.(FLAT)	R	gold	E	epoxy seal
			T	none thd.(ROUND)	G	gold over silver		
					K	gold / tin		
							Support Bracket	
							(none)	straight type(std.)
							S	snap-in type
							RoHS code	
							H = RoHS Compliant	

## Contact material option

Code	Contact material	Terminal material	Rating
Q	Silver plated	Silver plated	1.5 A @ 250V AC or 28 V DC;
R	Gold plated over nickel plated	Gold plated over nickel plated	0.4VA MAX @ 20 V AC or DC MAX
G	Gold plated over silver plated	Gold plated over silver plated	0.4 VA MAX @ 20 V AC or DC MAX or 1.5 A @ 250V AC or 28 V DC;

continued on page 2

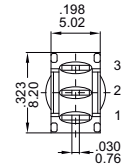
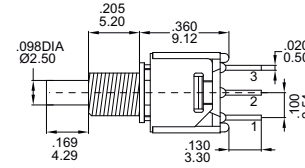
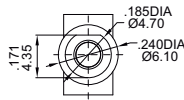


# SW-TS40PL Series Sub-Miniature Pushbutton Switches (Lock)

## SPDT



Model No.	Switching position	
TL-22	On	On
Term. Comm.	2-1	2-3

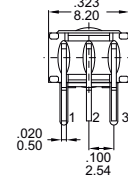
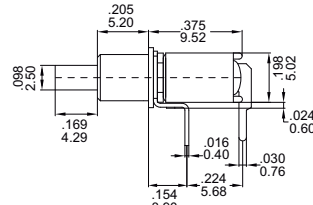
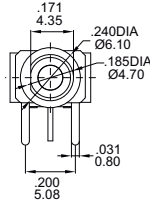
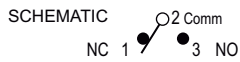


SW-TL-22- SCQ

## SPDT



Model No.	Switching position	
TL-22A	On	On
Term. Comm.	2-1	2-3

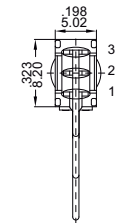
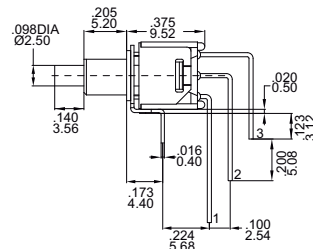
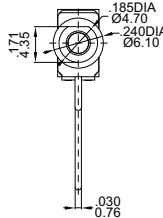


SW-TL-22A-UQ

## SPDT



Model No.	Switching position	
TL-22B	On	On
Term. Comm.	2-1	2-3

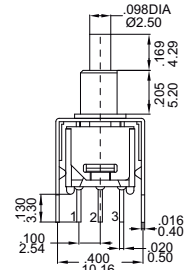
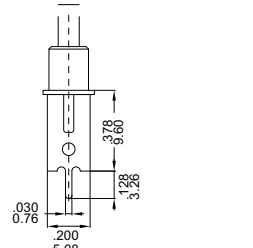
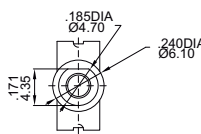
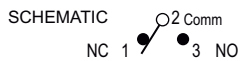


SW-TL-22B- UQ

## SPDT

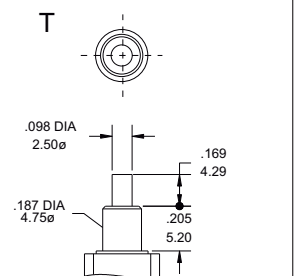
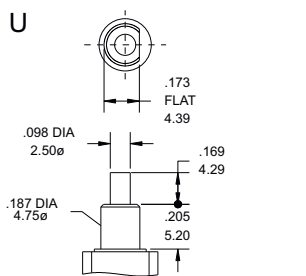
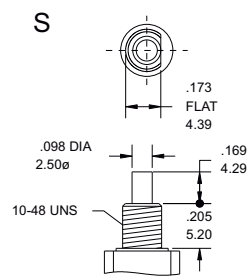


Model No.	Switching position	
TL-22-A5	On	On
Term. Comm.	2-1	2-3



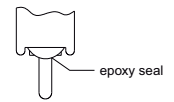
SW-TL-22-UCQ-A5

## Bushing option



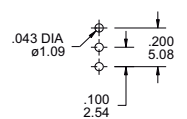
## Terminal seal option

-E Terminal seal

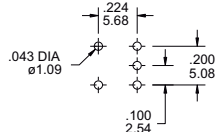


## Recommended P.C.B. layout

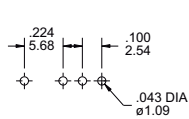
TL-22 (PC terminal)



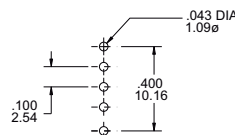
TL-22A



TL-22B



TL-22-A5



## Panel mounting dimension

10-48 BUSHING

