

2102 Series

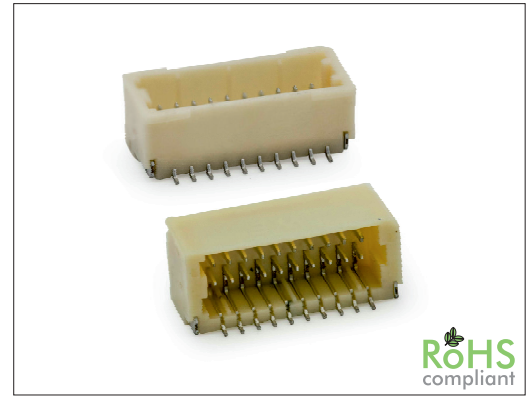
1.00 mm SMT Pin Header Dual Row

General specifications

Insulator material	Nylon 6T w/ 30% glass fiber, UL94V-0, color: nature
Contact material	Phosphor bronze
Current rating	1 A
Voltage rating	50 V AC/DC
Contact resistance	20 mΩ max.
Insulator resistance	100 MΩ min.
Dielectrical withstanding	200 VAC for 1 min
Operating temperature	-25 °C to +85 °C
Soldering	JEDEC lead free reflow soldering process

Mating parts series

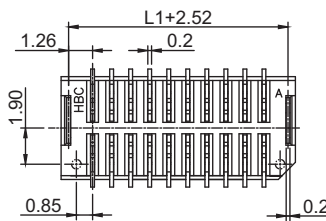
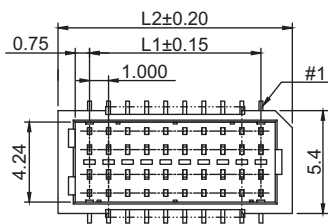
2102-PT or cable assembly



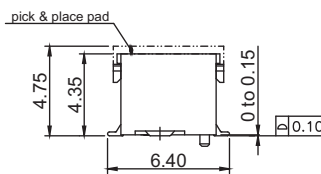
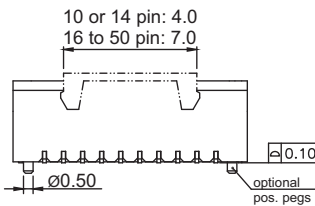
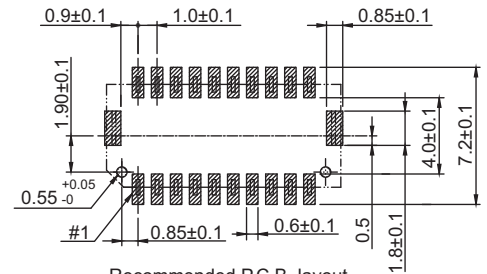
Mechanical dimensions

Unit: mm

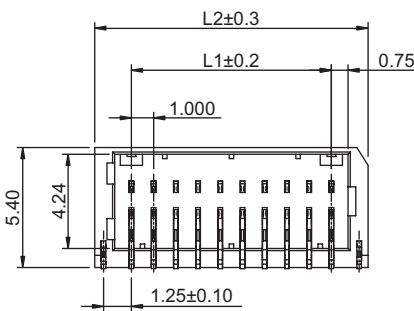
2102V



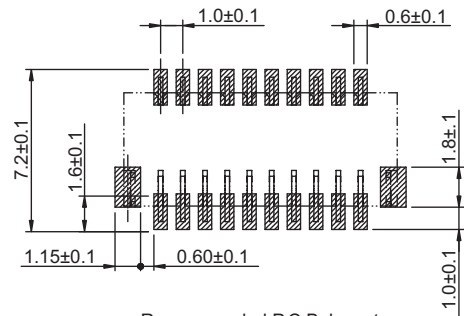
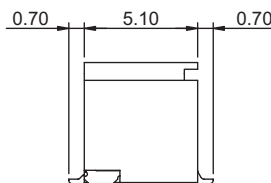
L1 = No. of contacts x 1.00 - 1.00
L2 = L1 + 3.3



2102H



L1 = No. of contacts / 2 x 1.00 - 1.00
L2 = L1 + 3.3



Tolerances

Linear	X	± 0.30
	.XX	± 0.20
	.XXX	± 0.10

Part numbering guide

2102 H

10

B

R

Series

H = SMT horizontal w/o pos. pegs

V = SMT vertical w/o pos. pegs

VP = SMT vertical w/ pos. pegs

No. of contacts

horizontal: 12, 16, 20,

30, 40, 50

vertical: 10, 14, 16, 20,

24, 30, 40, 50

Contact plating

B = Flashgold

Packing

R = Reel

T = Tube

* standard

