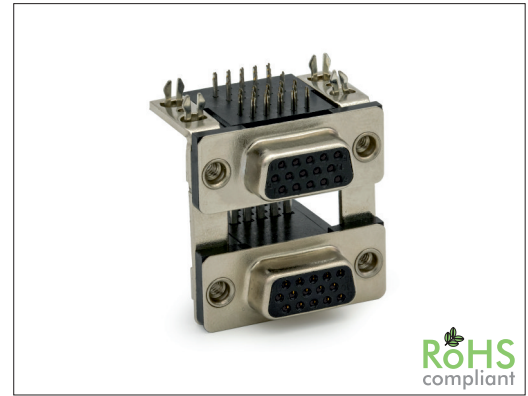


# 3080 Series

# Dual HD D-Sub Female

### General specifications

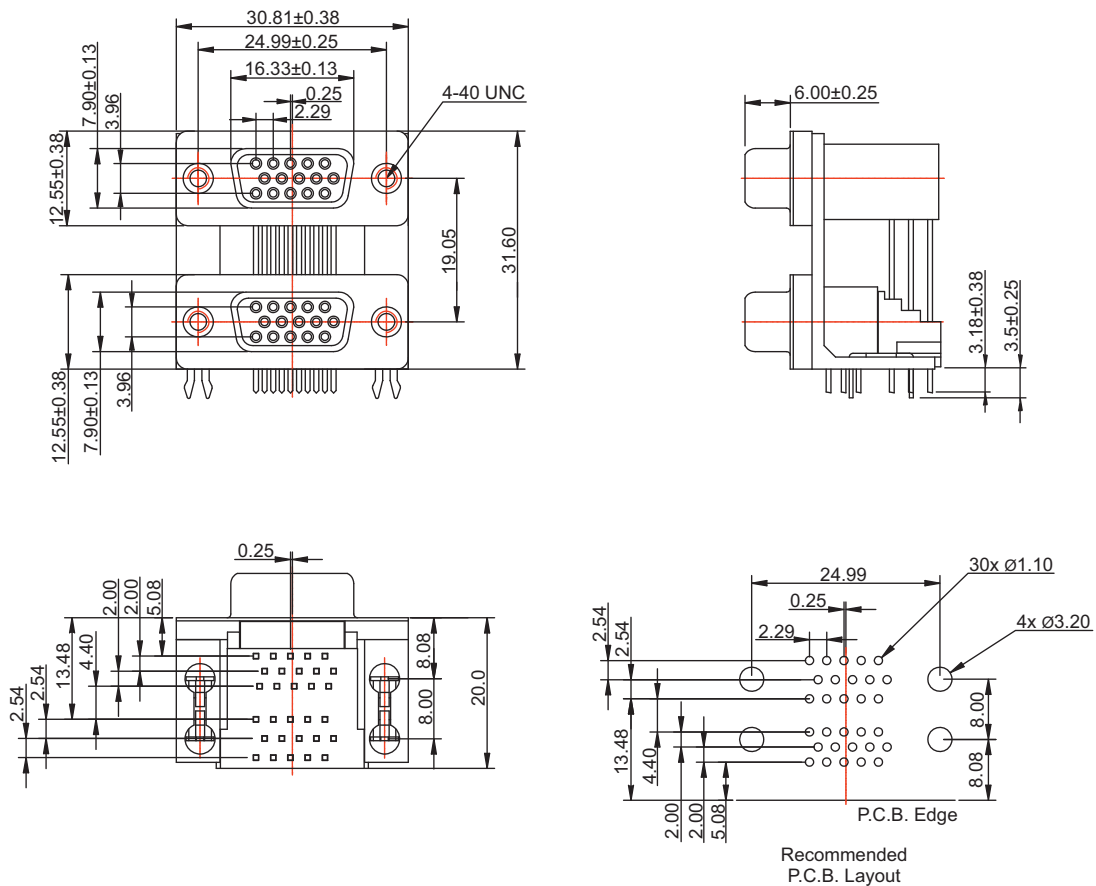
Insulator material	PBT, UL94V-0
Contact material	Copper alloy, metal shell: SPCC
Current rating	3 A
Contact resistance	25 mΩ max.
Insulator resistance	1000 MΩ min.
Dielectrical withstanding	500 VAC for 1 min
Operating temperature	-55 °C to +105 °C
Soldering	JEDEC lead free wave soldering process
<b>Mating parts series</b>	



### Mechanical dimensions

Unit: mm

#### 2x 15 contacts



Recommended P.C.B. Layout

Tolerances		
Linear	X	$\pm 0.25$
	.XX	$\pm 0.15$

continued on page 2

### Part numbering guide

<b>3080 F</b>	<b>01</b>	<b>B</b>	<b>0</b>
Series F = Female	No. of contacts 01 = 15 / 15 02 = 26 / 26	Contact plating B = Flashgold* E = $10\mu$ " gold F = $15\mu$ " gold J = $30\mu$ " gold	Mounting type 0 = w/o screws

\* standard



