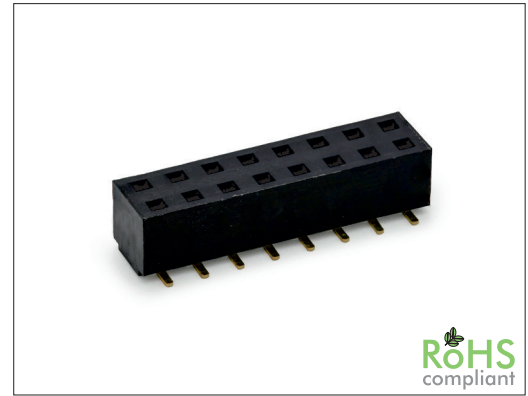


1673 Series

2.54 mm SMT Female Header Dual Row Dual Entry

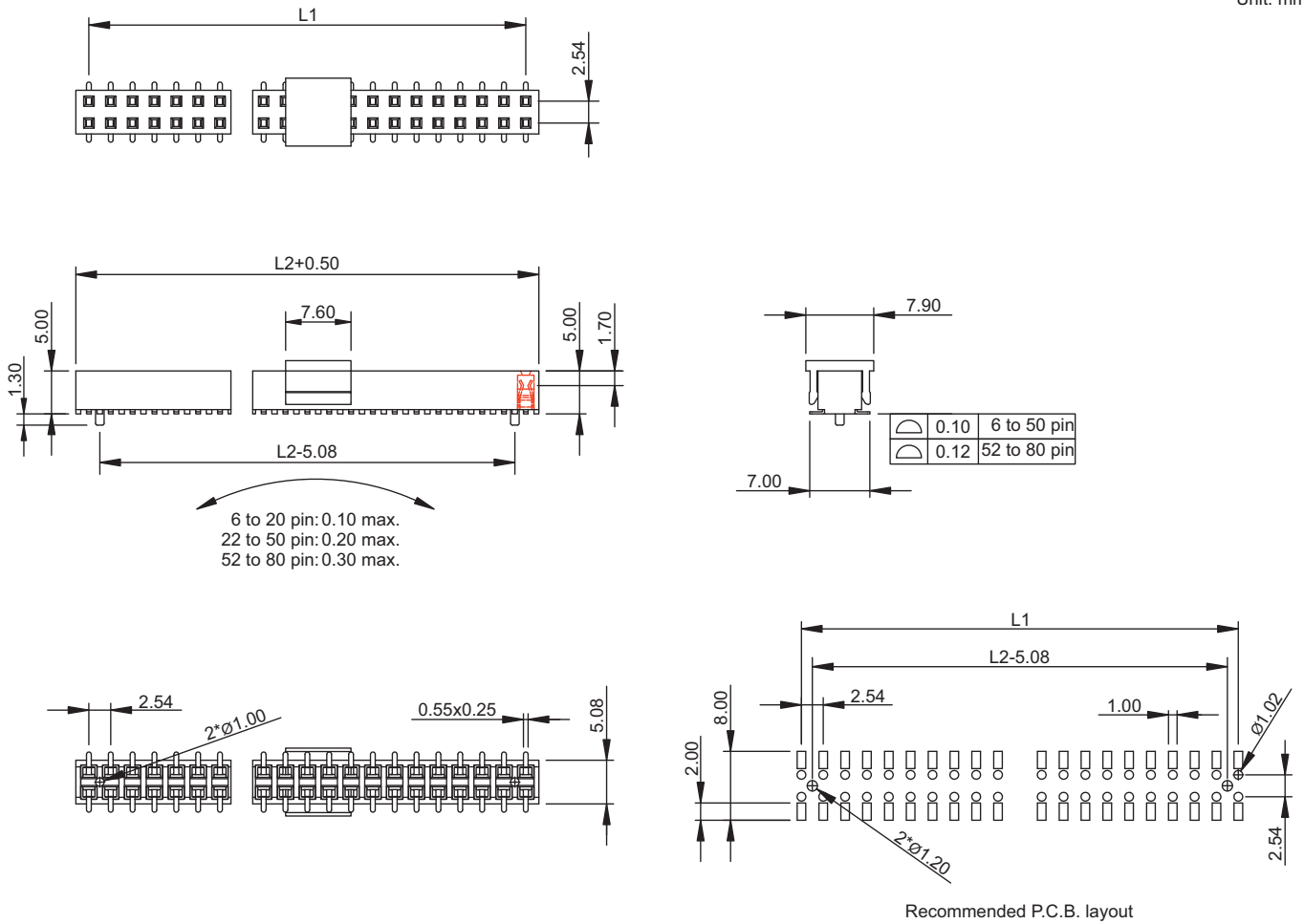
General specifications

Insulator material	High temperature plastic, UL94V-0
Contact material	Phosphor bronze
Current rating	3 A
Contact resistance	20 mΩ max.
Insulator resistance	5000 MΩ min.
Dielectrical withstanding	1000 VAC for 1 min
Operating temperature	-40 °C to +105 °C
Soldering	JEDEC lead free reflow soldering process
Mating parts series	
1520, 1525, 1534, 1620, 1622, 1634	



Mechanical dimensions

Unit: mm



$$L1 = \left(\frac{\text{No. of contacts}}{2} - 1 \right) \times 2.54$$

$$L2 = \left(\frac{\text{No. of contacts}}{2} \right) \times 2.54$$

Tolerances		
Linear	X	± 0.30
	.XX	± 0.20
	.XXX	± 0.10

Part numbering guide

1673 V	04	B	0	R
Series V = SMT vertical	No. of contacts 04 to 80	Contact plating B = Flashgold E = 10 μ" gold F = 15 μ" gold J = 30 μ" gold	Position peg 0 = w/o peg 1 = w/ peg	Packing with pick & place pad R = Reel T = Tube

* standard

