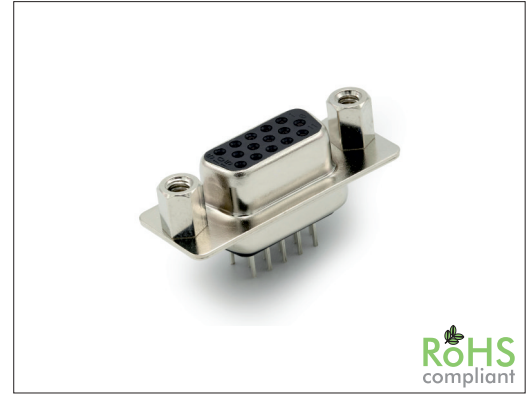


# 3050 Series

# HD D-Sub Female Straight, Height: 5.8 mm

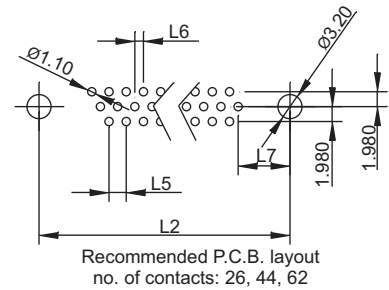
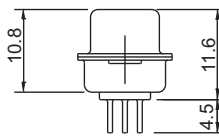
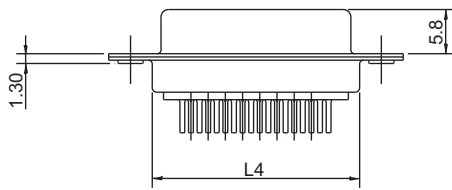
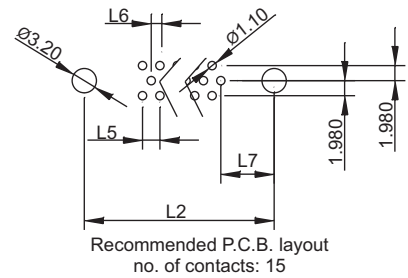
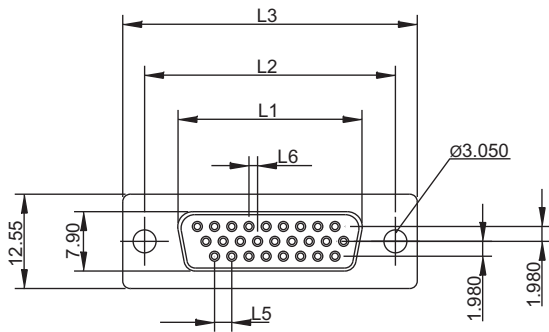
### General specifications

Insulator material	PBT, UL94V-0, color: black
Contact material	Copper alloy, metal shell: steel
Current rating	5 A
Contact resistance	15 mΩ max.
Insulator resistance	1000 MΩ min. @ 500 VDC
Dielectrical withstanding	500 VAC for 1 min
Operating temperature	-55 °C to +105 °C
Soldering	JEDEC lead free wave soldering process
<b>Mating parts series</b>	



### Mechanical dimensions

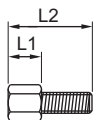
Unit: mm



Type 0 (w/o screws)	Type C (with rear screws)	Type E (with front screws)	Type G (with board-lock)	Type H (with board-lock)	Type I (with board-lock)

#### Ordercode for screws UNC4-40 only

Ordercode	L1	L2
3099U1	4.8	11.8
3099U9	5.8	12.0



Contacts	L1	L2	L3	L4	L5	L6	L7
15	16.33	24.99	30.81	19.23	2.29	1.145	7.04
26	24.66	33.32	39.14	27.56	2.29	1.145	6.88
44	38.38	47.04	53.04	41.28	2.29	1.145	6.88
62	54.84	63.50	69.32	57.33	2.41	1.205	7.00

Tolerances	
Linear	X ± 0.25
	.XX ± 0.15

### Part numbering guide



Series  
F = Female

No. of contacts  
15, 26, 44, 62

Contact plating  
B = Flashgold\*  
E = 10μ" gold  
F = 15μ" gold  
J = 30μ" gold

Mounting type  
O = w/o screws  
C = w/ rear screw 5.8 mm  
E = w/ front screws 5.8 mm  
G = w/ board lock

H = w/ board lock 6.1 mm  
I = w/ board lock 7.4 mm

\* standard

