

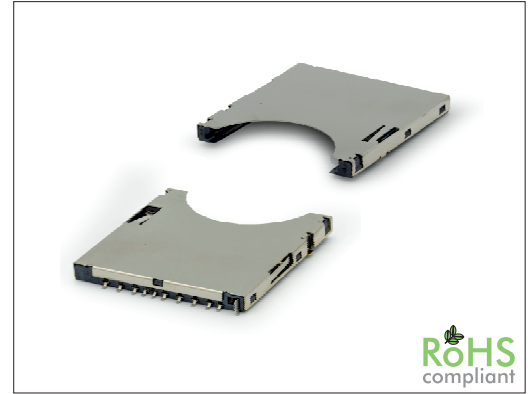
# 0228 Series

# SD SMT Push-Push Top Mount, w/o Standoff

## General specifications

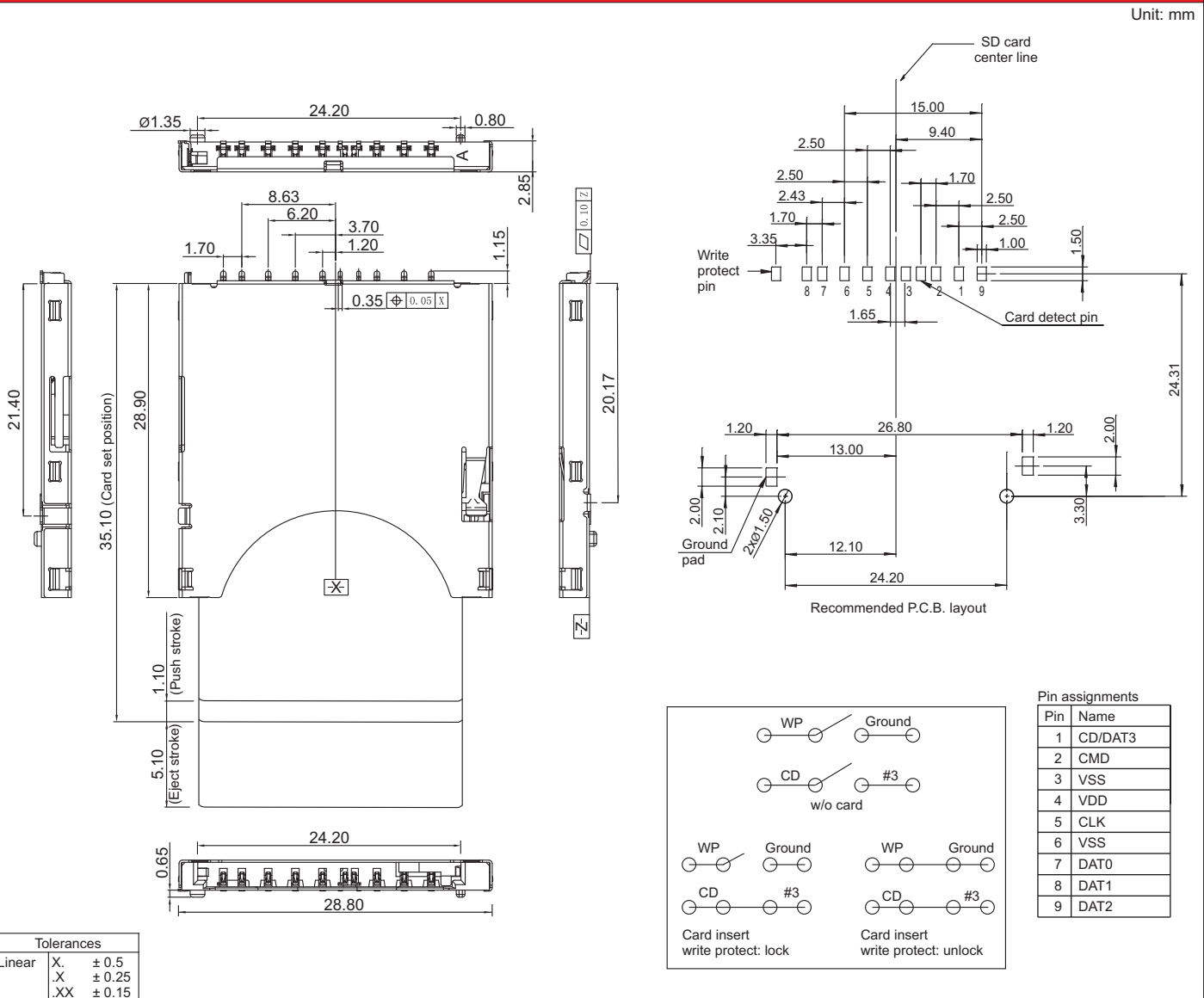
Insulator material	LCP, UL94V-0, color: black
Contact material	Phosphor bronze
Current rating	0.5 A
Voltage rating	250 V AC/DC
Contact resistance	100 mΩ max.
Insulator resistance	1000 MΩ @ 250 VDC
Dielectrical withstanding	500 VAC for 1 min
Operating temperature	static: -40 °C to +90 °C, handling: -25 °C to +90 °C
Durability	10000 cycles
Soldering	JEDEC lead free reflow soldering process

## Mating parts series



## Mechanical dimensions

Unit: mm



## Part numbering guide

**0228**

**F**

**R**

Series

Contact plating

B = Flashgold F = 15 μ" gold

D = 5 μ" gold J = 30 μ" gold

E = 10 μ" gold

Packing

R = Reel

Y = Tray

\* standard

