

3203 Series

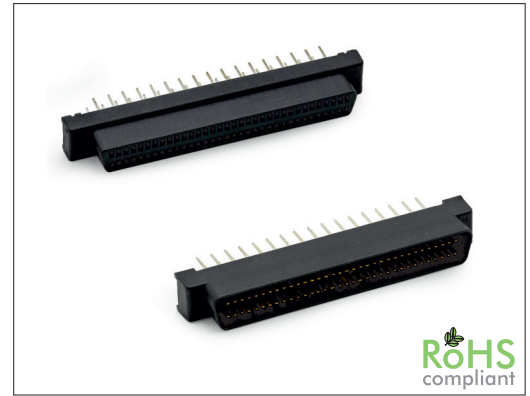
SCSI Pin Type Female or Male Straight

General specifications

Insulator material	PBT, UL94V-0
Contact material	Phosphor bronze
Shell/ bracket	Steel, plating: nickel over copper
Current rating	1 A
Contact resistance	35 mΩ max.
Insulator resistance	500 MΩ min.
Dielectrical withstanding	500 VAC for 1 min
Operating temperature	-55 °C to +105 °C
Soldering	Lead free wave soldering process

Mating parts series

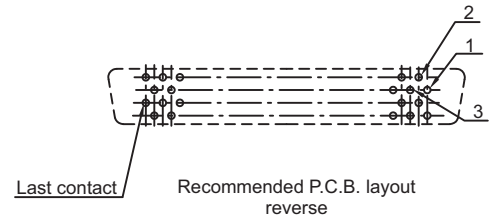
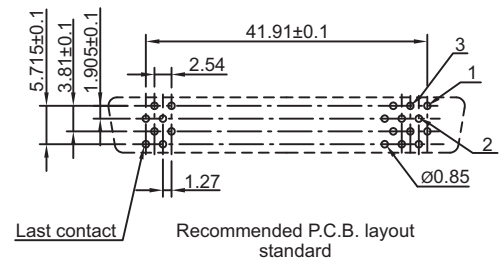
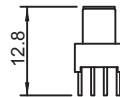
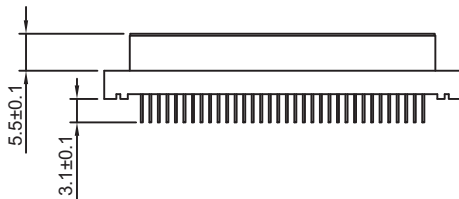
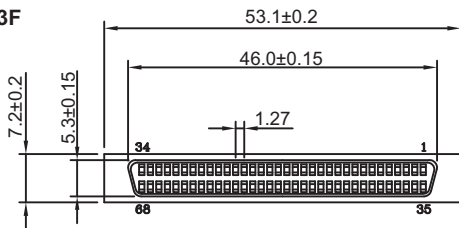
F: 3203-M, 3206-M, 3208-M / M: 3203-F, 3200, 3201, 3202, 3205, 3206-F, 3207, 3208-F



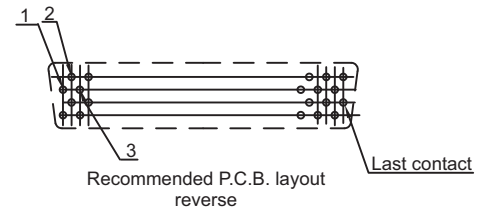
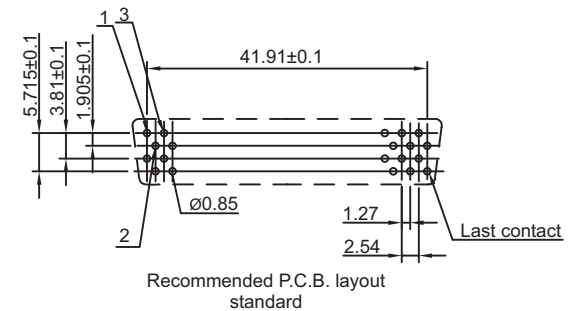
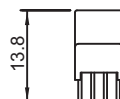
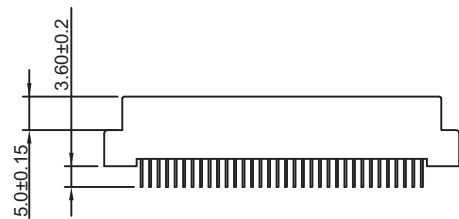
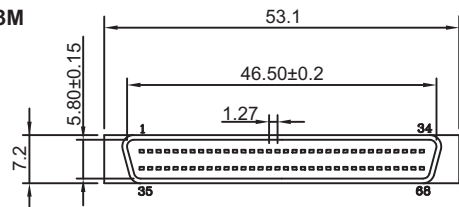
Mechanical dimensions

Unit: mm

3203F



3203M



Tolerances

Linear	X	± 0.30
	X	± 0.25
	XX	± 0.15

Part numbering guide



Series	No. of contacts	Contact plating	PC.B. layout
F = Female	68	D = 5 μm gold*	1 = Standard
M = Male		F = 15 μm gold	2 = Reverse
		J = 30 μm gold	

* standard

