

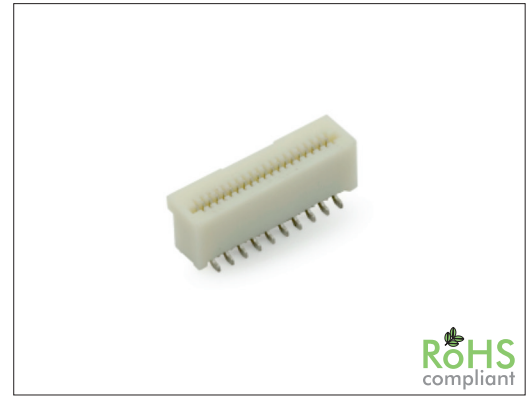
2957 Series

0.50 mm SMT FPC Socket Vertical

General specifications

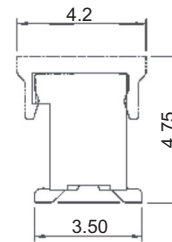
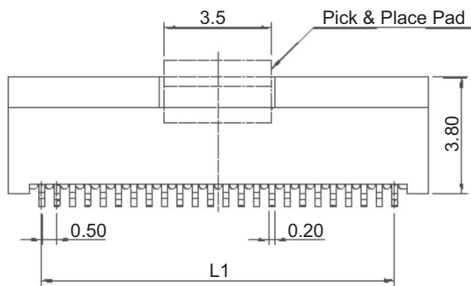
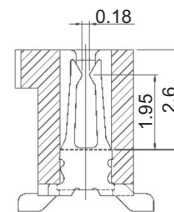
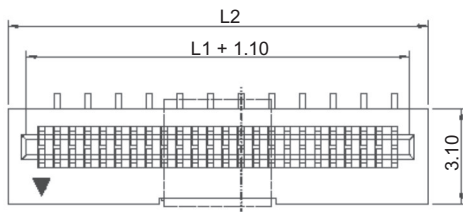
Insulator material	High temperature thermoplastic, UL94V-0
Contact material	Copper alloy
Current rating	0.5 A
Voltage rating	50 V AC/DC
Contact resistance	50 mΩ max.
Insulator resistance	500 MΩ min.
Dielectrical withstanding	150 VAC for 1 min
Operating temperature	-40 °C to +105 °C
Soldering	JEDEC lead free reflow soldering process

Mating parts series



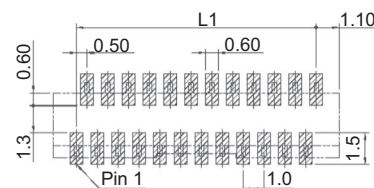
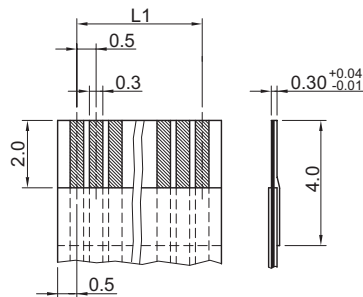
Mechanical dimensions

Unit: mm



$$L1 = (\text{No. of contacts} - 1) \times 0.50$$

$$L2 = \text{No. of contacts} \times 0.50 + 1.80$$



Recommended P.C.B. Layout

Accommodated FFC/FPC

Tolerances	
Linear	.X ± 0.15
	.XX ± 0.10

Part numbering guide

2957 V — 04 — B — R

Series
V = SMT vertical

No. of contacts
04 to 50

Contact plating
B = Flashgold
T = Tin

Packing
R = Reel
T = Tube

* standard

