

Series 43908 9x RCA Jack / Cinch Top Entry

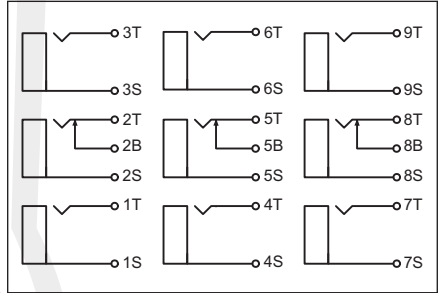
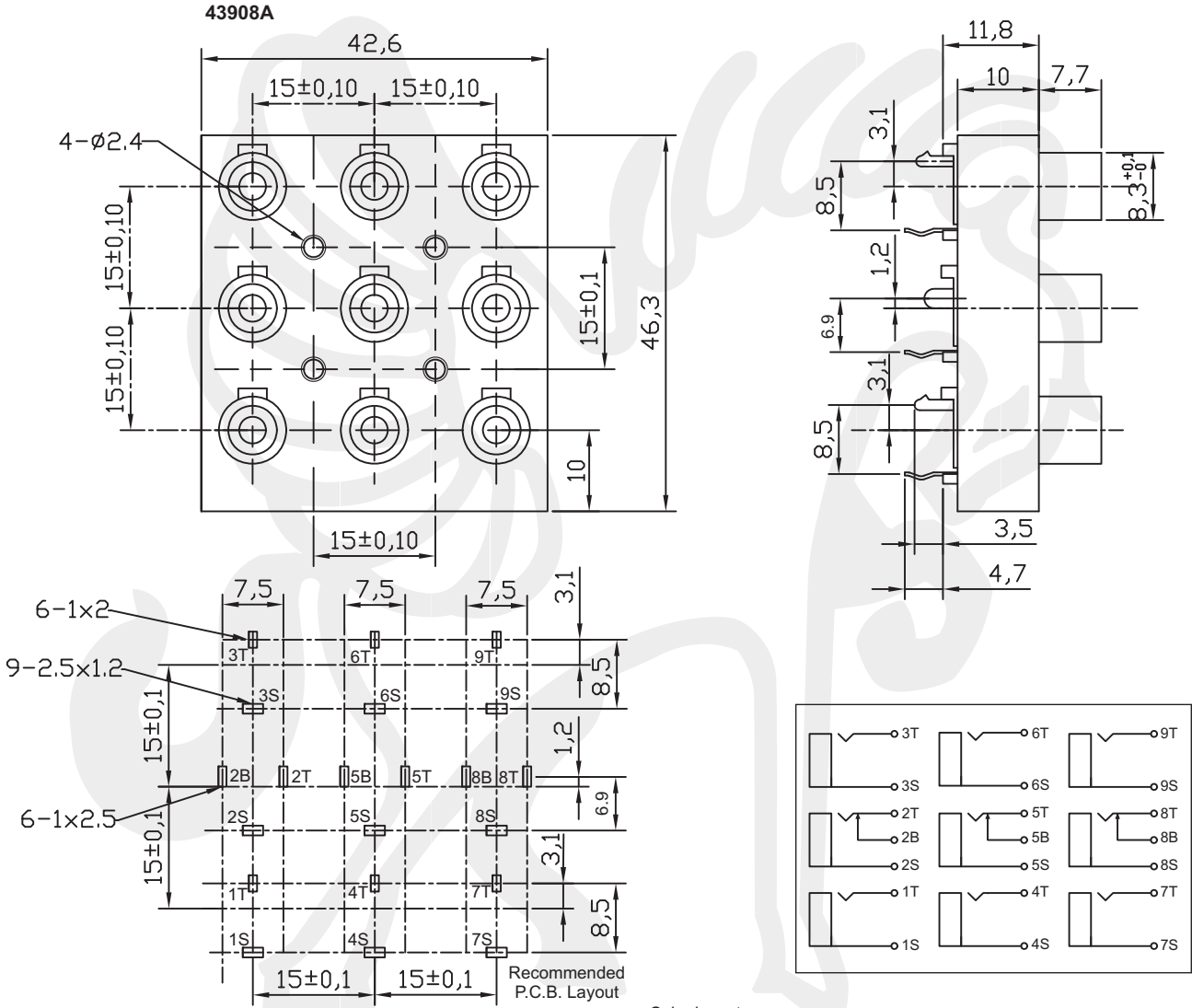
Material

Base, insulator: ABS
 Color washer: PBT + 15% glass fiber
 Contact break / needle: H65 Brass / QSn 6.5-0.1

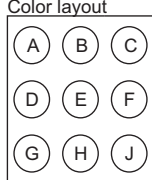
Electrical

Rating: 0.2 Amp @ 50 VDC
 Contact resistance: 30 mΩ max.
 Insulator resistance: 100 MΩ min.
 Dielectrical withstanding: 500 VAC/minute
 Operating temperature: -40°C ~ +70°C
 Durability: 500 cycles

43908A



Code	A D G	B E H	C F J
01	t.b.d. by customer		



Tolerances	
Linear	<6 ± 0.1 6-20 ± 0.2 >20 ± 0.3



All dim. in mm

43908 A — **01**

Series 43908A with switch
 43908B with switch
 43908C with switch

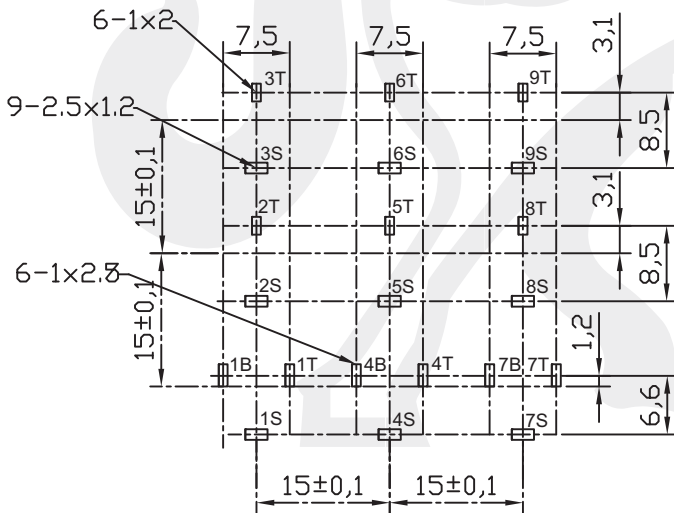
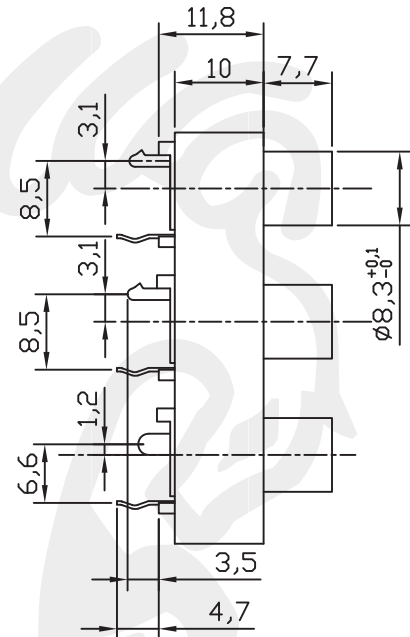
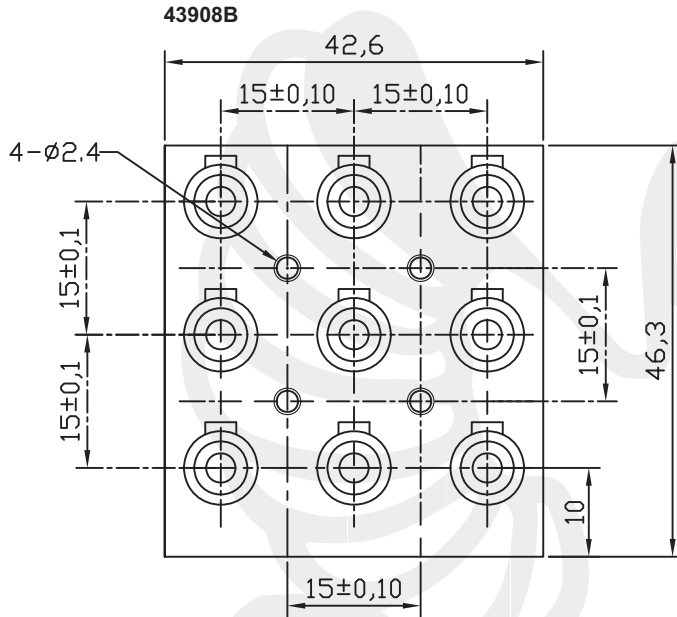
Color code see table

Packing Box

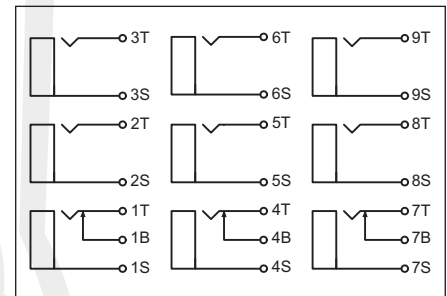
This document is protected by copyright law and international treaties. Reproduction except for personal use and distribution of this document will be prosecuted to the maximum extent possible under the law. Subject to changes without prior notice. Errors and omissions excepted. Copyright by NEXUS COMPONENTS GmbH

Series 43908 9x RCA Jack / Cinch Top Entry

43908B



Recommended P.C.B. Layout



Tolerances	
Linear	<6 ± 0.1
	6-20 ± 0.2
	>20 ± 0.3

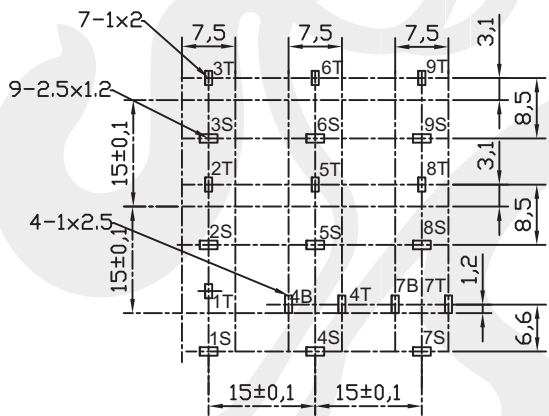
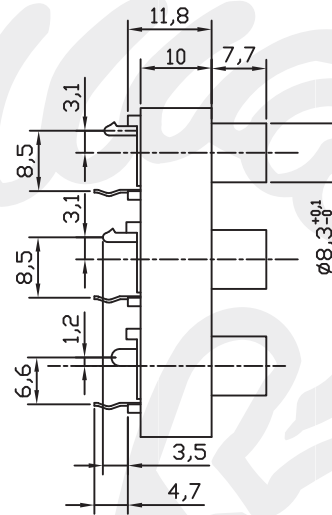
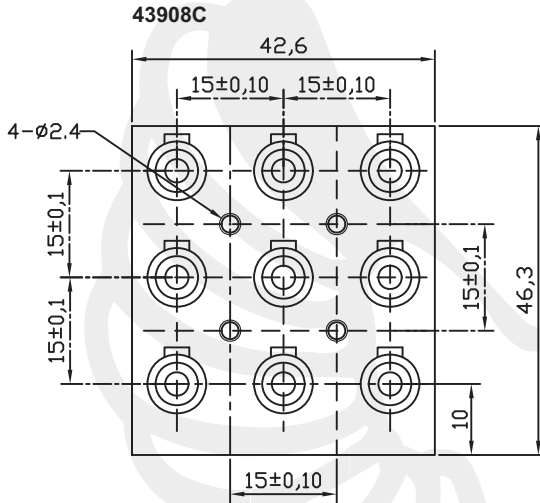


This document is protected by copyright law and international treaties. Reproduction except for personal use and distribution of this document will be prosecuted to the maximum extent possible under the law. Subject to changes without prior notice. Errors and omissions excepted. Copyright by NEXUS COMPONENTS GmbH

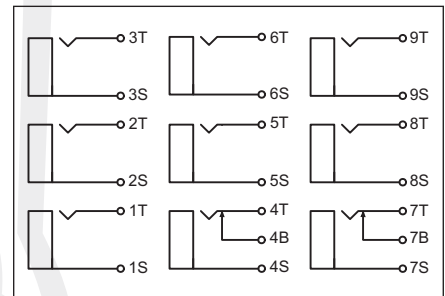
All dim. in mm

Series 43908 9x RCA Jack / Cinch Top Entry

43908C



Recommended P.C.B. Layout



Tolerances	
Linear	<6 ± 0.1
	6~20 ± 0.2
	>20 ± 0.3



This document is protected by copyright law and international treaties. Reproduction except for personal use and distribution of this document will be prosecuted to the maximum extent possible under the law. Subject to changes without prior notice. Errors and omissions excepted. Copyright by NEXUS COMPONENTS GmbH

All dim. in mm