

6588X Series Multiport RJ45 10P Side Entry Shielded

General specifications

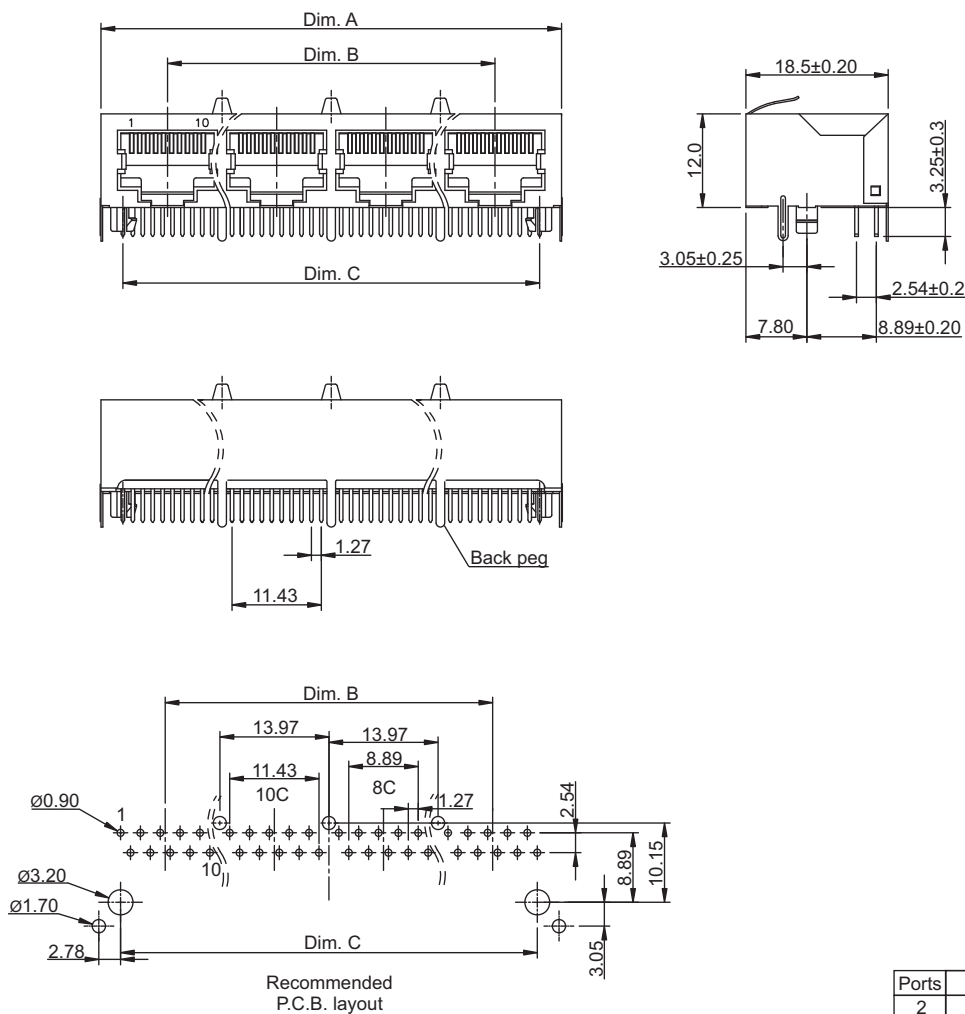
Insulator material	Polyester w/ glass fiber , UL94V-0, color: black
Contact material	Phosphor bronze
Current rating	1.5 A
Voltage rating	125 VAC
Contact resistance	45 mΩ max.
Insulator resistance	1000 MΩ min.
Dielectrical withstanding	1000 VAC for 1 min
Operating temperature	-40 °C to +85 °C
Soldering	Lead free wave soldering process
Durability	750 cycles

Mating parts series



Mechanical dimensions

Unit: mm



Ports	Dim. A	Dim. B	Dim. C
2	31.24	13.97	25.40
3	45.24	27.94	39.37
4	59.18	41.91	53.34
5	73.15	55.88	67.31
6	87.12	69.85	81.28
8	115.06	97.79	109.22

Tolerances		
Linear	X	± 0.25
	.XX	± 0.20
	.XXX	± 0.10

Part numbering guide

6588	B	C	8	0	0
Series	Ports	Contact plating	No. of contacts	Ground springs	Back peg
	B = 2 F = 6	C = 3 μ ^s gold	8 = 8	0 = w/o springs	0 = w/o peg
	C = 3 H = 8	D = 6 μ ^s gold	1 = 10	1 = w/ top springs	1 = w/ 1 peg
	D = 4	F = 15 μ ^s gold			3 = w/ 3 pegs
	E = 5	J = 30 μ ^s gold			

* standard

