

# 2300 Series

# 3.00 mm Micro MF SMT Header

## General specifications

Insulator material	Nylon 6T, UL94V-0, color: black
Contact material	Copper alloy
Current rating	5 A (with two pins 7 A max.)
Voltage rating	250 VAC
Contact resistance	10 mΩ max.
Insulator resistance	1000 MΩ min.
Dielectrical withstanding	1500 VAC for 1 min
Operation temperature	-40 °C to +105 °C
Soldering	JEDEC lead free reflow soldering process

## Mating parts series

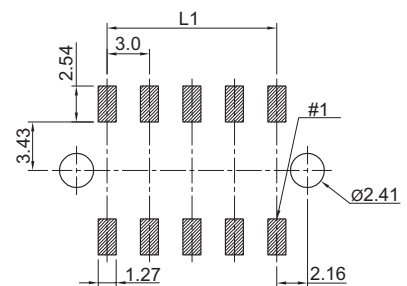
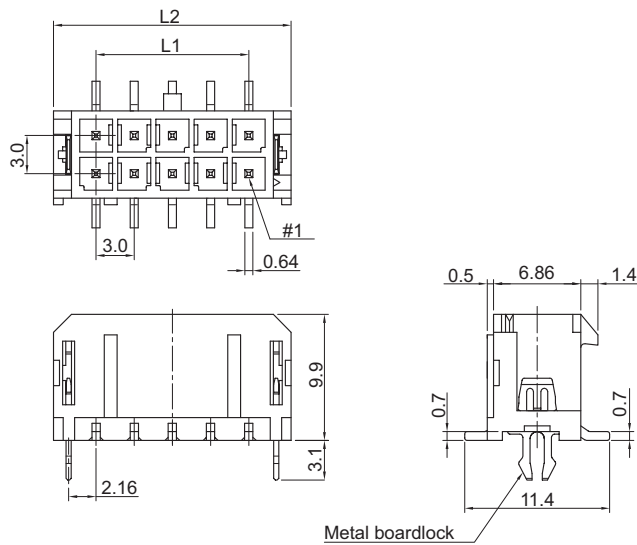
2300-P or cable assembly



## Mechanical dimensions

Unit: mm

### 2300V w/ metal boardlock

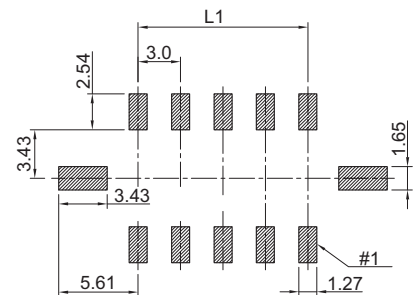
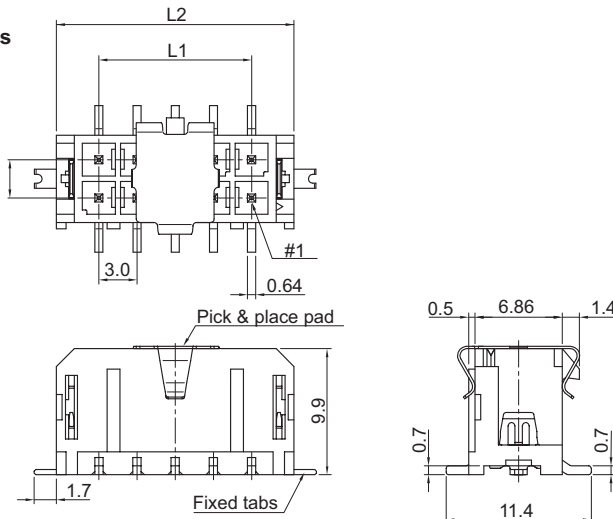


Recommended P.C.B. layout

$$L1 = \left( \frac{\text{No. of contacts}}{2} - 1 \right) \times 3.00$$

$$L2 = \left( \frac{\text{No. of contacts}}{2} \right) \times 3.00 + 3.70$$

### 2300V w/ fixed tabs



Recommended P.C.B. layout

Tolerances		
Linear	X	± 0.30
	.XX	± 0.20
	.XXX	± 0.10

continued on page 2

## Part numbering guide

**2300 V**

Series  
V = SMT vertical  
H = SMT horizontal

**02**

No. of contacts  
02 to 24

**B**

Contact plating  
B = Flashgold  
F = 15 μ" gold  
T = Tin

**0**

Mounting  
0 = w/ metal boardlock  
1 = w/ fixed tabs  
2 = w/ plastic boardlock

**R**

Packing  
R = Reel (only for fixed tabs)  
T = Tube

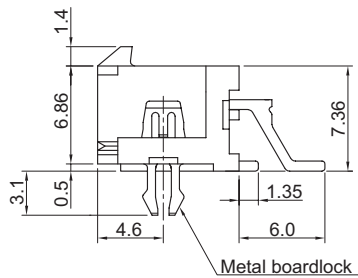
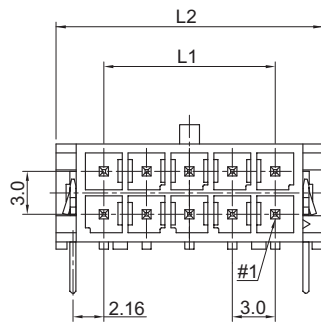
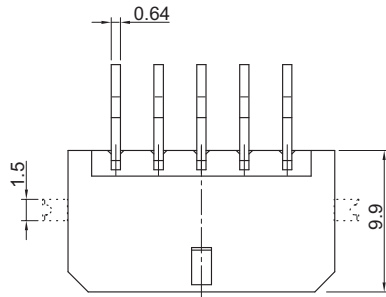
\* standard



## Mechanical dimensions

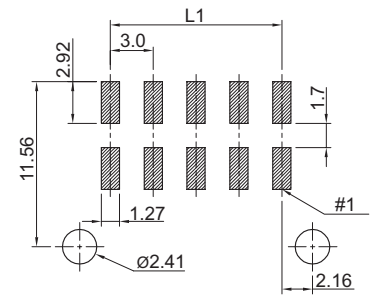
Unit: mm

### 2300H w/ metal boardlock



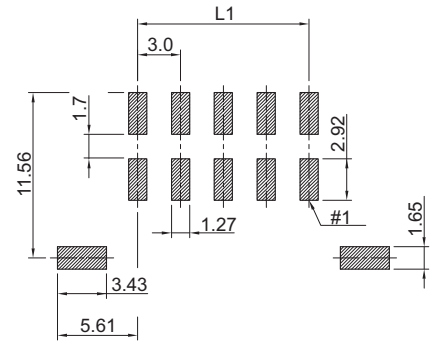
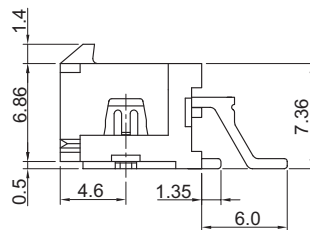
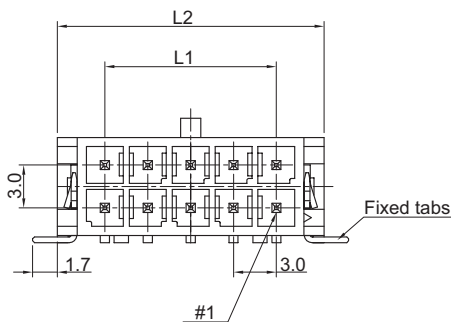
$$L1 = \left( \frac{\text{No. of contacts}}{2} - 1 \right) \times 3.00$$

$$L2 = \left( \frac{\text{No. of contacts}}{2} \right) \times 3.00 + 3.70$$



Recommended P.C.B. layout

### 2300H w/ fixed tabs



Recommended P.C.B. layout

Tolerances	
Linear	X ± 0.30
	.XX ± 0.20
	.XXX ± 0.10

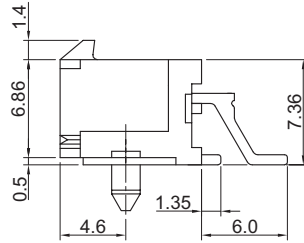
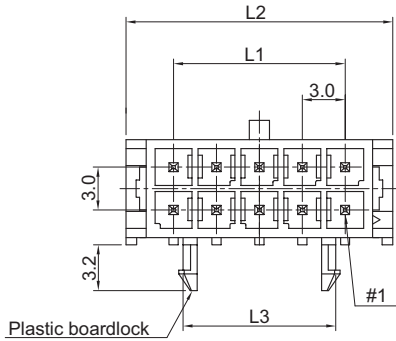
continued on page 3



## Mechanical dimensions

Unit: mm

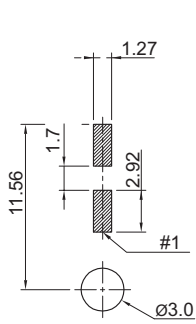
### 2300H w/ plastic boardlock



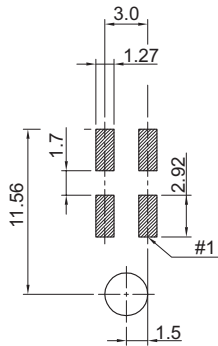
$$L1 = \left( \frac{\text{No. of contacts}}{2} - 1 \right) \times 3.00$$

$$L2 = \left( \frac{\text{No. of contacts}}{2} \right) \times 3.00 + 3.70$$

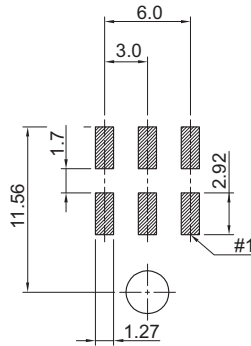
$$L3 = L1 - 1.30$$



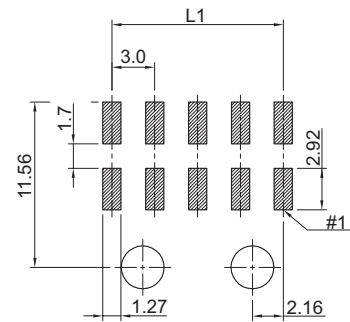
2 contacts



4 contacts



6 contacts



8 to 24 contacts

Recommended P.C.B. layout

Tolerances	
Linear	X ± 0.30
	.XX ± 0.20
	.XXX ± 0.10

