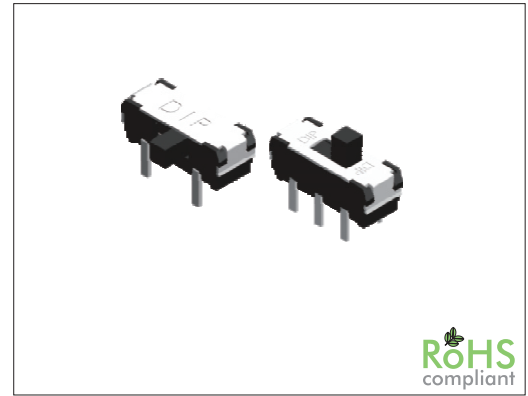


SW-LSS Series THT Slide Switch

General specifications

Housing material	High temperature thermoplastic, UL94V-0, color: black
Actuator material	High temperature thermoplastic, UL94V-0, color: black
Contact material	Copper alloy
Current rating	0.1 A
Voltage rating	12 VDC
Contact resistance	60 mΩ max.
Insulator resistance	100 MΩ min. @ 500 VDC
Dielectrical withstanding	500 VAC for 1 min
Operating temperature	-10 °C to +60 °C
Operating force	200 ± 150 gf
Durability	10000 cycles
Soldering	Lead free wave soldering process

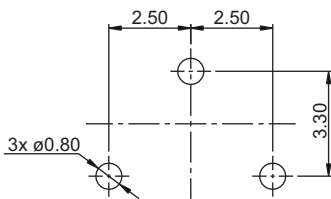
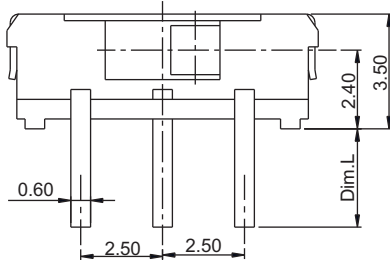
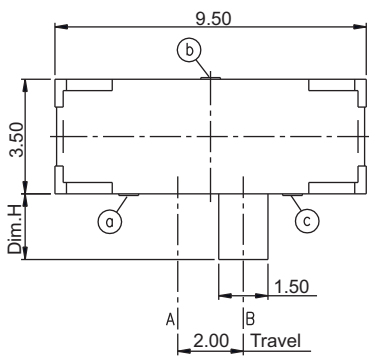


Mechanical dimensions

Unit: mm

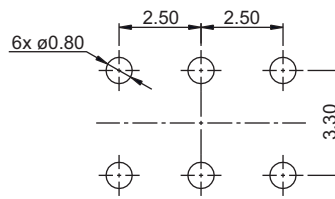
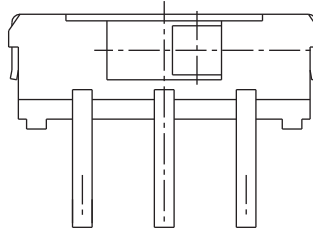
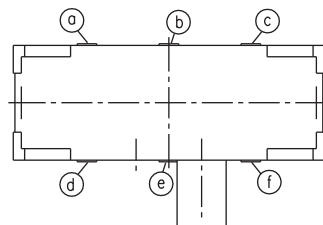
SW-LSS

1P2T



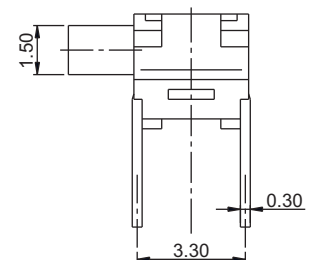
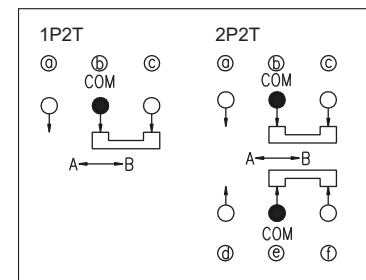
Recommended P.C.B. layout for SW-LSS 1P2T

2P2T



Recommended P.C.B. layout for SW-LSS 2P2T

Circuit



Ordercode dimensions	
Index	Dim. L
none	3.00
L	2.50
M	2.20
N	1.80
Q	1.50
R	1.20
P	1.00
S	0.90

continued on page 2

Tolerances	
Linear	± 0.20

Part numbering guide

SW-LSS

12

□

□

□

V

TR

Series
SW-LSS = THT right angle
SW-LSSA = THT straight

Poles and positions
12 = 1 pole, 2 positions (1P2T)
22 = 2 poles, 2 positions (2P2T)

Dim. L
see table

Dim. H
32 = 3.20 mm
40 = 4.00 mm
(only for SW-LSS,
leave blank for 2.00 mm)

Stem direction
C = Left
(leave blank for
direction right)

Material
V = Lead free
Q = Halogen free

Packing
TR = Reel
(leave blank for
pe bag)

* standard



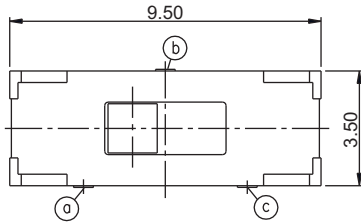
SW-LSS Series THT Slide Switch

Mechanical dimensions

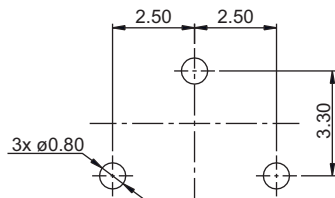
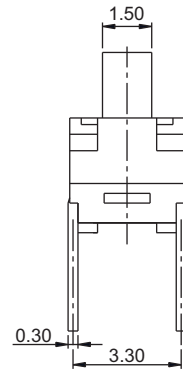
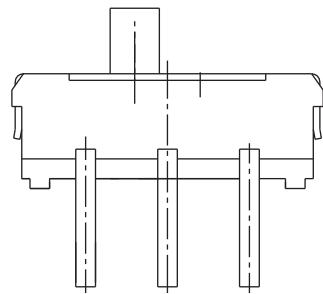
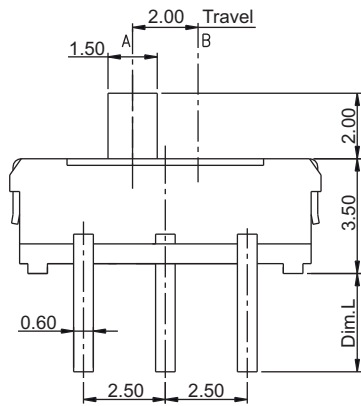
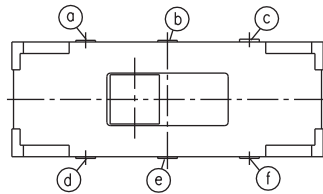
Unit: mm

SW-LSSA

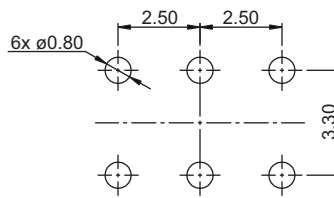
1P2T



2P2T



Recommended P.C.B. layout for SW-LSSA 1P2T



Recommended P.C.B. layout for SW-LSSA 2P2T

Tolerances	
Linear	± 0.20

