

3664 Series

Display Port 20 pin Top Flange DIP 3-Row

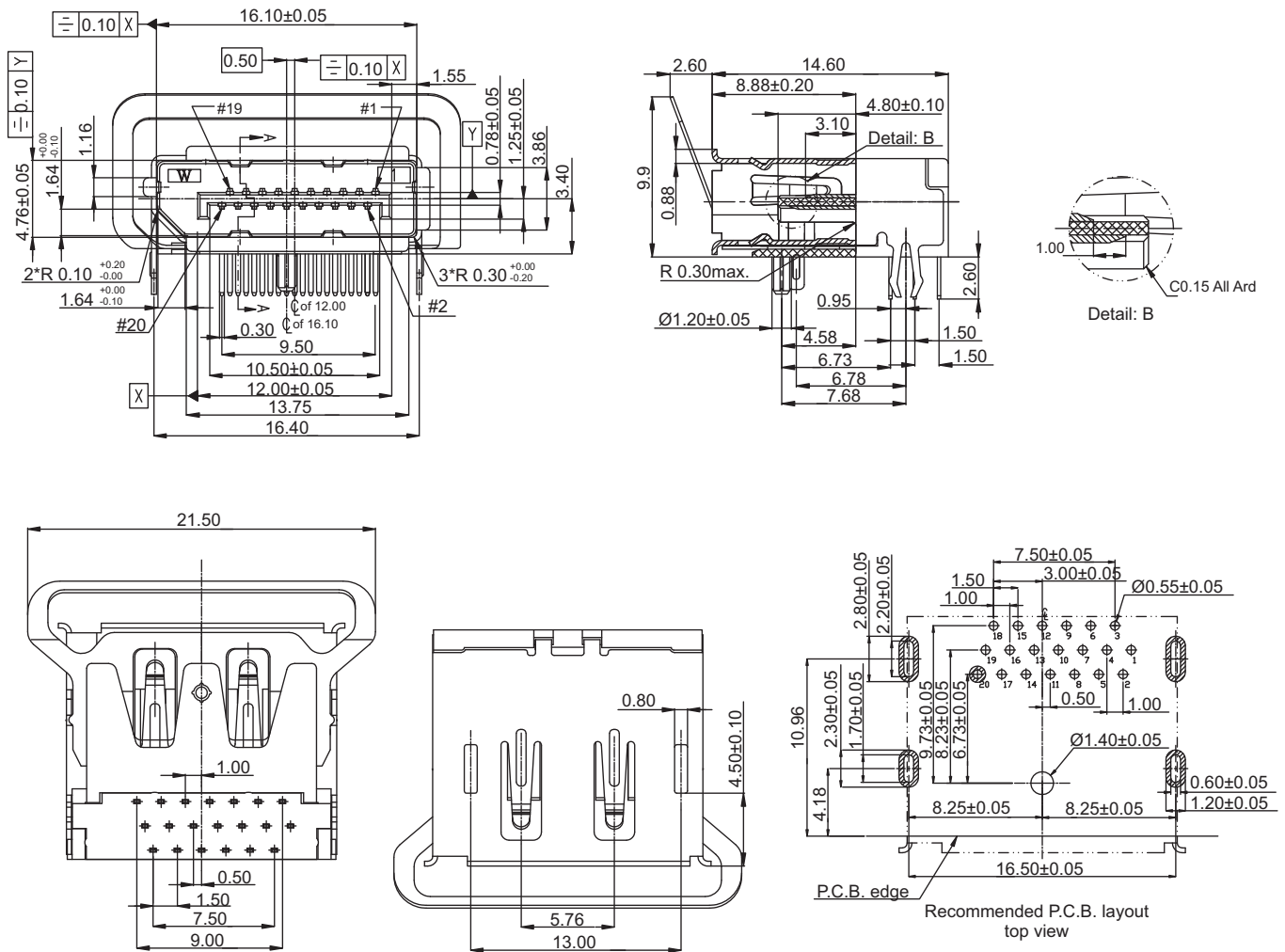
General specifications

Insulator material	LCP, UL94V-0, color: black
Contact material	Brass, plating: gold over nickel
Shell material	Brass
Current rating	0.5 A
Voltage rating	40 VAC max.
Contact resistance	30 mΩ max.
Insulator resistance	100 MΩ min.
Dielectrical withstanding	500 VAC for 1 min
Operating temperature	-20 °C to +85 °C
Mating parts series	



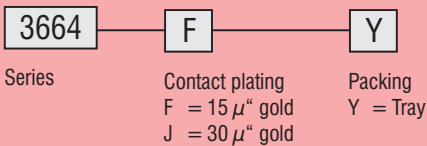
Mechanical dimensions

Unit: mm



Tolerances		
Linear	X	± 0.38
	XX	± 0.25
	XXX	± 0.20

Part numbering guide



* standard

