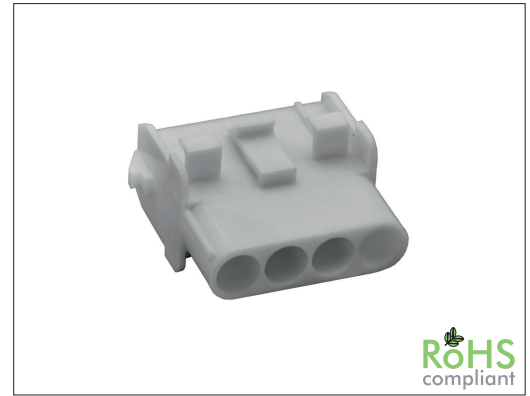


2635 Series

6.35 mm Housing for Male / Female Terminal

General specifications

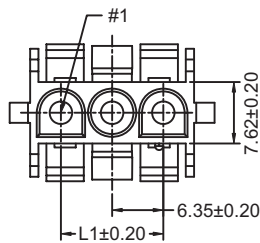
Insulator material	Nylon 66
Contact material	Brass, plating: tin
Current rating	15 A
Voltage rating	600 V AC/DC
Contact resistance	3.5 mΩ max.
Insulator resistance	1000 MΩ min.
Dielectrical withstanding	2900 VAC for 1 min
Operating temperature	-25 °C to +85 °C
Mating parts series	
2635P	



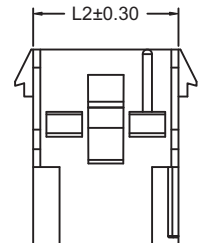
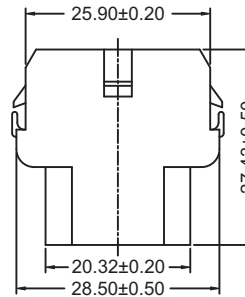
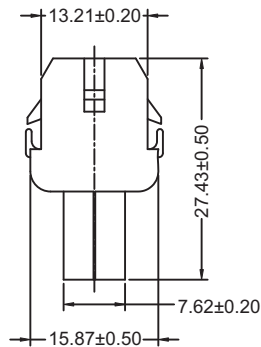
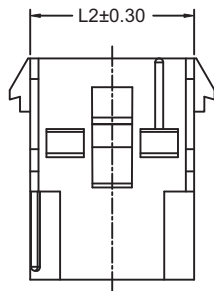
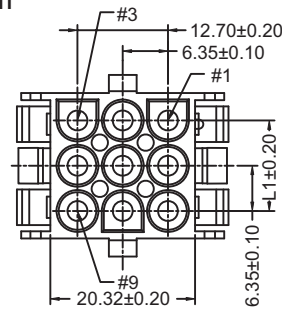
Mechanical dimensions

Unit: mm

2635MS



2635MT



L1 = No. of contacts x 6.35 - 6.35
L2 = L1 + 7.62

L1 = No. of contacts / 3 x 6.35 - 6.35
L2 = L1 + 7.70

For terminal see 2635T / 2635Z

Tolerances

Linear	X	± 0.25
	.XX	± 0.15
	.XXX	± 0.05

Part numbering guide

2635 MS

02

V

Series
MS = Housing single row
MT = Housing tripple row

No. of contacts
1-row = 02 to 06, 08
3-row = 06, 09, 12, 15

Material
V = UL94V-0, color: white *
W = UL94V-2, color: natural

* standard

