

# 3102 Series D-Sub C7W2 Housing

## General specifications

Insulator material	Glass filled polyester, UL94V-0
Contact material	Brass
Shell material	Steel, plating: tin
Signal contact rating	3 A
Contact resistance	10 mΩ max.
Insulator resistance	5000 MΩ min.
Dielectrical withstanding	1000 VAC for 1 min
Operating temperature	-55 °C to +125 °C
Durability	100 cycles

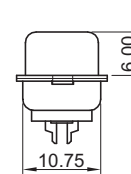
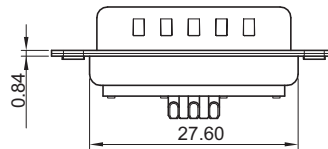
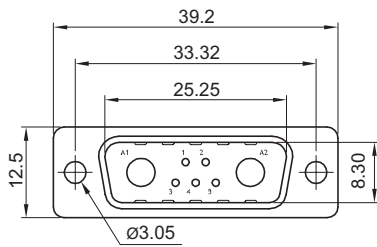
## Mating parts series



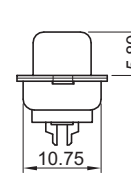
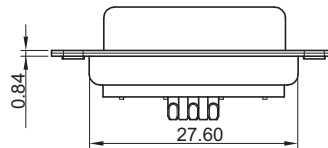
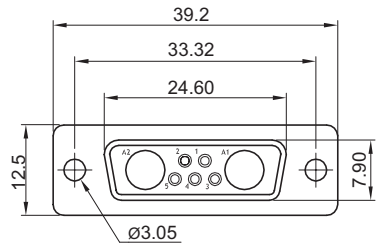
## Mechanical dimensions

Unit: mm

### 3102M



### 3102F



Applicable contact series	
High power	3117, 3118
Coaxial	3119

Tolerances		
Linear	X	± 0.30
	XX	± 0.20
	XXX	± 0.10

Type 0 (w/ Ø3.05 holes)	Type A (w/ riveted front bolts)	Type B (w/ riveted front bolts)	Type C (w/ riveted rear bolts)

## Part numbering guide

**3102 F** — **B** — **0**

Series

F = Female  
M = Male

Signal contact plating

B = Flashgold  
F = 15μ" gold  
J = 30μ" gold

Mounting type

0 = w/o screws  
A = w/ riveted front bolts 5.8 mm  
B = w/ riveted front bolts 4.0 mm  
C = w/ riveted rear bolts 4.0 mm

\* standard

