

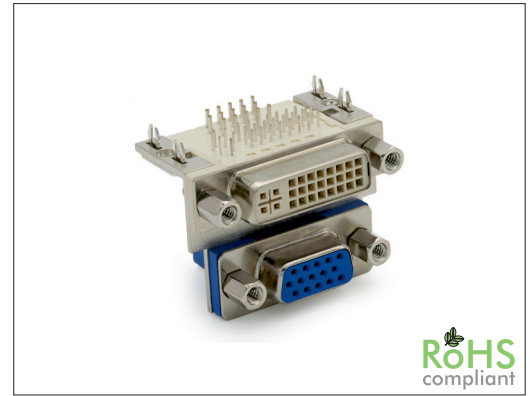
3697 Series

Dual Socket DVI 29 and HD D-Sub 15

General specifications

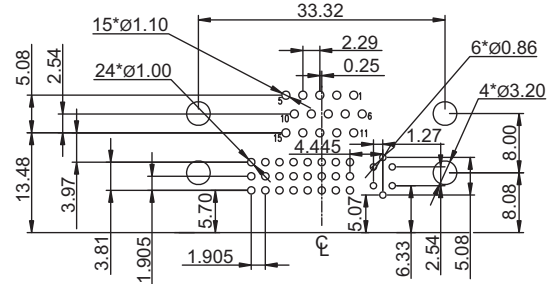
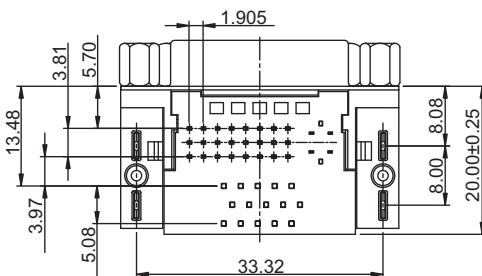
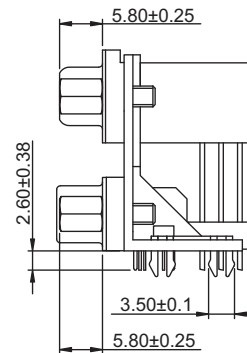
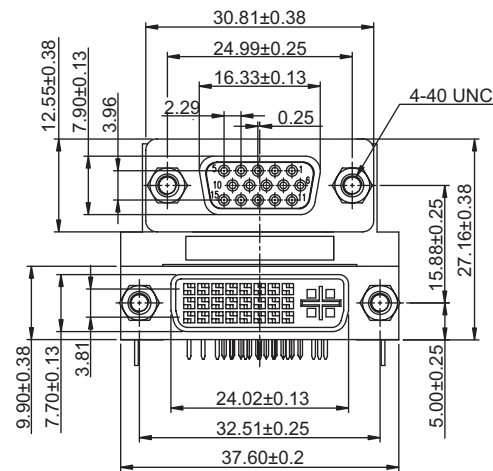
Insulator material	PBT, UL94V-0
Contact material	Copper alloy
Shell material	SPCC, plating: nickel
Current rating	VGA: 3 A, DVI: 1.5 A
Contact resistance	VGA: 25 mΩ max., DVI: 20 mΩ max.
Insulator resistance	VGA: 5000 MΩ min., DVI: 1000 MΩ min.
Dielectrical withstanding	VGA: 1000 VAC for 1 min, DVI: 500 VAC for 1 min
Operating temperature	-55 °C to +85 °C
Soldering	Lead free wave soldering process

Mating parts series



Mechanical dimensions

Unit: mm



Recommended P.C.B. layout

Tolerances	
Linear	.XX ± 0.25
	.XXX ± 0.13

Part numbering guide

3697 F ————— **B**

Series
F = DVI female 29 pin,
HD D-Sub female 15 pin

Contact plating
B = Flashgold

* standard

