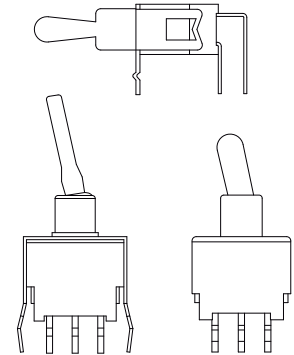


SW-ES30T Series Sub-Miniature Toggle Switches, washable

| Specifications | |
|---------------------------|---|
| Contact rating | 0.4 VA max. @ 48 V AC / DC |
| Durability | 50000 cycles at full load |
| Contact resistance | 50 mΩ max. initial @ 3 VDC, 100 mA |
| Insulator resistance | 500 MΩ min. |
| Dielectrical withstanding | 500 VAC |
| Operation temperature | -30 °C to +85 °C |
| Materials | |
| Case | Glass filled nylon 4/6, UL94V-0 |
| Actuator | Copper alloy, plating: chrome |
| Housing and bushing | Stainless steel |
| Contact and terminal | Phosphor bronze, plating: see order code |
| Terminal | Phosphor bronze, plating: tin over nickel |
| Terminal seal | Epoxy |

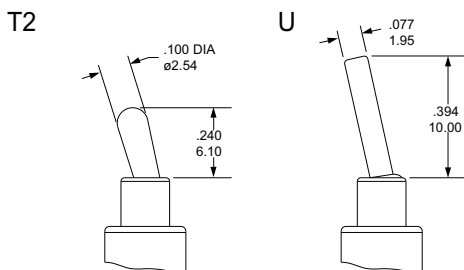


Part numbering guide

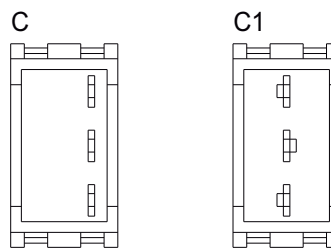
S **W** - **E** **T** - **4** - **T** **2** **C** **K** - **A** **5** **S** - **T** **4** - **3** - **H**

| Switches Function | | | Actuator | Contact Plating | Toggle Cap | RoHS Code |
|-------------------|---------------------|----------------|---------------------------------------|--|----------------|--------------------|
| washable | Non-washable | | T2 6.10 U flat 10.00 | K gold / tin (std.) R gold plated | T4 6.60 | H = RoHS Compliant |
| ET-4 | ETN-4 | SP on-none-on | Termination | Vertical Support Bracket | Color | |
| ET-4A | ETN-4A | SP on-off-on | | | | |
| ET-4I | ETN-4I | SP on-off-(on) | C straight | (none) | 1 white | |
| ET-5 | ETN-5 | DP on-none-on | C1 straight | A5S Vertical bracket | 2 black | |
| ET-5A | ETN-5A | DP on-off-on | H horizon. | | 3 red | |
| ET-5I | ETN-5I | DP on-off-(on) | V vertical | | | |

Actuator option

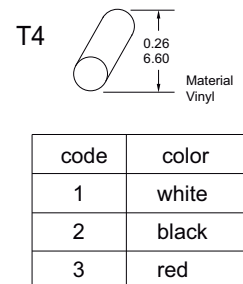


Terminal option



The bottom view of switch

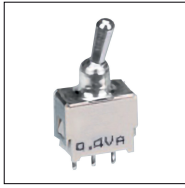
Toggle cap option



continued on page 2



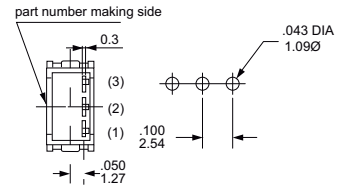
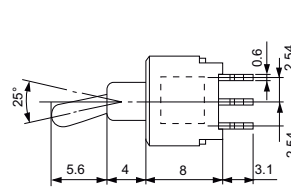
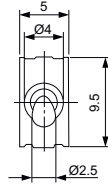
SW-ES30T Series Sub-Miniature Toggle Switches, washable



SPDT

 2 Comm
 1 3

| Model No. | Switching position | | |
|-------------|--------------------|------|------|
| | | | |
| ET-4 | ON | none | ON |
| ET-4A | ON | OFF | ON |
| ET-4I | ON | OFF | (ON) |
| Term. Comm. | 2-3 | open | 2-1 |



SW-ET-4-T2CK

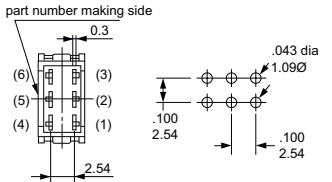
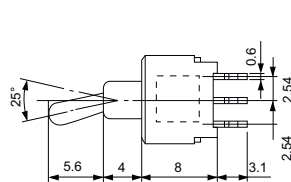
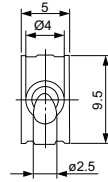
Recommended P.C.B. layout



DPDT

 2 Comm
 1 3 4 6

| Model No. | Switching position | | |
|-------------|--------------------|------|---------|
| | | | |
| ET-5 | ON | none | ON |
| ET-5A | ON | OFF | ON |
| ET-5I | ON | OFF | (ON) |
| Term. Comm. | 2-3,5-6 | open | 2-1,5-4 |



SW-ET-5-T2CK

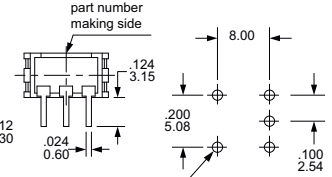
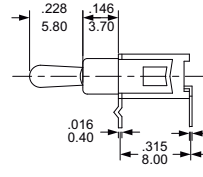
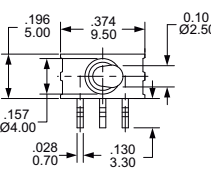
Recommended P.C.B. layout



SPDT

 2 Comm
 1 3

| Model No. | Switching position | | |
|-------------|--------------------|------|------|
| | | | |
| ET-4 | ON | none | ON |
| ET-4A | ON | OFF | ON |
| ET-4I | ON | OFF | (ON) |
| Term. Comm. | 2-3 | open | 2-1 |



SW-ET-4-T2HK

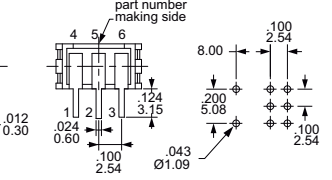
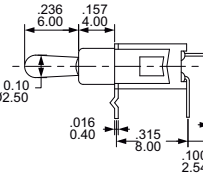
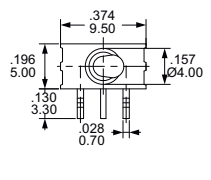
Recommended P.C.B. layout



DPDT

 2 Comm
 1 3 4 6

| Model No. | Switching position | | |
|-------------|--------------------|------|---------|
| | | | |
| ET-5 | ON | none | ON |
| ET-5A | ON | OFF | ON |
| ET-5I | ON | OFF | (ON) |
| Term. Comm. | 2-3,5-6 | open | 2-1,5-4 |



SW-ET-5-T2HK

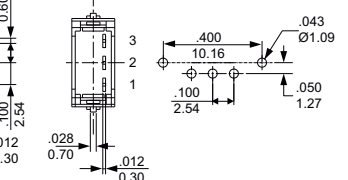
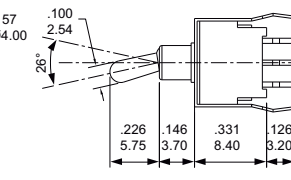
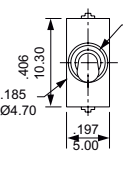
Recommended P.C.B. layout



SPDT

 2 Comm
 1 3

| Model No. | Switching position | | |
|-------------|--------------------|------|------|
| | | | |
| ET-4 | ON | none | ON |
| ET-4A | ON | OFF | ON |
| ET-4I | ON | OFF | (ON) |
| Term. Comm. | 2-3 | open | 2-1 |



SW-ET-4-T2CK-A5S

Recommended P.C.B. layout

