

# 2125 Series

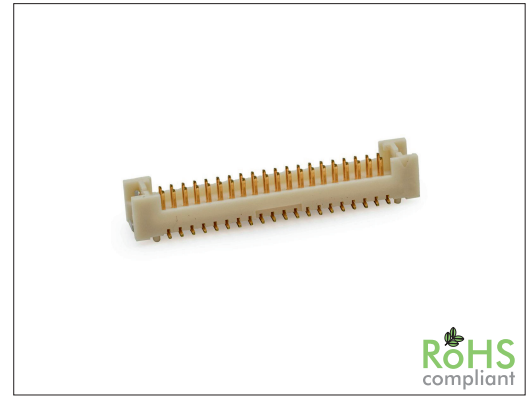
# 1.25 mm MDD SMT Pin Header Dual Row

## General specifications

Insulator material	Nylon 9T, UL94V-0, color: natural
Contact material	Brass
Current rating	1 A
Voltage rating	150 V AC/DC
Contact resistance	30 mΩ max.
Insulator resistance	500 MΩ min.
Dielectrical withstanding	500 VAC for 1 min
Operating temperature	-35 °C to +85 °C
Soldering	JEDEC lead free reflow soldering process

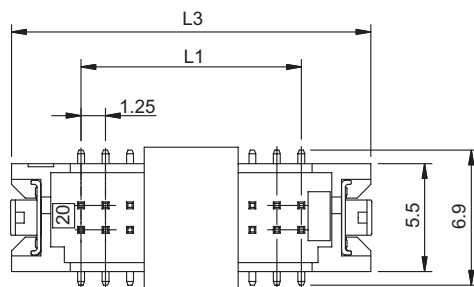
## Mating parts series

2125-PT or cable assembly



## Mechanical dimensions

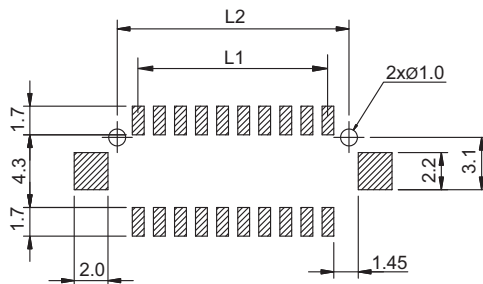
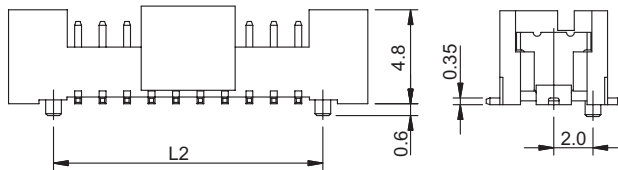
Unit: mm



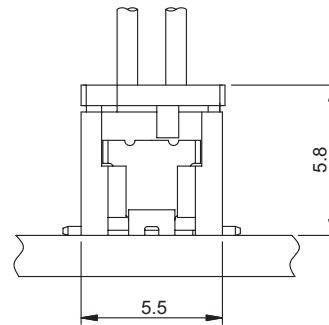
$$L1 = \text{No. of contacts} / 2 \times 1.25 - 1.25$$

$$L2 = L1 + 2.50$$

$$L3 = L1 + 7.10$$



Recommended  
P.C.B. layout



### Tolerances

Linear	X	± 0.25
	.XX	± 0.12
	.XXX	± 0.08

## Part numbering guide



Series  
V = SMT vertical

No. of contacts  
10, 20, 30, 40, 50

Contact plating  
T = Tin  
B = Flashgold

Packing  
R = Reel  
T = Tube

\* standard

