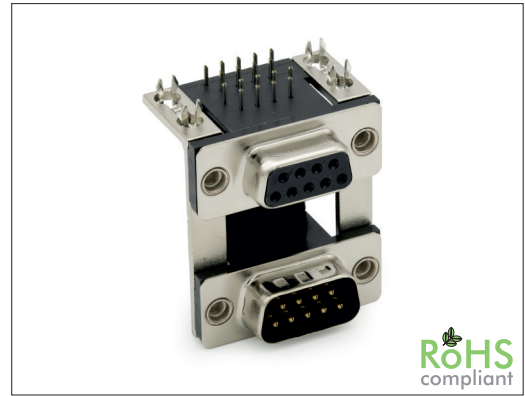


3071 Series

Dual D-Sub Female / Male



General specifications

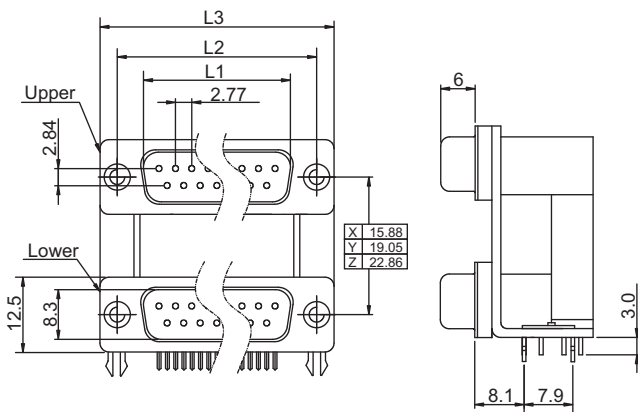
Insulator material	PBT + 30% glass fiber, UL94V-0, color: black
Contact material	Brass, plating: gold, metal shell: steel
Current rating	5 A
Contact resistance	25 mΩ max.
Insulator resistance	5000 MΩ min.
Dielectrical withstanding	500 VAC for 1 min
Operating temperature	-55 °C to +105 °C
Soldering	JEDEC lead free wave soldering process

Mating parts series

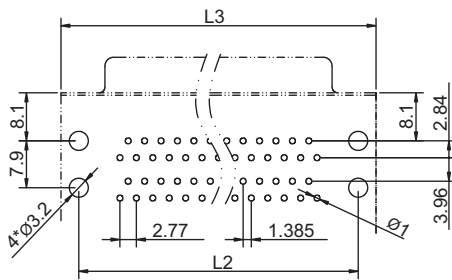
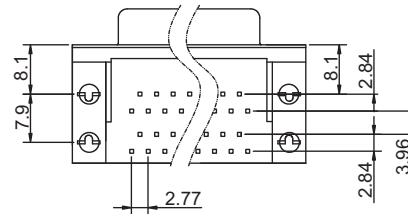
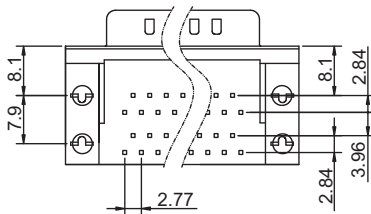
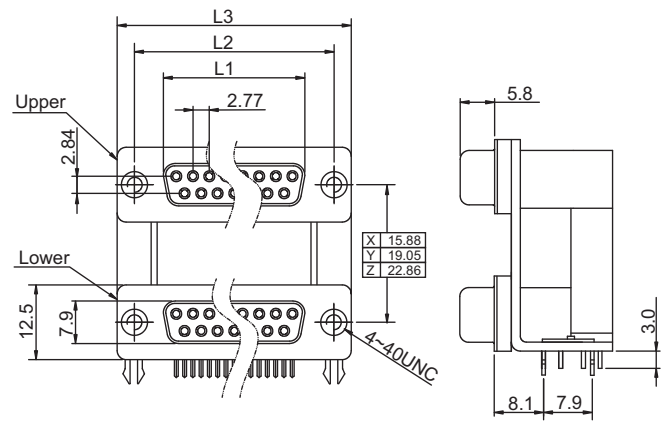
Mechanical dimensions

Unit: mm

Male / male



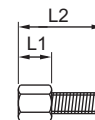
Female / female



Recommended P.C.B. Layout

Ordercode for screws UNC4-40 only

Ordercode	L1	L2
3099U1	4.8	11.8
3099U9	5.8	12.0



Female

Contacts	L1	L2	L3
09	16.30	25.00	30.80
15	24.60	33.30	39.20
25	38.30	47.10	53.10
37	54.80	63.50	69.40

Male

Contacts	L1	L2	L3
09	16.92	25.00	30.80
15	25.25	33.30	39.20
25	38.96	47.10	53.10
37	55.42	63.50	69.40

Tolerances		
Linear	X	± 0.25
	.XX	± 0.15

Part numbering guide

3071 A	01	B	X
Series (top / bottom) A = Male / male B = Male / female C = Female / male D = Female / female	No. of contacts (top / bottom) 01 = 09 / 09 05 = 09 / 25 02 = 15 / 15 06 = 25 / 09 03 = 25 / 25 07 = 09 / 37 04 = 37 / 37 08 = 37 / 09	Contact plating B = Flashgold* E = 10μ* gold F = 15μ* gold J = 30μ* gold	Socket spacing X = 15.88 mm Y = 19.05 mm Z = 22.86 mm

* standard

