

# 2424 Series

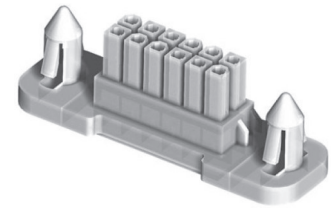
# 4.20 mm MF Female Contact Housing Panel Mount

### General specifications

Insulator material	Glass filled polyester
Current rating	8 A (for 2 pins 9 A, for 8 to 10 pins 7 A)
Voltage rating	600 V AC/DC
Insulator resistance	1000 MΩ min.
Dielectrical withstanding	1500 VAC for 1 min
Operating temperature	UL94V-0: -40 °C to +105 °C, UL94V-2: -25 °C to +85 °C

### Mating parts series

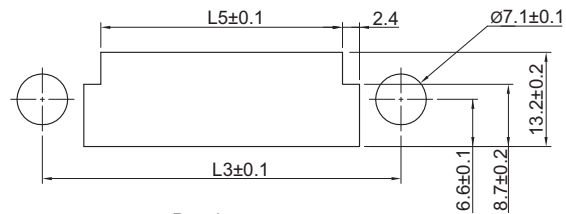
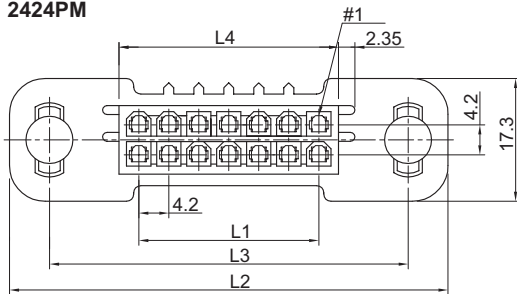
2424-M, 2424-R, 2424-S, 2424-SD-RD or cable assembly



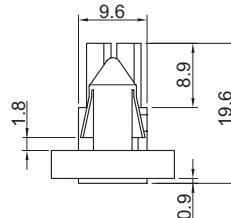
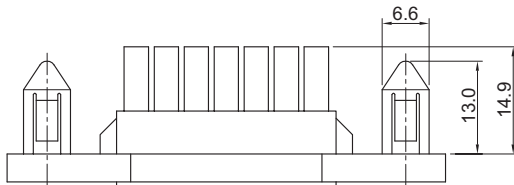
### Mechanical dimensions

Unit: mm

2424PM



Panel cutout  
Panel thickness = 1.6±0.05



Contacts	L1	L2	L3	L4	L5
4	4.20	40.40	29.20	9.70	12.80
6	8.40	44.60	33.40	13.90	17.00
10	16.80	53.00	41.80	22.30	25.40
14	25.20	61.40	50.20	30.70	33.80
18	33.60	69.80	58.60	39.10	42.20
24	46.20	82.40	71.20	51.70	54.80

Applicable terminal series 2424T

#### Tolerances

Linear	X	± 0.38
	.XX	± 0.25

### Part numbering guide

2424 PM

04

Series  
PM = Panel mount

No. of contacts  
04, 06, 08, 10  
14, 18, 24

Material option  
V2 = UL94V-2, color: nature  
leave blank for UL94V-0, color: white

\* standard

