

# 1290 Series

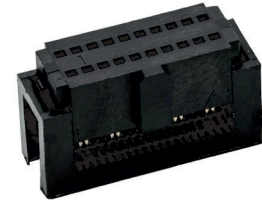
# 1.27 x 2.54 mm IDC Female Flatcable Header

## General specifications

Insulator material	PBT, UL94V-0, color: black
Contact material	Copper alloy
Current rating	1 A
Contact resistance	30 mΩ max.
Insulator resistance	500 MΩ min.
Dielectrical withstanding	250 VAC for 1 min
Operating temperature	-40 °C to +105 °C

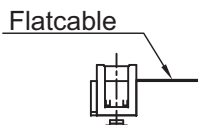
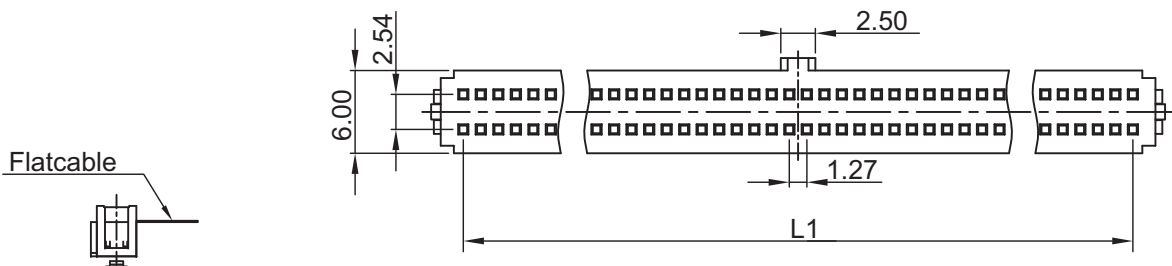
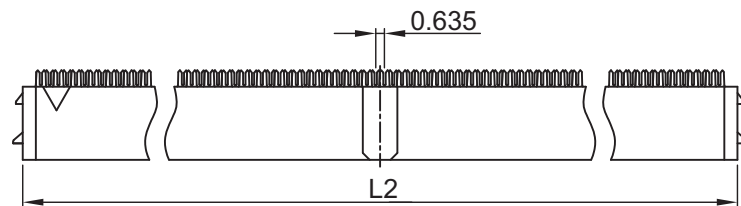
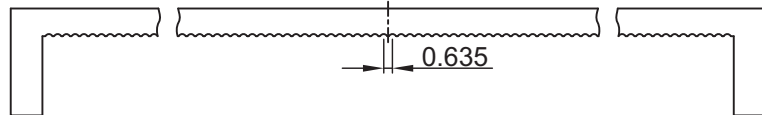
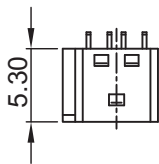
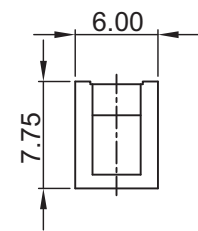
## Mating parts series

1220, 1226, 1228, 1270, 1276



## Mechanical dimensions

Unit: mm



$$L1 = \left( \frac{\text{No. of contacts}}{2} - 1 \right) \times 1.27$$

$$L2 = \left( \frac{\text{No. of contacts}}{2} \right) \times 1.27 + 2.00$$

### Tolerances

Linear	X	± 0.38
	.XX	± 0.25

## Part numbering guide

1290 I — 10 — M

Series  
I = IDC female

No. of contacts  
10, 14, 16, 20,  
22, 26, 30, 34,  
40, 44, 50, 60,  
68, 80, 100

Contact plating  
B = Flashgold  
E = 10 μm gold  
F = 15 μm gold  
J = 30 μm gold

M = Tin/Flashgold\*

\* standard

