

# 2205 Series

# 2.00 mm SMT Pin Header w/ Lock

### General specifications

Insulator material	PA9T, UL94V-0, color: natural
Contact material	Brass
Current rating	2 A
Voltage rating	100 V AC/DC
Contact resistance	10 mΩ max.
Insulator resistance	1000 MΩ min.
Dielectrical withstanding	800 VAC for 1 min
Operating temperature	-25 °C to +85 °C
Soldering	JEDEC lead free reflow soldering process

### Mating parts series

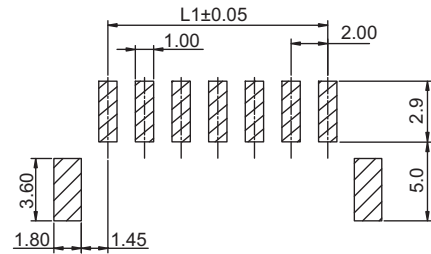
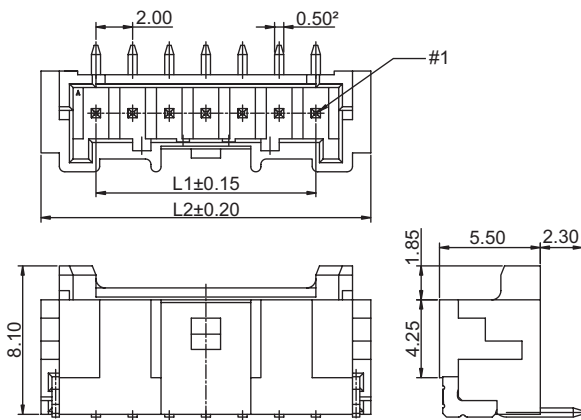
2205-PT or cable assembly



### Mechanical dimensions

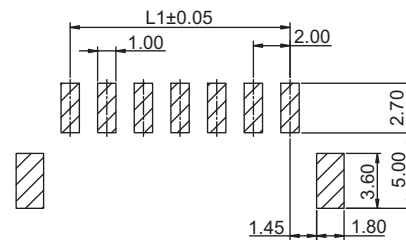
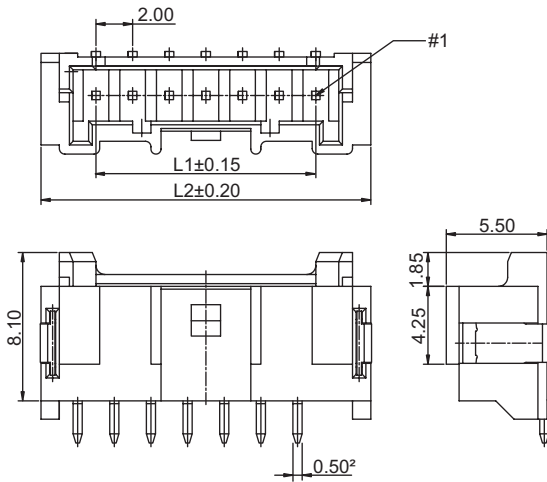
Unit: mm

#### 2205V



Recommended P.C.B. layout

#### 2205H



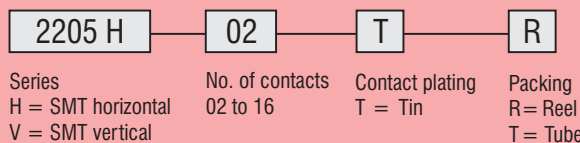
Recommended P.C.B. layout

L1 = No. of contacts x 2.00 - 2.00  
L2 = No. of contacts x 2.00 + 4.00

#### Tolerances

Linear	X	± 0.25
	.XX	± 0.12
	.XXX	± 0.08

### Part numbering guide



\* standard

