

1479 Series

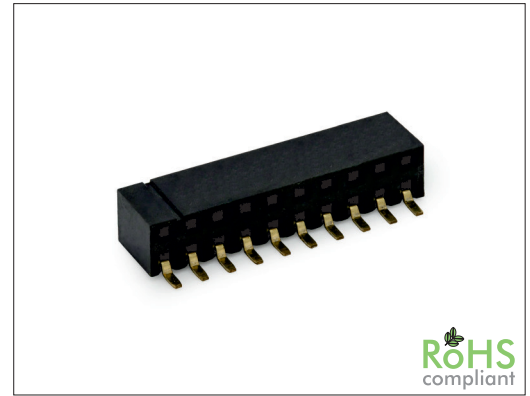
2.00 mm SMT Female Header Dual Row Side Entry

General specifications

Insulator material	Nylon-6T, UL94V-0, color: black
Contact material	Phosphor bronze
Current rating	1 A
Voltage rating	250 VAC
Contact resistance	20 mΩ max.
Insulator resistance	3000 MΩ min.
Dielectrical withstanding	500 VAC for 1 min
Operating temperature	-40 °C to +105 °C
Soldering	JEDEC lead free reflow soldering process

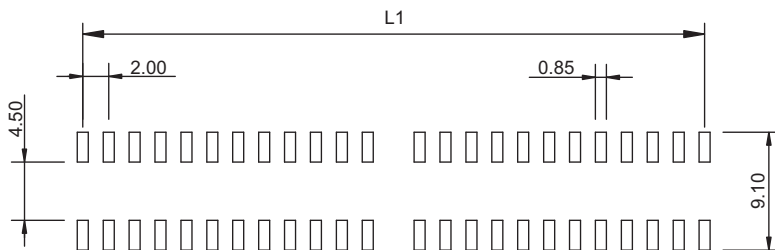
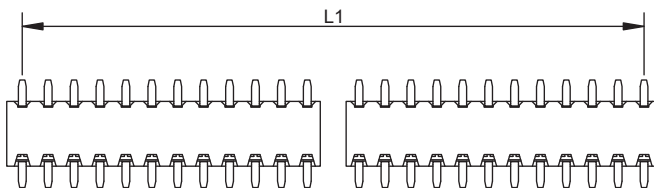
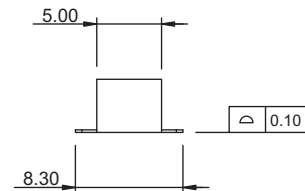
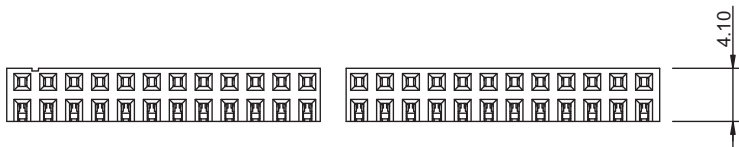
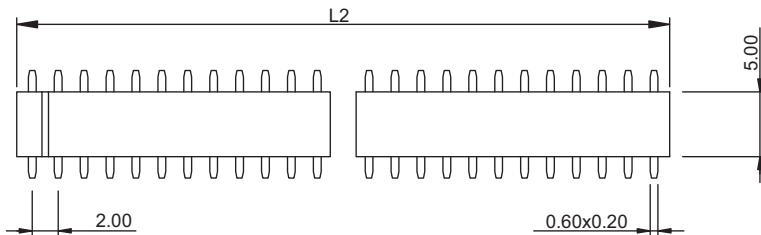
Mating parts series

1320, 1334, 1420, 1422, 1425, 1434, 1435



Mechanical dimensions

Unit: mm



Recommended P.C.B. layout

$$L1 = \left(\frac{\text{No. of contacts}}{2} - 1 \right) \times 2.00$$

$$L2 = \left(\frac{\text{No. of contacts}}{2} \right) \times 2.00 + 0.40$$

Tolerances		
Linear	X	± 0.30
	.XX	± 0.20
	.XXX	± 0.10

Part numbering guide

1479 H — 04 — B — R

Series	No. of contacts	Contact plating	Packing
H = SMT horizontal	04 to 80	B = Flashgold E = 10 μm gold F = 15 μm gold J = 30 μm gold	R = Reel T = Tube

* standard

