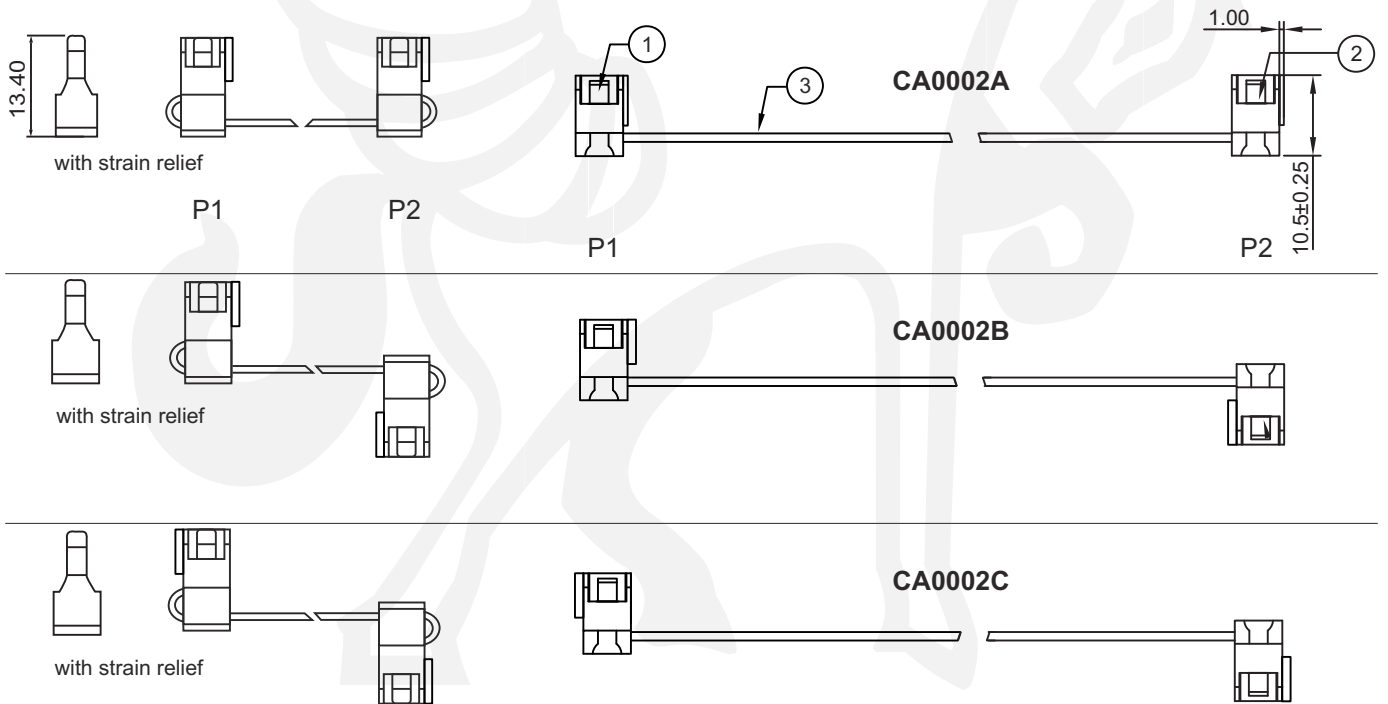
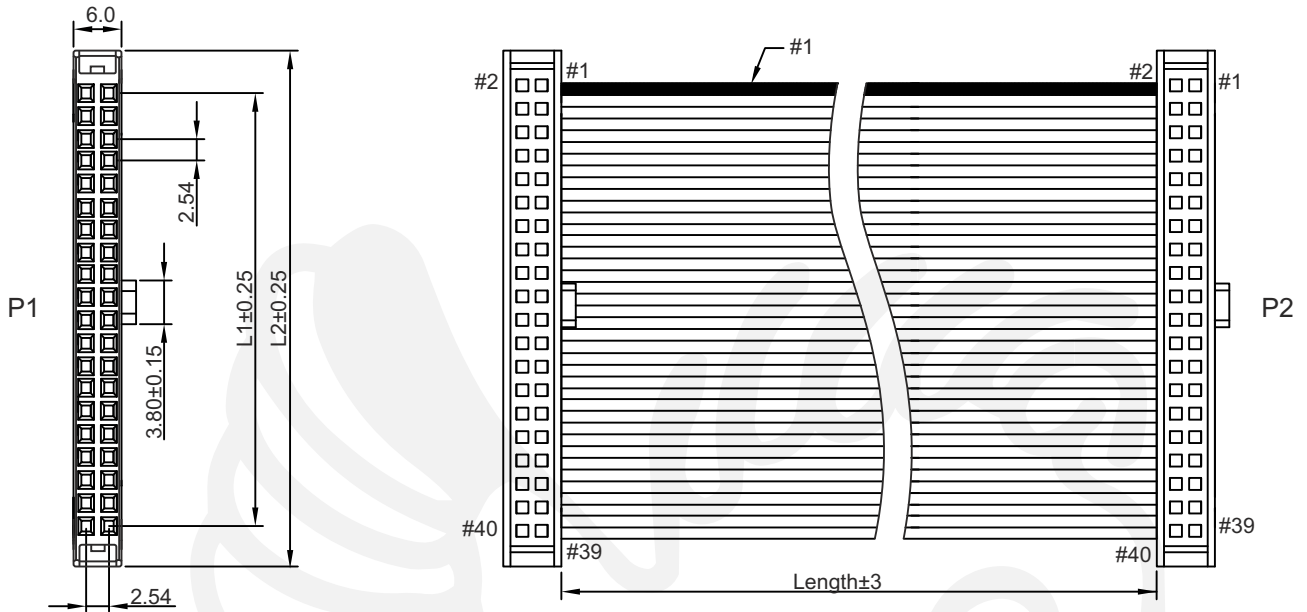


Series CA0002 Flatcable with 2x 2.54mm IDC Female Header

Item	Description	Qty
1	2.54mm IDC Female Flatcable Header, xxPin, NEXUS 1690, flashgold	1
2	2.54mm IDC Female Flatcable Header, xxPin, NEXUS 1690, flashgold	1
3	Flatcable, UL2651 AWG #28 PH=1.27, Length xxx	1



Tolerances	
Linear	X. ± 0.30
	.X ± 0.25
	.XX ± 0.20



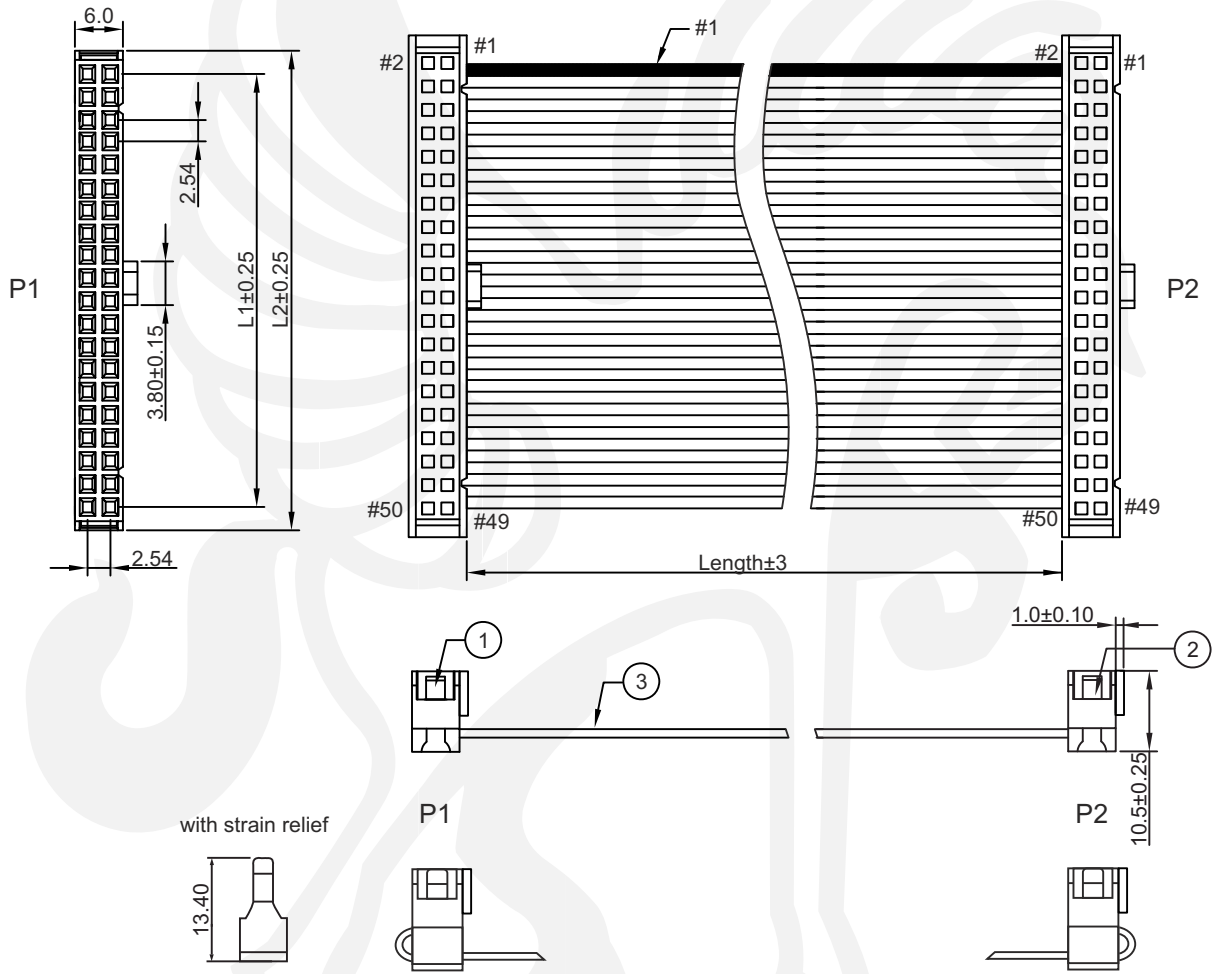
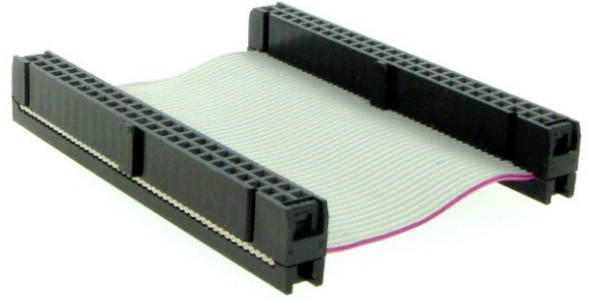
All dim. in mm

CA0002	A	BB	50	050
Type	A = Type A	Header Type P1, P2	No. of contacts	Length L
	B = Type B	A = with bar & strain relief	06 ~ 64	i.e. 050 = 50mm
	C = Type C	B = with bar, w/o strain relief		
		C = w/o bar, with strain relief		
		D = w/o bar & strain relief		

Series CA0002

Flatcable with 2x 2.54mm IDC Female Header Type A

Item	Description	Qty
1	2.54mm IDC Female Flatcable Header, xxPin, NEXUS 1690, flashgold	1
2	2.54mm IDC Female Flatcable Header, xxPin, NEXUS 1690, flashgold	1
3	Flatcable, UL2651 AWG #28 PH=1.27, Length xxx	1



Connecting table

P1	P2
1	1
2	2
⋮	⋮
64	64

$$L1 = \left(\frac{\text{No. of contacts}}{2} - 1 \right) \times 2.54$$

$$L2 = \left(\frac{\text{No. of contacts}}{2} \right) \times 2.54 + 4.70$$

Tolerances		
Linear	X.	± 0.30
	.X	± 0.25
	.XX	± 0.20

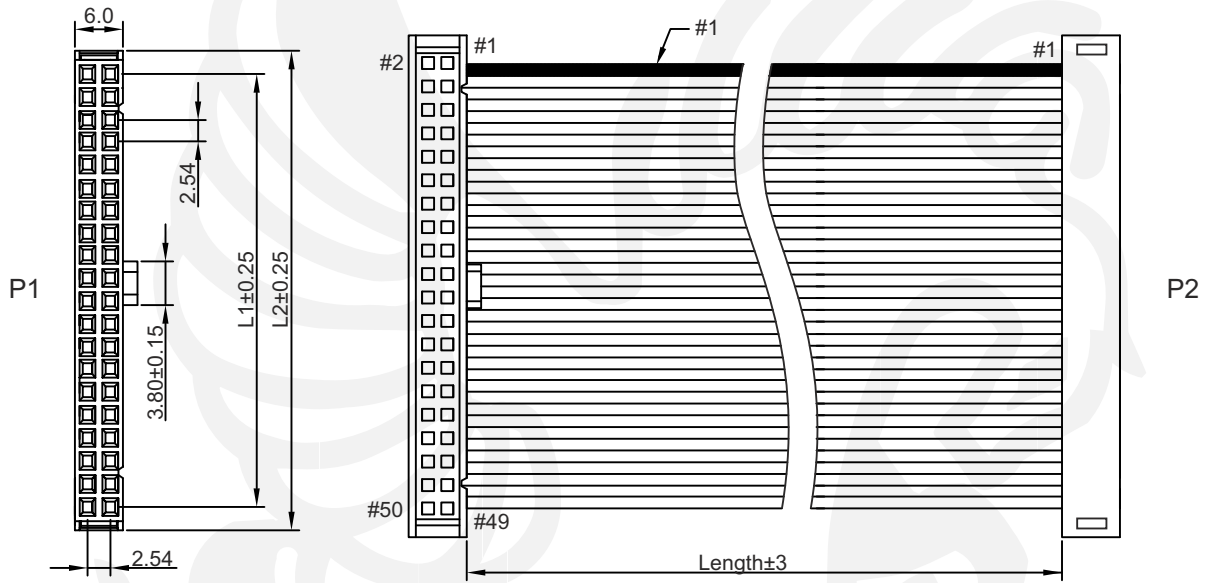


All dim. in mm

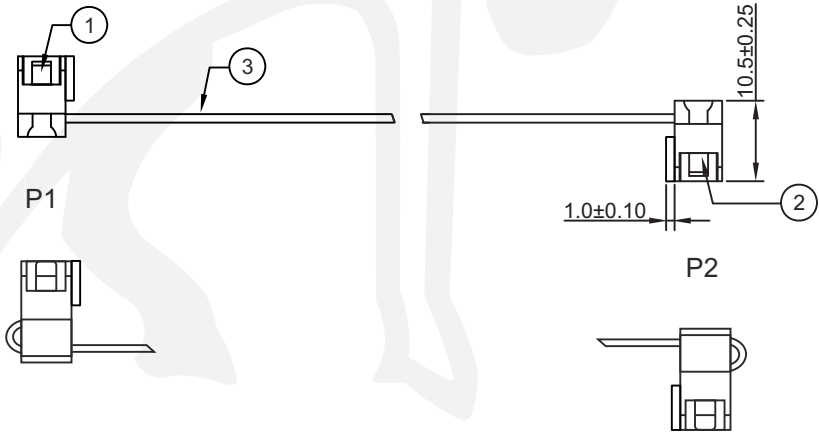
CA0002	A	BB	50	050
Type	Header Type P1, P2	No. of contacts	Length L	
A = Type A	A = with bar & strain relief	06 ~ 64	i.e. 050 = 50mm	
B = Type B	B = with bar, w/o strain relief			
C = Type C	C = w/o bar, with strain relief			
	D = w/o bar & strain relief			

Series CA0002 Flatcable with 2x 2.54mm IDC Female Header Type B

Item	Description	Qty
1	2.54mm IDC Female Flatcable Header, xxPin, NEXUS 1690, flashgold	1
2	2.54mm IDC Female Flatcable Header, xxPin, NEXUS 1690, flashgold	1
3	Flatcable, UL2651 AWG #28 PH=1.27, Length xxx	1



with strain relief



Connecting table

P1	P2
1	1
2	2
⋮	⋮
64	64

$$L1 = \left(\frac{\text{No. of contacts}}{2} - 1 \right) \times 2.54$$

$$L2 = \left(\frac{\text{No. of contacts}}{2} \right) \times 2.54 + 4.70$$

Tolerances		
Linear	X.	± 0.30
	.X	± 0.25
	.XX	± 0.20

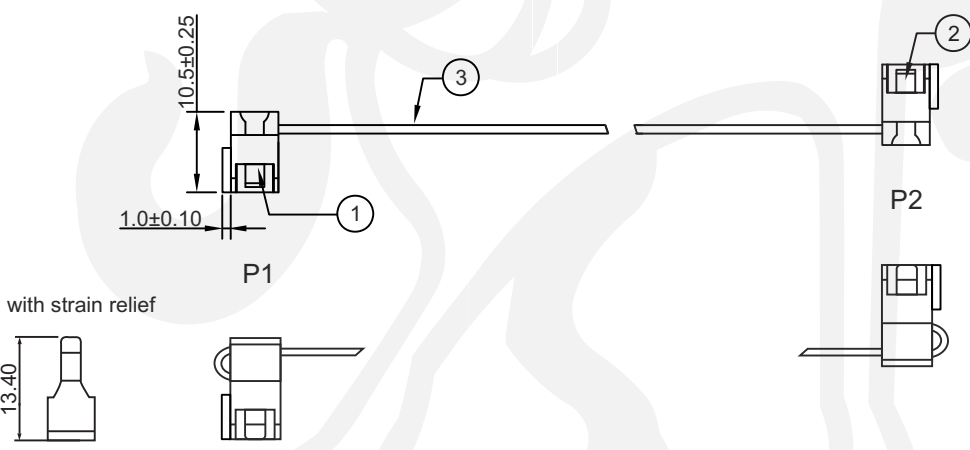
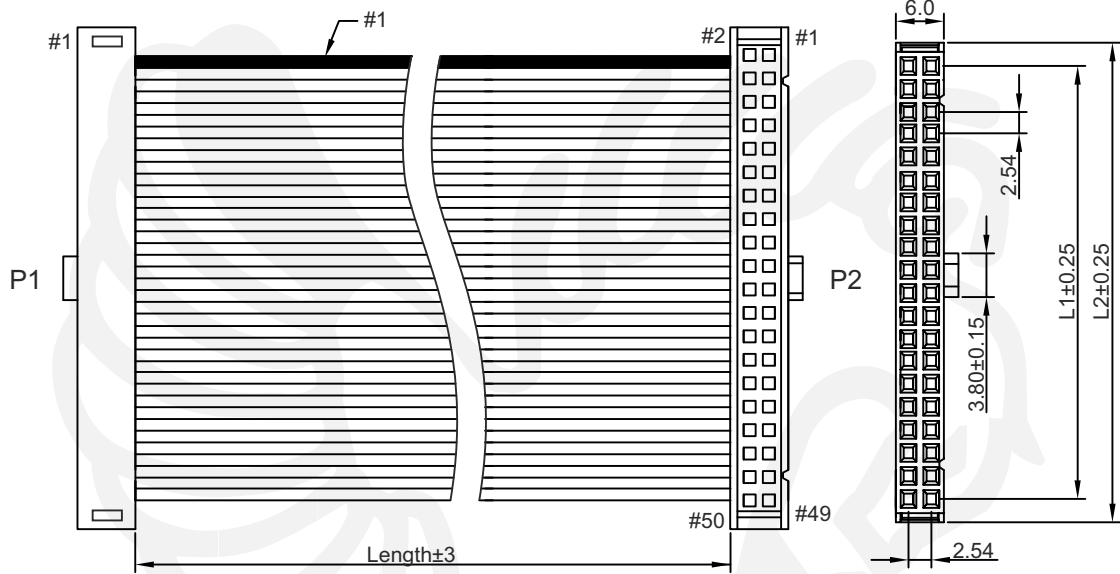


All dim. in mm

CA0002	B	BB	50	050
Type	Header Type P1, P2	No. of contacts	Length L	
A = Type A	A = with bar & strain relief	06 ~ 64	i.e. 050 = 50mm	
B = Type B	B = with bar, w/o strain relief			
C = Type C	C = w/o bar, with strain relief			
	D = w/o bar & strain relief			

Series CA0002 Flatcable with 2x 2.54mm IDC Female Header Type C

Item	Description	Qty
1	2.54mm IDC Female Flatcable Header, xxPin, NEXUS 1690, flashgold	1
2	2.54mm IDC Female Flatcable Header, xxPin, NEXUS 1690, flashgold	1
3	Flatcable, UL2651 AWG #28 PH=1.27, Length xxx	1



Connecting table

P1	P2
1	1
2	2
⋮	⋮
64	64

$$L1 = \left(\frac{\text{No. of contacts}}{2} - 1 \right) \times 2.54$$

$$L2 = \left(\frac{\text{No. of contacts}}{2} \right) \times 2.54 + 4.70$$

Tolerances		
Linear	X.	± 0.30
	.X	± 0.25
	.XX	± 0.20



All dim. in mm

CA0002	C	BB	50	050
Type	Header Type P1, P2	No. of contacts	Length L	
A = Type A	A = with bar & strain relief	06 ~ 64	i.e. 050 = 50mm	
B = Type B	B = with bar, w/o strain relief			
C = Type C	C = w/o bar, with strain relief			
	D = w/o bar & strain relief			

This document is protected by copyright law and international treaties. Reproduction except for personal use and distribution of this document will be prosecuted to the maximum extent possible under the law. Subject to changes without prior notice. Errors and omissions excepted. Copyright by NEXUS COMPONENTS GmbH