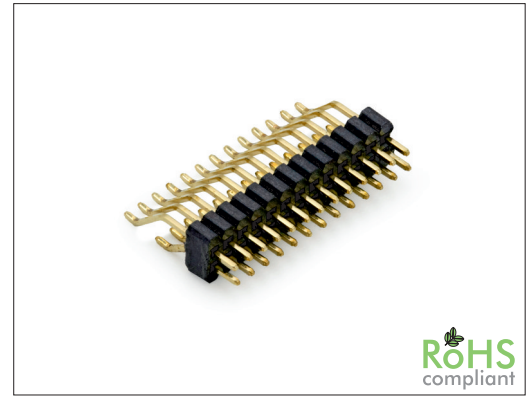


# 1005 Series

# 1.00 x 1.00 mm SMT Pin Header Dual Row

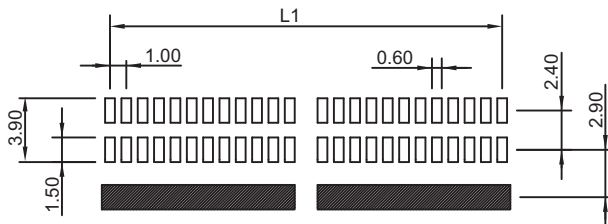
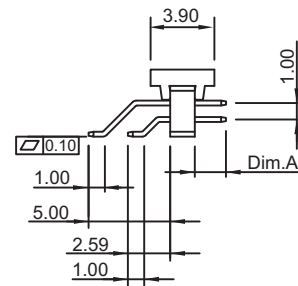
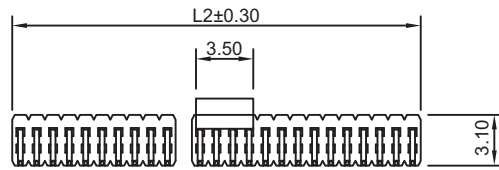
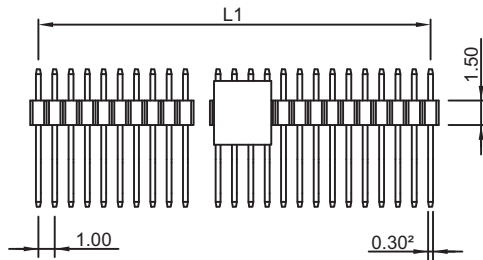
## General specifications

Insulator material	LCP, UL94V-0
Contact material	Phosphor bronze
Current rating	1 A
Contact resistance	20 mΩ max.
Insulator resistance	1000 MΩ min.
Dielectrical withstanding	300 VAC for 1 min
Operating temperature	-40 °C to +125 °C
Soldering	JEDEC leadfree reflow soldering process
<b>Mating parts series</b>	
1008	



## Mechanical dimensions

Unit: mm



Recommended P.C.B. layout

$$L1 = \frac{\text{No. of contacts}}{2} - 1$$

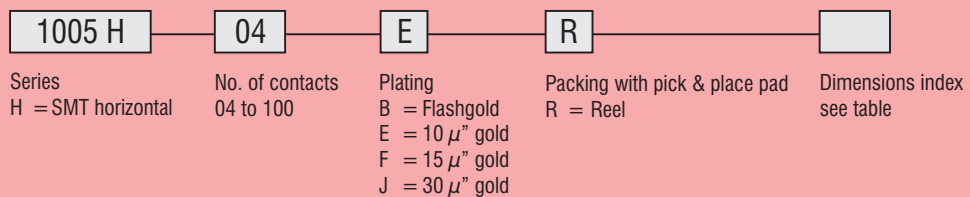
$$L2 = \frac{\text{No. of contacts}}{2}$$

Tolerances		
Linear	X	± 0.30
	.XX	± 0.20
	.XXX	± 0.10

Ordercode dimensions	
Index	Dim. A
none	1.65
01	1.91

Other pin length on customer request

## Part numbering guide



\* standard

