

1681 Series

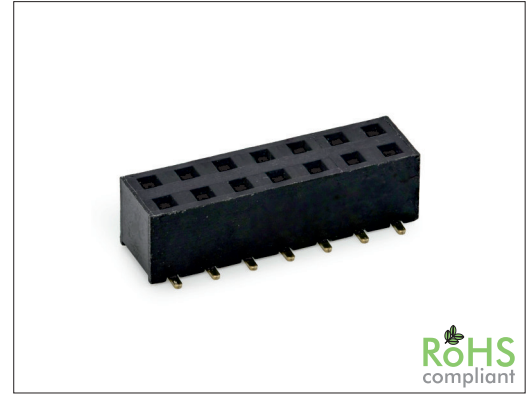
2.54 mm SMT Female Header, Dual Row, Dual Entry

General specifications

Insulator material	High temperature plastic, UL94V-0
Contact material	Phosphor bronze
Current rating	3 A
Contact resistance	20 mΩ max.
Insulator resistance	1000 MΩ min.
Dielectrical withstanding	500 VAC for 1 min
Operating temperature	-40 °C to +105 °C
Soldering	JEDEC lead free reflow soldering process

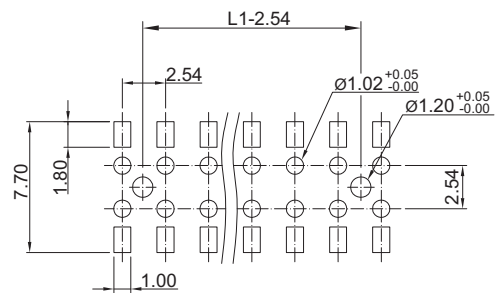
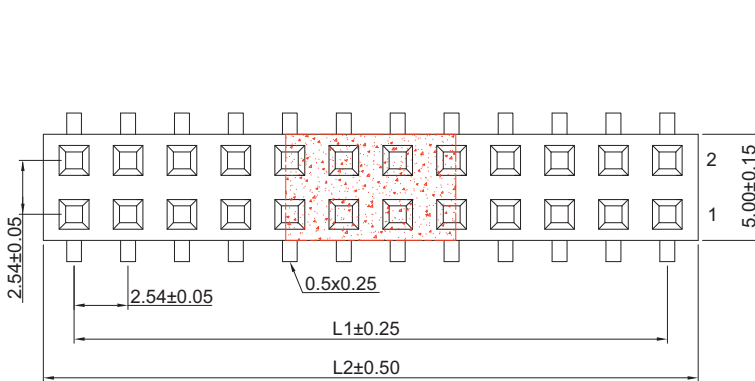
Mating parts series

1520, 1525, 1534, 1620, 1622, 1634

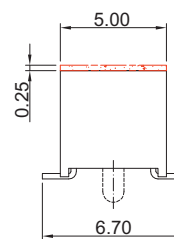
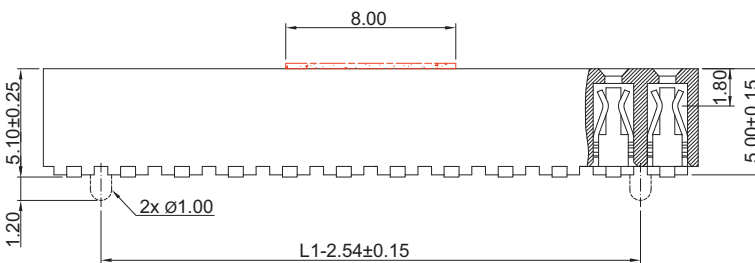


Mechanical dimensions

Unit: mm



Recommended P.C.B. layout unless otherwise tolerances ± 0.05



$$L1 = \left(\frac{\text{No. of contacts}}{2} - 1 \right) \times 2.54$$

$$L2 = \left(\frac{\text{No. of contacts}}{2} \right) \times 2.54 + 0.50$$

Tolerances		
Linear	X	± 0.38
	.XX	± 0.25

Part numbering guide

1681 V	04	B	R	
Series V = SMT vertical	No. of contacts 04 to 80	Contact plating B = Flashgold E = 10μ" gold F = 15μ" gold J = 30μ" gold	Packing with pick & place pad R = Reel T = Tube	Option position peg 1 = w/ peg

* standard

