

2393 Series

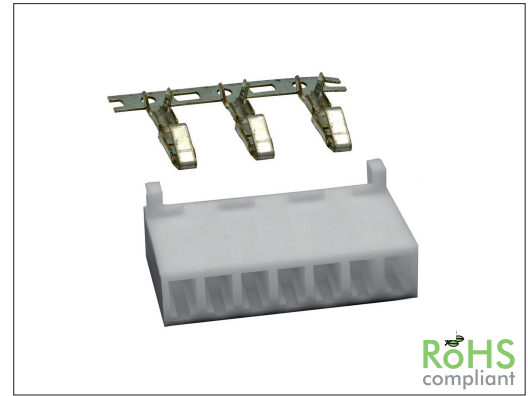
3.96 mm Housing and Terminal

General specifications

Insulator material	Nylon 66, UL94V-0, color: nature
Contact material	Brass, plating: tin
Current rating	6.5 A
Voltage rating	250 V AC/DC
Contact resistance	10 mΩ max.
Insulator resistance	1000 MΩ min.
Dielectrical withstanding	500 VAC for 1 min
Operating temperature	-55 °C to +105 °C
Wire range	AWG 18 to 24

Mating parts series

2393-SR



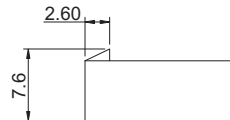
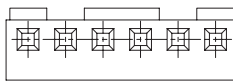
RoHS
compliant

Mechanical dimensions

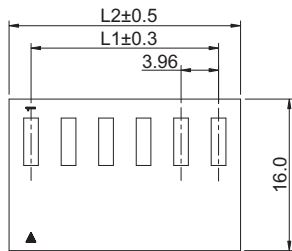
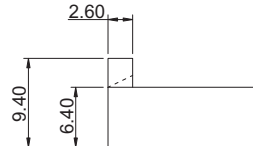
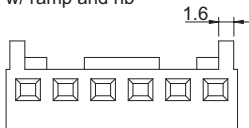
Unit: mm

2393P

w/ ramp



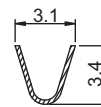
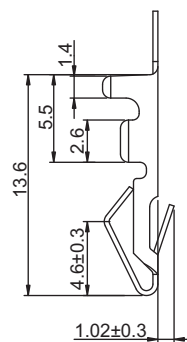
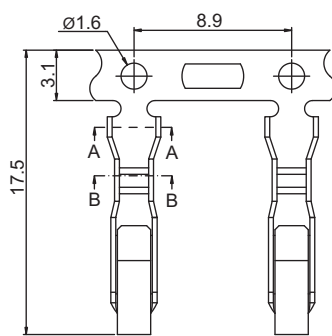
w/ ramp and rib



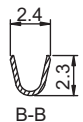
$$L1 = (\text{No. of contacts} - 1) \times 3.96$$

$$L2 = \text{No. of contacts} \times 3.96 + 0.68$$

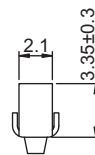
2393T



A-A



B-B



Tolerances		
Linear	.X	± 0.38
	.XX	± 0.25

Part numbering guide

2393 P

02

T

0

Series
P = Housing
T = Terminal

No. of contacts
02 to 15
leave blank for terminal

Contact plating
T = Tin
leave blank for housing

Option for 2393P
0 = w/o ramp and rib
1 = w/ ramp, w/o rib
2 = w/ ramp and rib

* standard

