

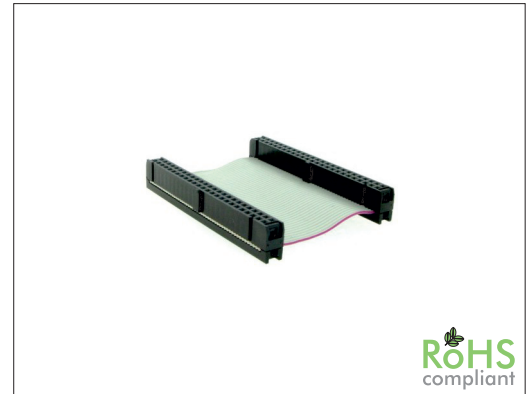
CA0001 Series Flatcable w/ 2x 2.00 mm IDC Female Header

General specifications

Connector insulator material	PBT w/ 30% glass fiber, UL94V-0, color: black
Connector contact material	Phosphor bronze, plating: flashgold
Connector current rating	1 A
Connector contact resistance	30 mΩ max.
Connector insulator resistance	1000 MΩ min.
Connector dielectrical withstanding	500 VAC for 1 min
Connector operating temperature	-40 °C to +105 °C
Cable specification	UL2651

Mating parts series

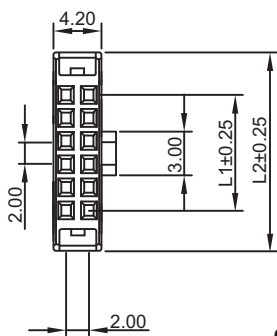
1340, 1342, 1346, 1348, 1440, 1441, 1442, 1445, 1446



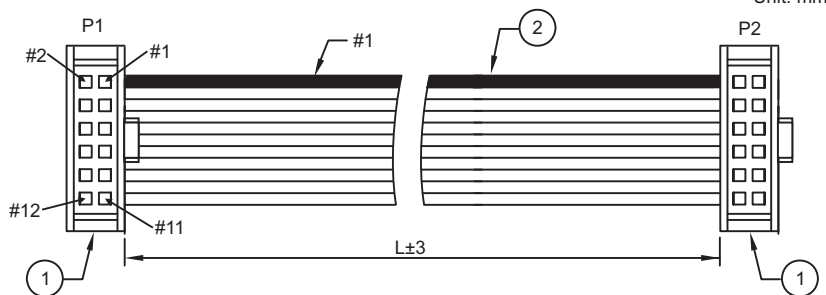
RoHS compliant

Mechanical dimensions

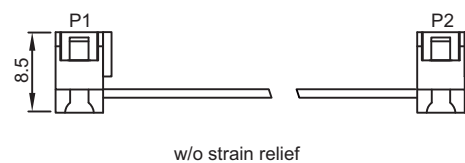
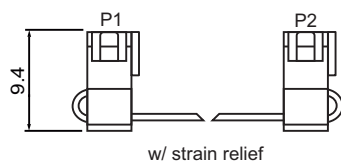
Unit: mm



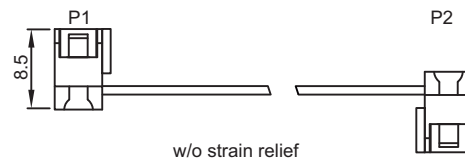
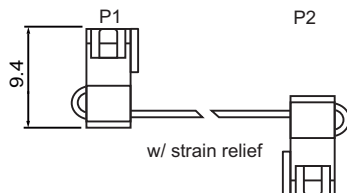
L1 = No. of contacts - 2
L2 = No. of contact + 5.10



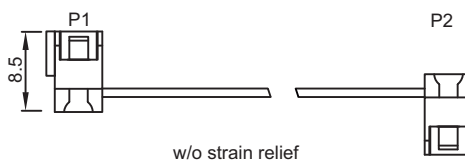
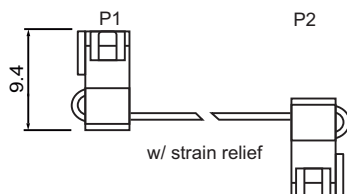
CA0001A



CA0001B



CA0001C



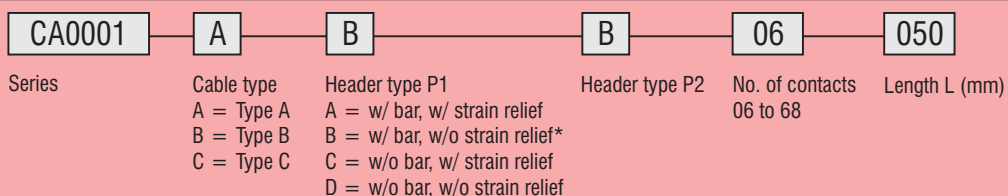
Tolerances

Linear	X.	± 0.30
	.X	± 0.25
	.XX	± 0.20

Parts descriptions

Part no.	Description
1	2.00 IDC female header NEXUS series 1490
2	Flatcable, UL2651, AWG 28, PH 1.00

Part numbering guide



* standard

