

2269 Series

2.50 mm Board-In Connector

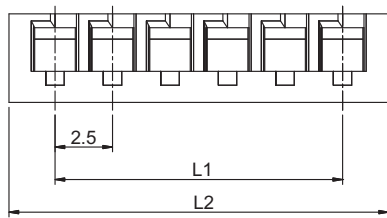
General specifications

Insulator material	Nylon 66, UL94V-0, color: natural
Contact material	Copper alloy, plating: tin
Current rating	3 A
Voltage rating	250 V AC/DC
Contact resistance	10 mΩ max.
Insulator resistance	1000 MΩ min.
Dielectrical withstanding	800 VAC for 1 min
Operating temperature	-25 °C to +85 °C
Mating parts series	

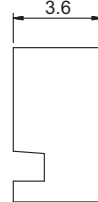
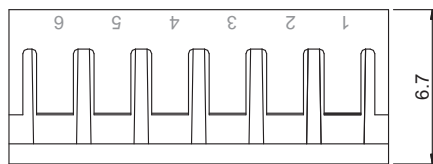


Mechanical dimensions

Unit: mm

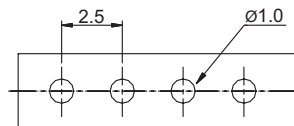
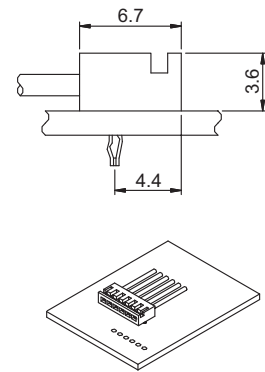
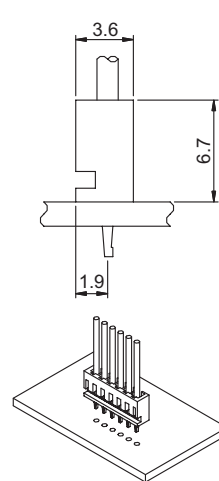


L1 = No. of contacts x 2.50 - 2.50
L2 = No. of contacts x 2.50 + 1.50



2269PS

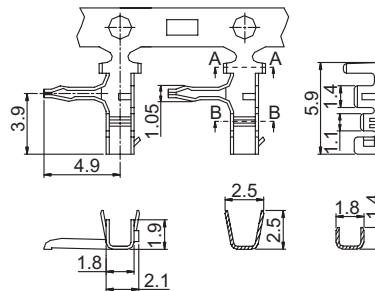
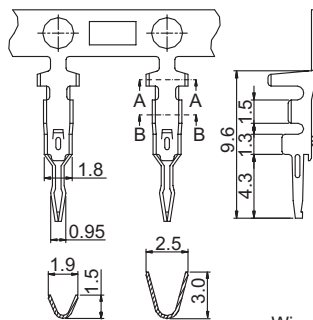
2269PR



Recommended P.C.B. layout

2269TS

2269TR



Wire range: AWG 24 to 30

Tolerances		
Linear	X	± 0.38
	.XX	± 0.25

Part numbering guide

2269 PS

02

Series
PS = Housing straight
TS = Terminal straight
PR = Housing right angle
TR = Terminal right angle

No. of contacts
02 to 16
(leave blank for terminal)

* standard

