

1007 Series

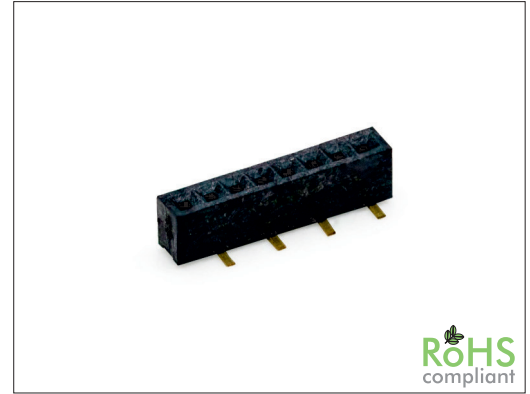
1.00 x 1.00 mm SMT Female Header Single Row

General specifications

Insulator material	LCP, UL94V-0, color: black
Contact material	Phosphor bronze
Current rating	1 A
Contact resistance	20 mΩ max.
Insulator resistance	1000 MΩ min.
Dielectrical withstanding	300 VAC for 1 min
Operating temperature	-40 °C to +125 °C
Soldering	JEDEC leadfree reflow soldering process

Mating parts series

1000

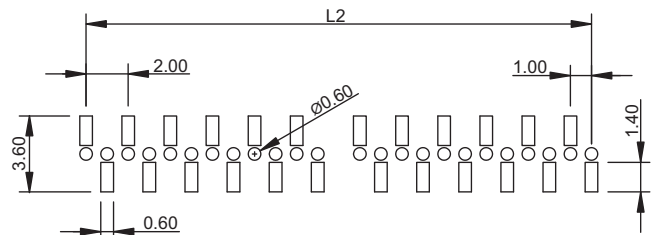
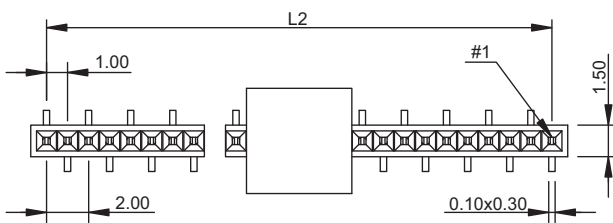


RoHS
compliant

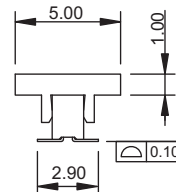
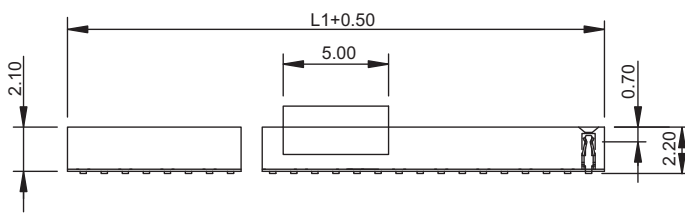
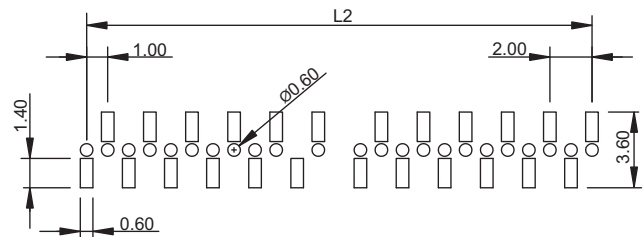
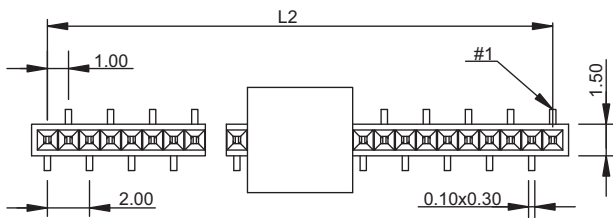
Mechanical dimensions

Unit: mm

A-Type



B-Type



L1 = No. of contacts x 1

L2 = (No. of contacts-1) x 1

Tolerances		
Linear	X	± 0.30
	.XX	± 0.20
	.XXX	± 0.10

Part numbering guide

1007 V	02	E	A	R
Series V = SMT vertical	No. of contacts 02 to 50	Plating B = Flashgold E = 10 μ ² gold F = 15 μ ² gold J = 30 μ ² gold	Pin 1 position A = Bottom right B = Top right	Packing with pick & place pad R = Reel

* standard

