

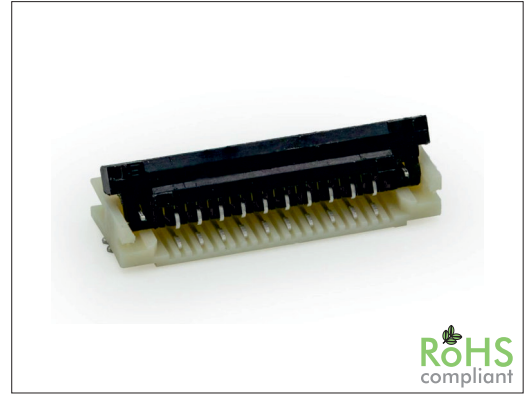
2980 Series

1.00 mm SMT FPC Easy-Lock ZIF Socket

General specifications

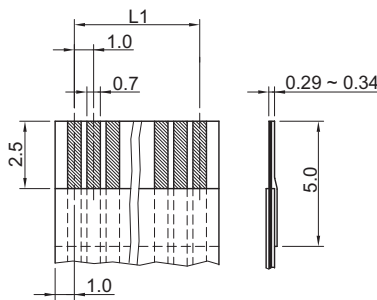
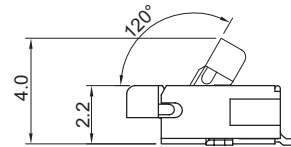
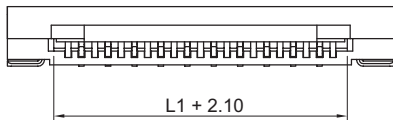
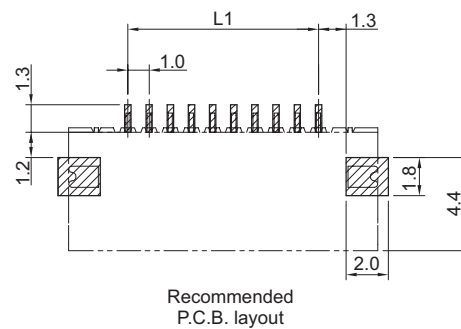
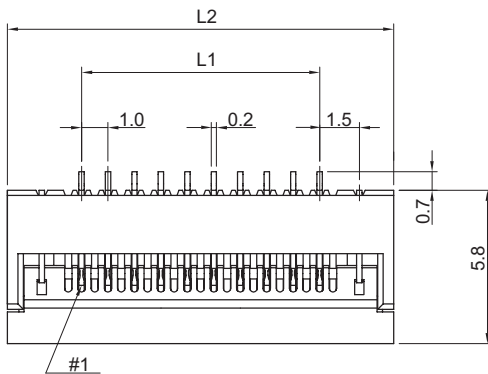
| | |
|---------------------------|--|
| Insulator material | High temperature plastic, UL94V-0 |
| Contact material | Copper alloy |
| Current rating | 1.0 A |
| Voltage rating | 100 V AC/DC |
| Contact resistance | 50 mΩ max. |
| Insulator resistance | 500 MΩ min. |
| Dielectrical withstanding | 500 VAC for 1 min |
| Operating temperature | -40 °C to +105 °C |
| Soldering | JEDEC lead free reflow soldering process |

Mating parts series

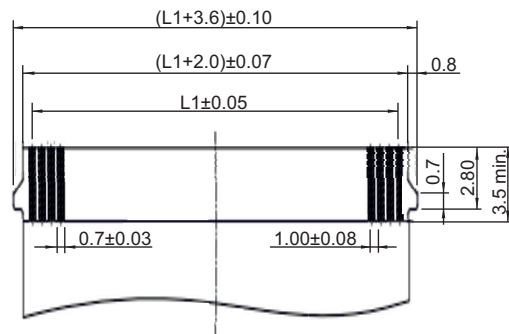


Mechanical dimensions

Unit: mm



Accommodated FFC/FPC thickness: 0.35±0.05



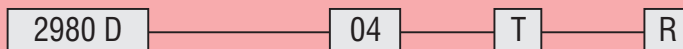
Accommodated FFC/FPC w/ lock

$L1 = (\text{No. of contacts} - 1) \times 1.00$

$L2 = \text{No. of contacts} \times 1.00 + 4.60$

| Tolerances | | |
|------------|-----|--------|
| Linear | X | ± 0.38 |
| | .XX | ± 0.25 |

Part numbering guide



Series
D = SMT horizontal down contact
DL = w/ lock

No. of contacts
04 to 32

Contact plating
T = Tin

Packing
R = Reel
T = Tube

* standard

