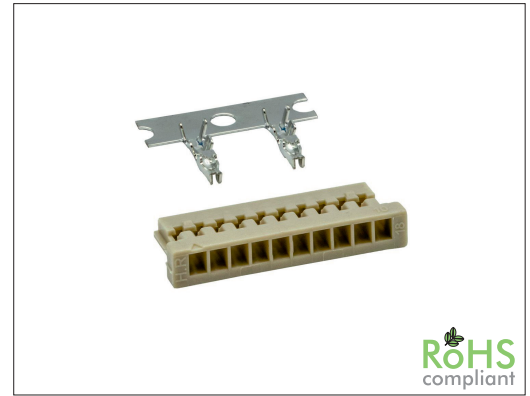


2122 Series

1.25 mm HR SMT Housing and Terminal

General specifications

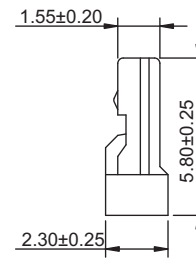
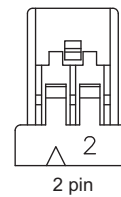
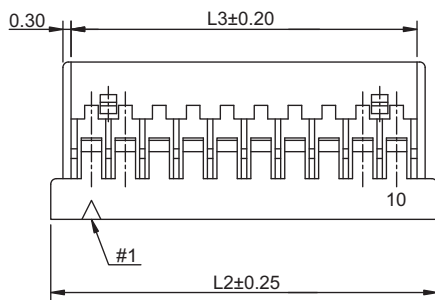
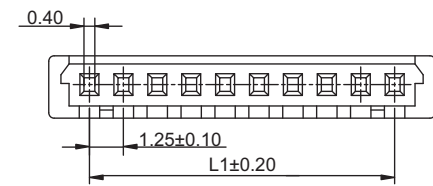
Insulator material	Nylon 66, UL94V-0, color: nature
Contact material	Phosphor bronze
Current rating	1.0 A
Voltage rating	150 V AC/DC
Contact resistance	30 mΩ max.
Insulator resistance	500 MΩ min.
Dielectrical withstanding	500 VAC for 1 min
Operating temperature	-25 °C to +85 °C
Mating parts series	
2122-H	



Mechanical dimensions

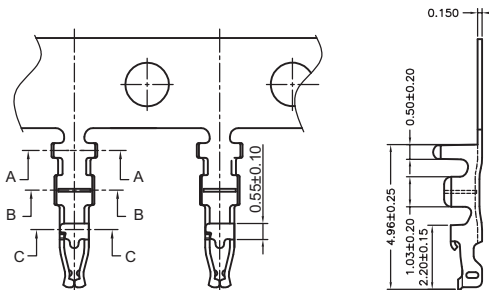
Unit: mm

2122P



$L1 = (\text{No. of contacts} - 1) \times 1.25$
 $L2 = \text{No. of contacts} \times 1.25 + 1.75$
 $L3 = \text{No. of contacts} \times 1.25 + 0.25$

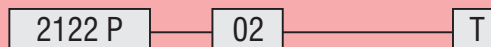
2122T



Wire range: AWG 26 to 32

Tolerances		
Linear	X	± 0.25
	.XX	± 0.15

Part numbering guide



Series
P = Housing
T = Terminal

No. of contacts
02 to 15, 20, 21, 25, 30
(leave blank for terminal)

Contact plating
T = Tin
B = Flashgold
(leave blank for housing)

* standard

