

# 1661 Series

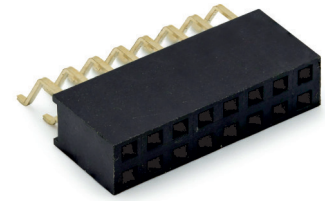
# 2.54 mm SMT Female Header Side Entry

### General specifications

Insulator material	High temperature plastic, UL94V-0
Contact material	Copper alloy
Current rating	3 A
Voltage rating	250 V AC/DC
Contact resistance	20 mΩ max.
Insulator resistance	5000 MΩ min.
Dielectrical withstanding	1000 VAC for 1 min
Operating temperature	-40 °C to +105 °C
Soldering	JEDEC lead free reflow soldering process

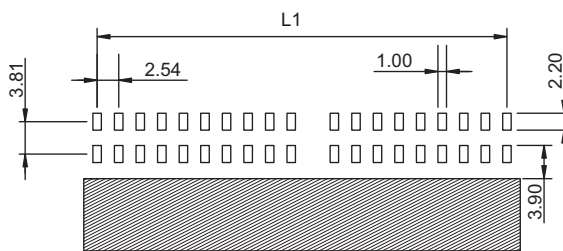
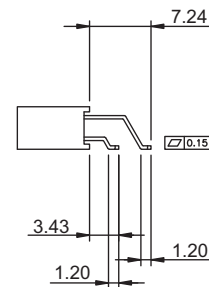
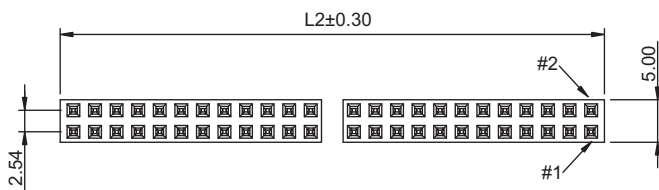
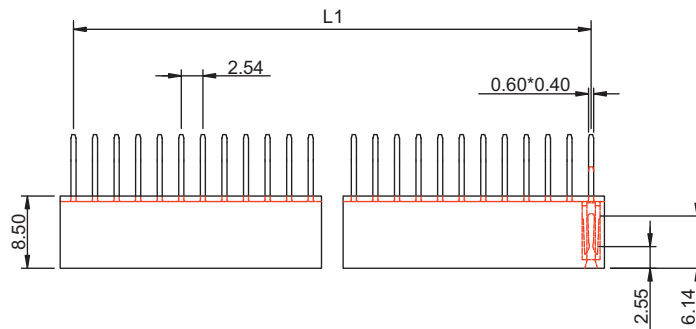
### Mating parts series

1520, 1525, 1534, 1620, 1622, 1634



### Mechanical dimensions

Unit: mm



Recommended P.C.B. layout

$$L1 = \frac{(\text{No. of contacts} \times 2.54)}{2} - 2.54$$

$$L2 = \frac{(\text{No. of contacts} \times 2.54)}{2} + 0.60$$

Tolerances	
Linear	.X ± 0.30
	.XX ± 0.20

### Part numbering guide

<b>1661 H</b>	<b>04</b>	<b>B</b>	<b>R</b>
Series H = SMT horizontal	No. of contacts 04 to 80	Contact plating B = Flashgold E = 10 μ" gold F = 15 μ" gold J = 30 μ" gold	Packing R = Reel T = Tube

\* standard

