

Series 43380 3x RCA Jack / Cinch Top Entry

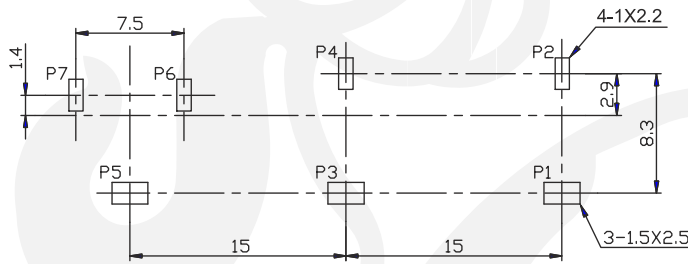
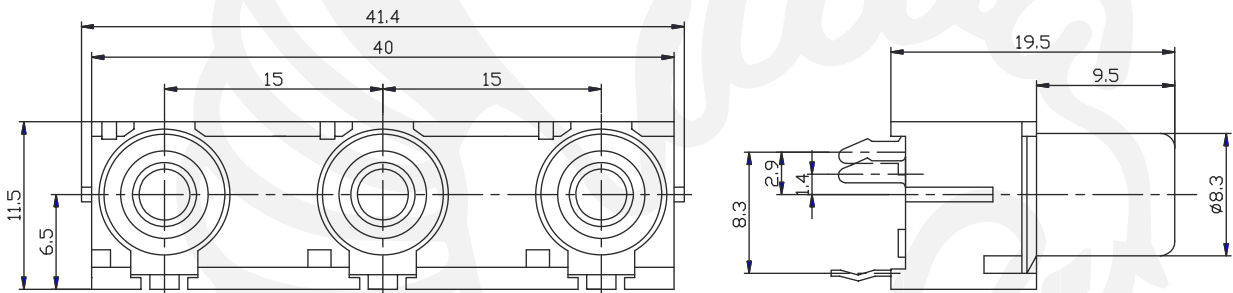
Material

Base, insulator: ABS
 Color washer: PBT + 15% glass fiber
 Contact: Brass

43380Z

Electrical

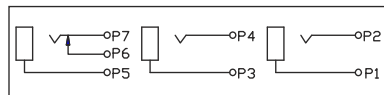
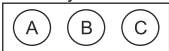
Rating: 0.2 Amp @ 50 VDC
 Contact resistance: 30 mΩ max.
 Insulator resistance: 100 MΩ min.
 Dielectrical withstanding: 500 VAC/minute
 Operating temperature: -40°C ~ +70°C
 Durability: 500 cycles



Recommended P.C.B. Layout

Code	A	B	C
01	white	red	yellow
02	yellow	white	red
03	white	red	orange
04	orange	white	red
05	red	blue	green
06	yellow	blue	green
07	yellow	red	white
08	black	red	white
09	t.b.d. by customer		

Color layout



Tolerances	
Linear	<6 ± 0.1 6~20 ± 0.2 >20 ± 0.3



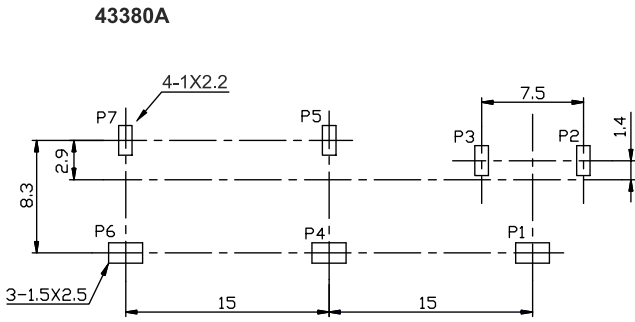
All dim. in mm

43380 Z ————— **01**

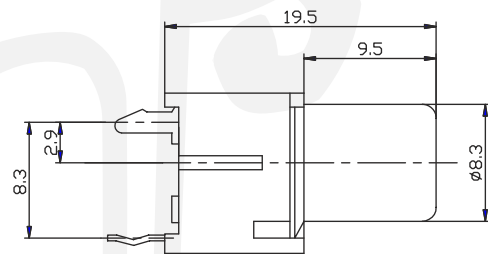
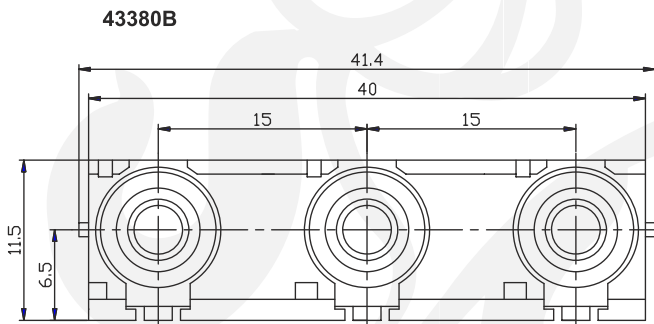
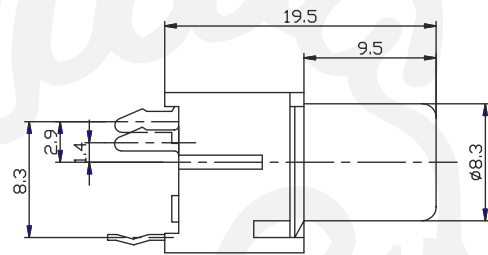
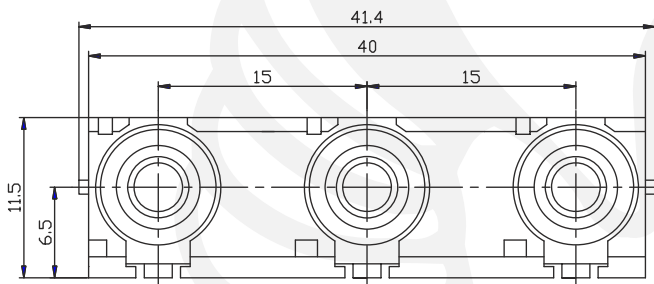
Series 43380Z with switch, 43380C
 43380A with switch
 43380B with switch
 43380D with switch

Color code see table
 Packing Box

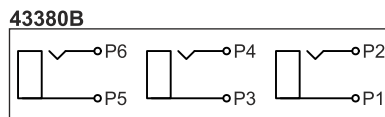
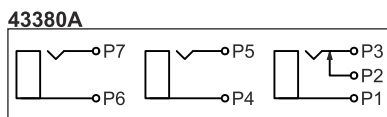
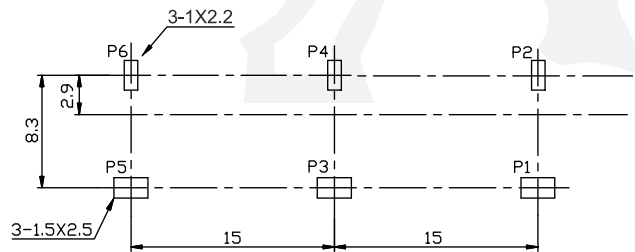
Series 43380 3x RCA Jack / Cinch Top Entry



Recommended P.C.B. Layout



Recommended P.C.B. Layout



Tolerances	
Linear	<6 ± 0.1
	6~20 ± 0.2
	>20 ± 0.3



All dim. in mm

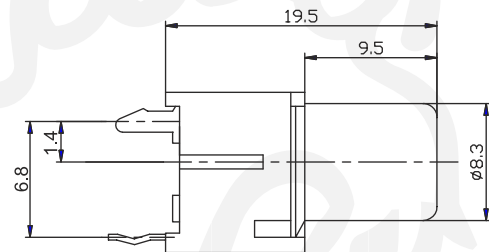
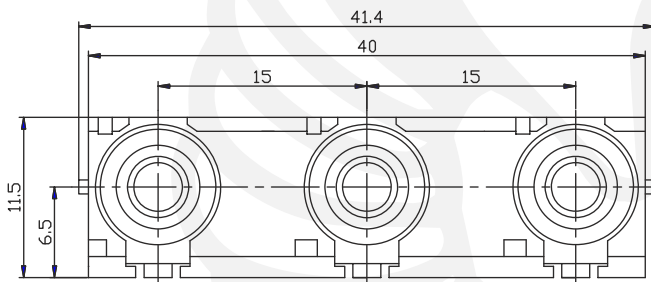
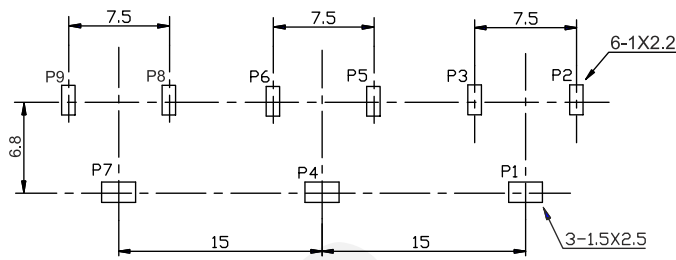
Series 43380 3x RCA Jack / Cinch Top Entry

This document is protected by copyright law and international treaties. Reproduction except for personal use and distribution of this document will be prosecuted to the maximum extent possible under the law. Subject to changes without prior notice. Errors and omissions excepted. Copyright by NEXUS COMPONENTS GmbH

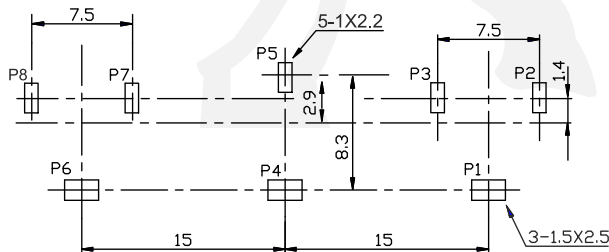
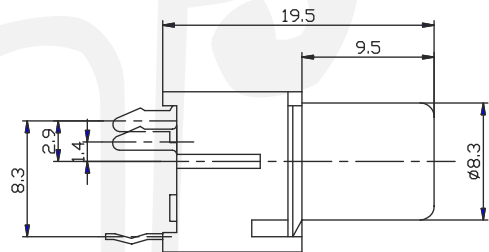
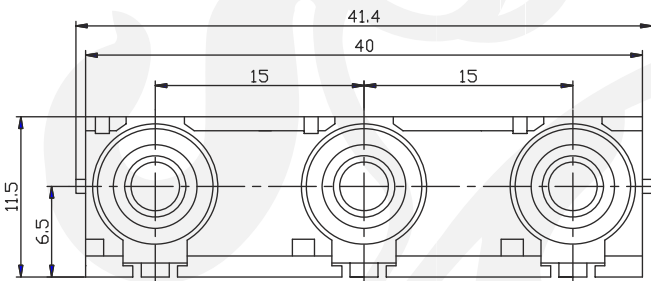
43380C

43380D

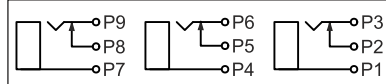
43380C



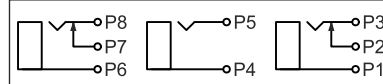
43380D



43380C



43380D



Tolerances	
Linear	<6 ± 0.1
	6-20 ± 0.2
	>20 ± 0.3



All dim. in mm