

2424 Series

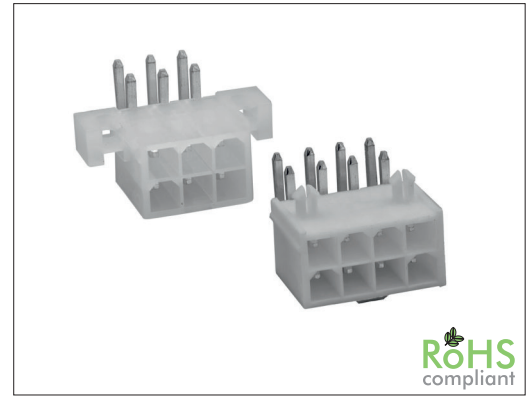
4.20 mm MF Pin Header 90°

General specifications

Insulator material	Nylon
Contact material	Brass
Current rating	8 A (for 2 pins 9 A, for 8 to 10 pins 7 A)
Voltage rating	600 V AC/DC
Contact resistance	10 mΩ max.
Insulator resistance	1000 MΩ min.
Dielectrical withstanding	1500 VAC for 1 min
Operating temperature	UL94V-0: -40 °C to +105 °C, UL94V-2: -25 °C to +85 °C
Soldering	Lead free wave soldering process

Mating parts series

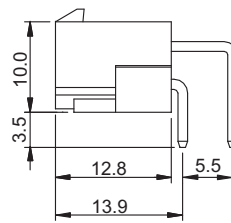
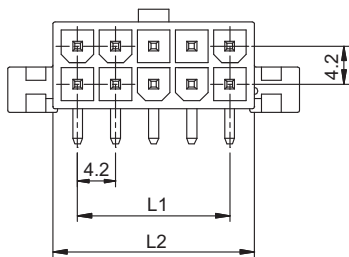
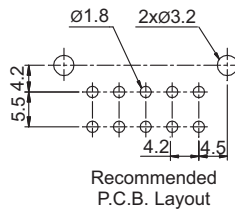
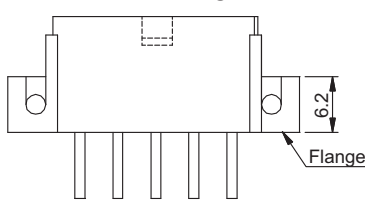
2424-PD, 2424-F or cable assembly



Mechanical dimensions

Unit: mm

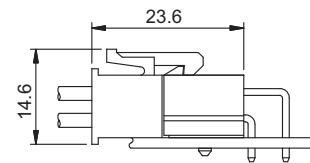
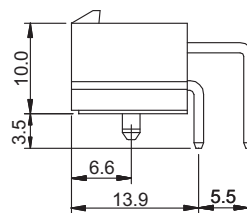
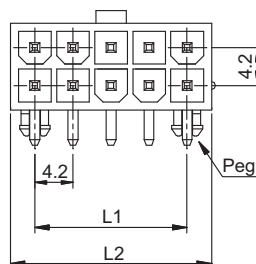
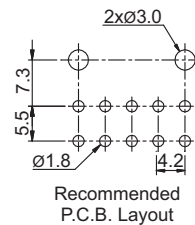
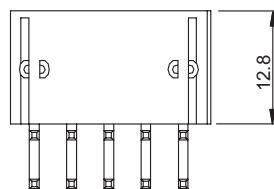
2424R with Flanges



$$L1 = \left(\frac{\text{No. of contacts} - 1}{2} \right) \times 4.20$$

$$L2 = \left(\frac{\text{No. of contacts}}{2} \right) \times 4.20 + 1.80$$

2424R with Pegs



Tolerances		
Linear	X	± 0.38
	.XX	± 0.25

Part numbering guide



Series
R = THT right angle

No. of contacts
02 to 24

Contact plating
T = Tin

Mounting
1 = w/ pegs*
2 = w/ flanges

Material option
V2 = UL94V-2, color: nature
leave blank for UL94V-0, color: white

* standard

