

1581 Series

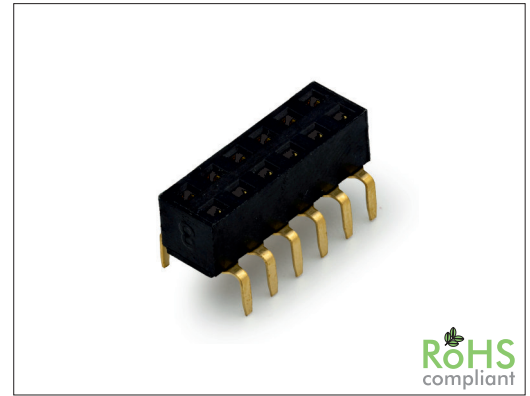
2.54 mm Female Header Dual Row Dual Entry

General specifications

Insulator material	Nylon 6T, UL94V-0
Contact material	Brass
Current rating	3 A
Contact resistance	20 mΩ max.
Insulator resistance	5000 MΩ min.
Dielectrical withstanding	500 VAC for 1 min
Operating temperature	-40 °C to +105 °C
Soldering	Lead free wave soldering process

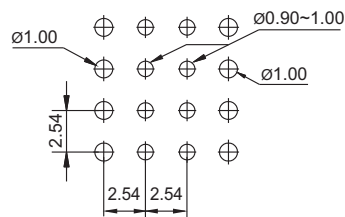
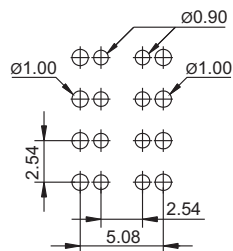
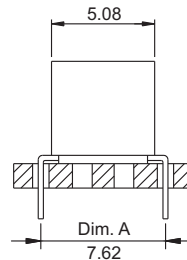
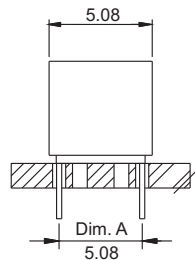
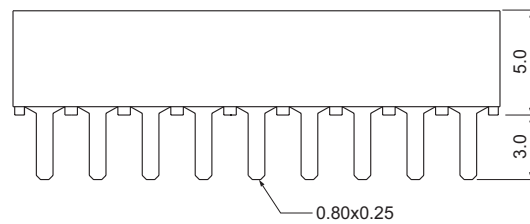
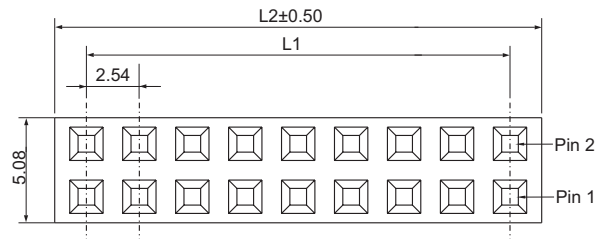
Mating parts series

1520, 1525, 1534, 1620, 1622, 1634



Mechanical dimensions

Unit: mm



Recommended P.C.B. layout

Recommended P.C.B. layout

$$L1 = \left(\frac{\text{No. of contacts}}{2} - 1 \right) \times 2.54$$

$$L2 = \left(\frac{\text{No. of contacts}}{2} \right) \times 2.54 + 0.50$$

Tolerances		
Linear	X	± 0.38
	.XX	± 0.25

Part numbering guide

1581 S	06	B	1
Series S = THT straight	No. of contacts 06 to 80	Contact plating B = Flashgold E = 10 μ" gold F = 15 μ" gold J = 30 μ" gold	Row pitch Dim. A 1 = 7.62 mm* 2 = 5.08 mm

* standard

