

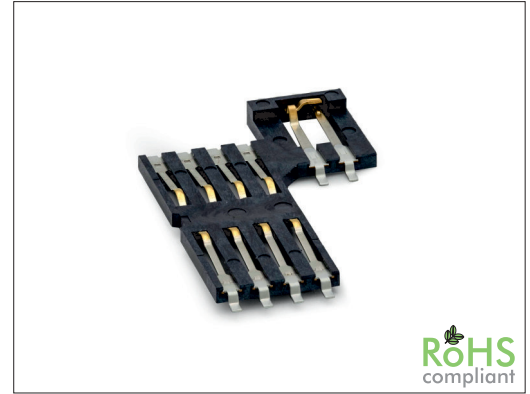
# 0680 Series

# Smart Card 8 Pin SMT, w/o Housing

## General specifications

Insulator material	High temperature thermoplastic, UL94V-0
Contact material	Phosphor bronze, plating: gold over nickel
Current rating	1 A
Voltage rating	30 V AC/DC
Contact resistance	100 mΩ max.
Insulator resistance	1000 MΩ @ 500 VDC
Dielectrical withstanding	500 VAC for 1 min
Operating temperature	-40 °C to +85 °C
Durability	100000 cycles
Soldering	JEDEC lead free reflow soldering process

## Mating parts series

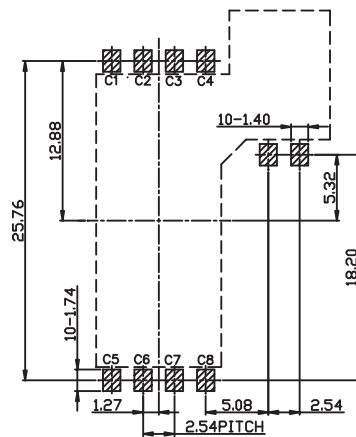
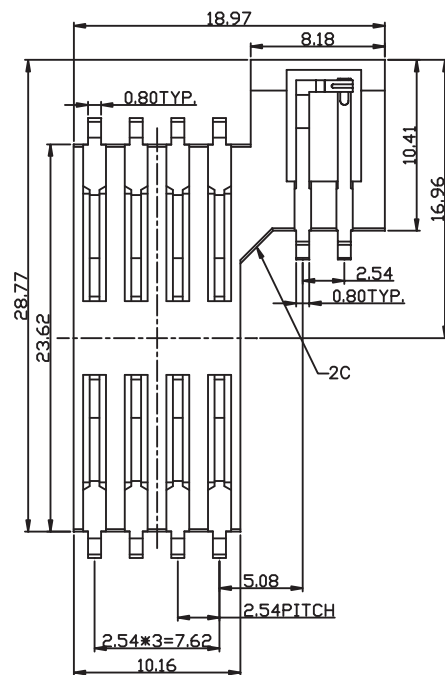
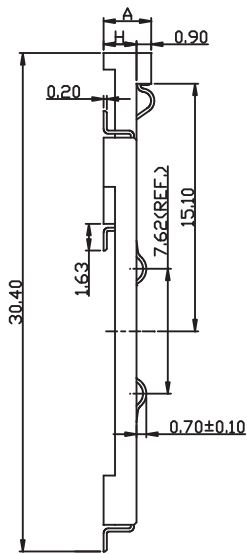


RoHS  
compliant

## Mechanical dimensions

Switch type: blade  
Operation: normally open

Unit: mm



Recommended P.C.B. layout

Base Height	Total Height
H=2.00	A=2.90
H=1.55	A=2.45
H=1.30	A=2.20

Tolerances	
Linear	± 0.15

## Part numbering guide

Series	Contact plating D = 5 μ" gold	No. of data contacts 08 = 8	Standoff H 0 = 1.30 mm 1 = 1.40 mm * 2 = 1.55 mm 3 = 2.00 mm	Packing R = Reel T = Tube
0680	D	08	0	R

\* standard

