

# 1475 Series

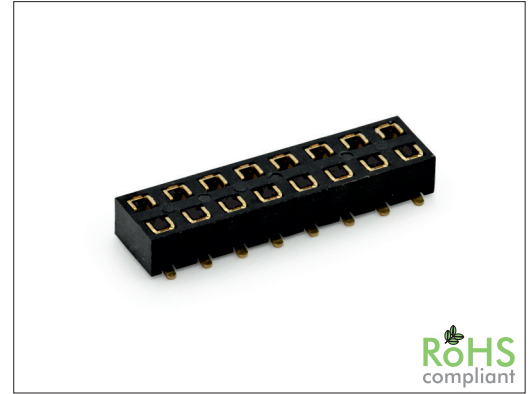
# 2.00 mm SMT Female Header Dual Row Dual Entry

### General specifications

Insulator material	Nylon-6T, UL94V-0, color: black
Contact material	Phosphor bronze
Current rating	2 A
Contact resistance	20 mΩ max.
Insulator resistance	3000 MΩ min.
Dielectrical withstanding	500 VAC for 1 min
Operating temperature	-40 °C to +105 °C
Soldering	JEDEC lead free reflow soldering process

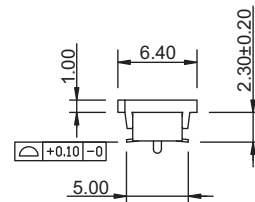
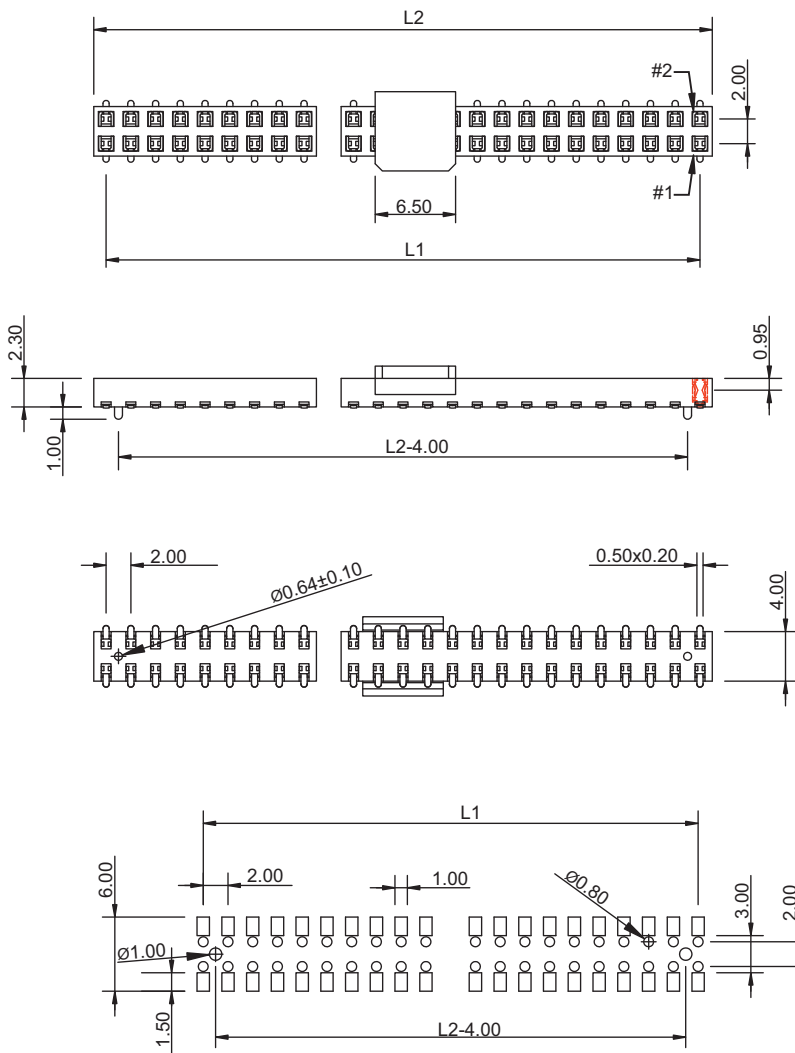
### Mating parts series

1320, 1334, 1420, 1422, 1434, 1435



### Mechanical dimensions

Unit: mm



$$L1 = \left( \frac{\text{No. of contacts}}{2} - 1 \right) \times 2.00$$

$$L2 = \left( \frac{\text{No. of contacts}}{2} \right) \times 2.00$$

Recommended P.C.B. layout

Tolerances		
Linear	X	± 0.30
	.XX	± 0.20
	.XXX	± 0.10

### Part numbering guide

1475 V	04	B	0	R	
Series V = SMT vertical	No. of contacts 04 to 80	Contact plating B = Flashgold E = 10 μ" gold F = 15 μ" gold J = 30 μ" gold	Position pegs 0 = w/o pos. pegs 1 = w/ pos. pegs	Packing R = Reel T = Tube	Pick and place option M = w/ mylar (leave empty for cap)

\* standard

