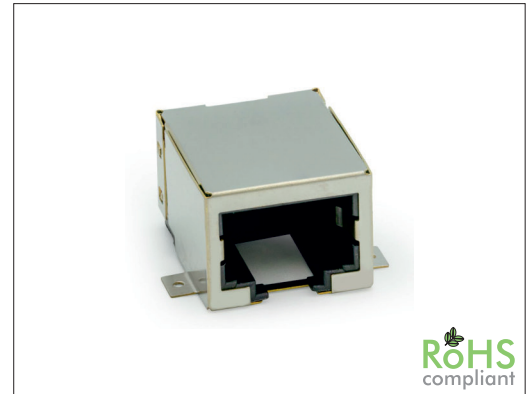


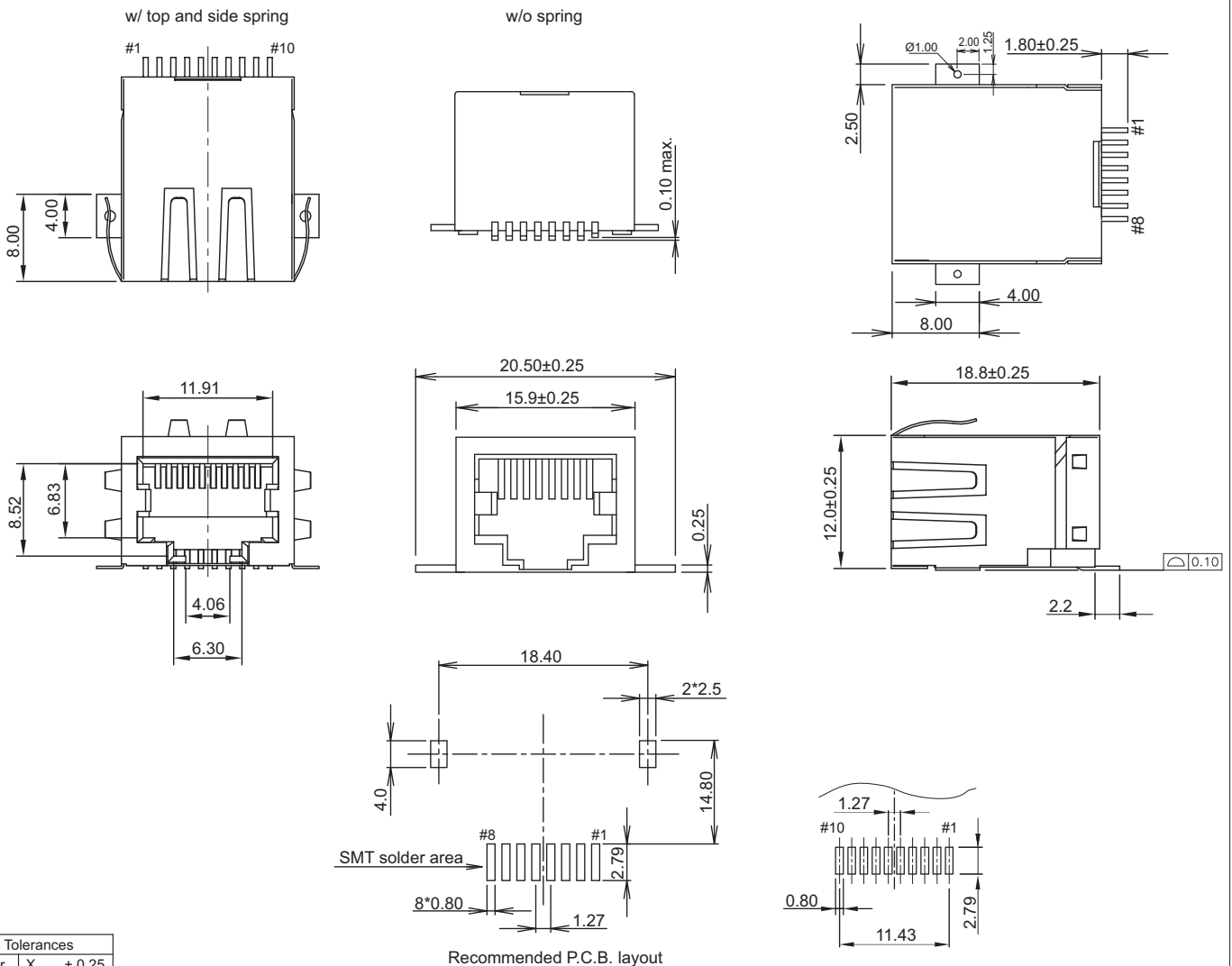
65244 Series SMT RJ45 10P Side Entry Shielded

General specifications	
Insulator material	Nylon-46, UL94V-0, color: black
Contact material	Phosphor bronze
Current rating	1 A
Voltage rating	150 VAC
Contact resistance	50 mΩ max.
Insulator resistance	200 MΩ min.
Dielectrical withstanding	1000 VAC for 1 min
Operating temperature	-40 °C to +85 °C
Soldering	JEDEC lead free reflow soldering process
Durability	750 cycles
Mating parts series	



Mechanical dimensions

Unit: mm



Tolerances		
Linear	X	± 0.25
	.XX	± 0.13
	.XXX	± 0.05

Part numbering guide

65244	C	8	0
Series	Contact plating C = 3 μ" gold D = 6 μ" gold F = 15 μ" gold J = 30 μ" gold	K = 50 μ" gold 8 = 8 1 = 10	No. of contacts 0 = w/o spring 1 = top spring 2 = side spring 3 = top and side spring

* standard

