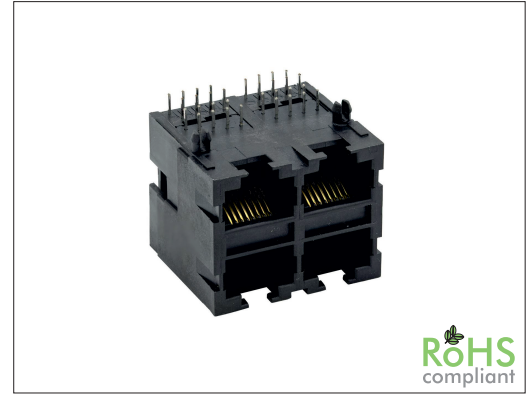


# 6498X Series RJ45 Multiport 8P Side Entry

## General specifications

Insulator material	High temperature thermoplastic, UL94V-0, color: black
Contact material	Phosphor bronze, plating: gold over nickel
Current rating	1.5 A
Voltage rating	125 VAC
Contact resistance	50 mΩ max.
Insulator resistance	1000 MΩ min. @ 500 VDC
Dielectrical withstandig	1000 VAC for 1 min
Operating temperature	-40 °C to +85 °C
Soldering	JEDEC lead free wave soldering process
Durability	750 cycles

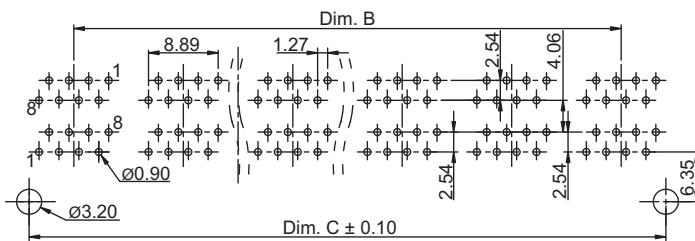
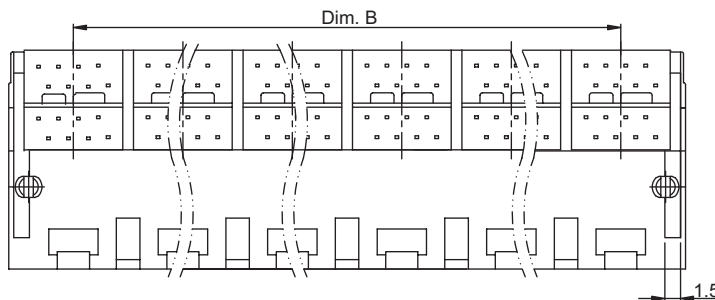
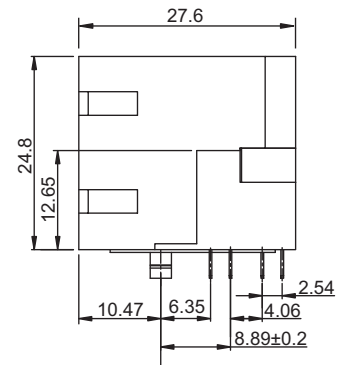
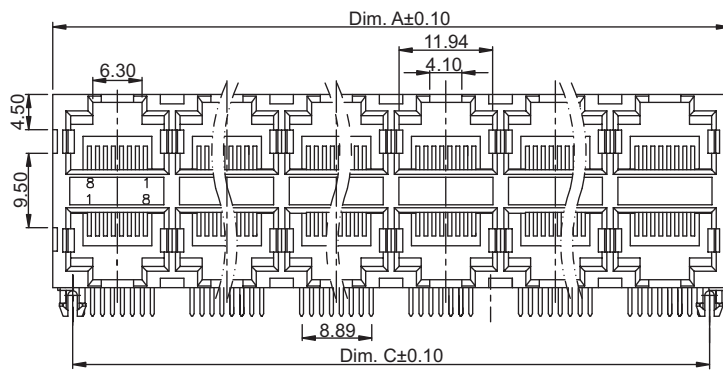
## Mating parts series



RoHS  
compliant

## Mechanical dimensions

Unit: mm



Recommended  
P.C.B. layout

Tolerances		
Linear	X	± 0.20
	.XX	± 0.15

Ports	Dim. A	Dim. B	Dim. C
2x2	30.48	13.97	25.40
2x3	44.45	27.94	39.37
2x4	58.42	41.91	53.34
2x5	72.39	55.88	67.31
2x6	86.36	69.85	81.28
2x8	114.30	97.79	109.22

## Part numbering guide

<b>6498</b>	<b>B</b>	<b>C</b>	
Series	Ports	Contact plating	K = 50 μ" gold
	B = 2x2    F = 2x6	C = 3 μ" gold	
	C = 2x3    H = 2x8	D = 6 μ" gold	
	D = 2x4	F = 15 μ" gold	
	E = 2x5	J = 30 μ" gold	

\* standard

