

1185 Series

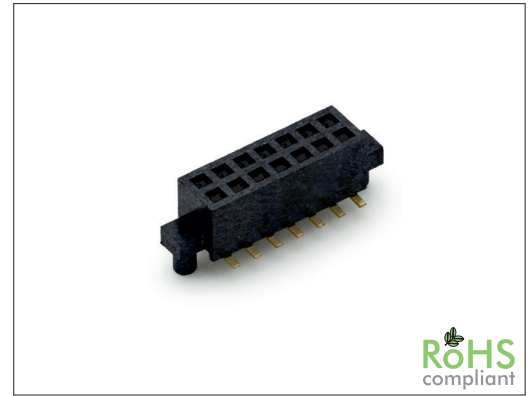
1.27 x 1.27 mm SMT Female Header Dual Row w/ Pos. Peg

General specifications

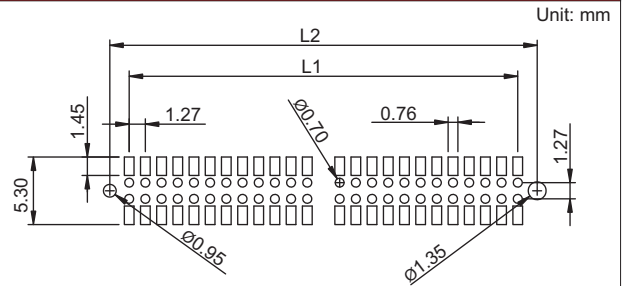
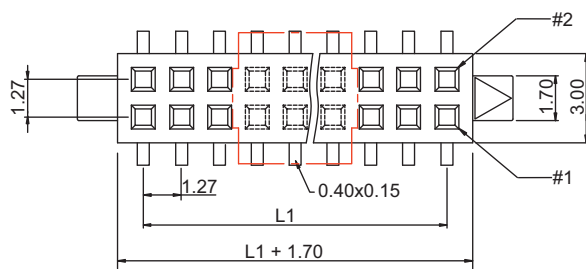
Insulator material	LCP, UL94V-0
Contact material	Copper alloy
Current rating	1 A
Contact resistance	20 mΩ max.
Insulator resistance	1000 MΩ min.
Dielectrical withstanding	500 VAC for 1 min
Operating temperature	-40 °C to +105 °C
Soldering	JEDEC lead free reflow soldering process

Mating parts series

1120, 1126, 1170, 1176

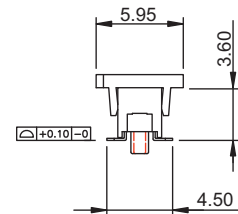
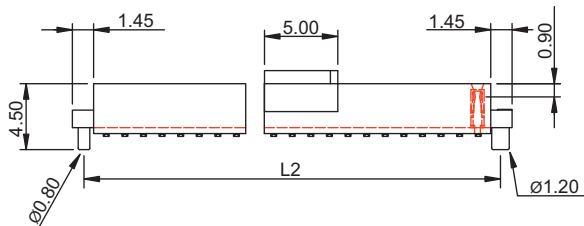


Mechanical dimensions

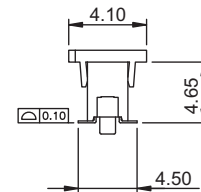
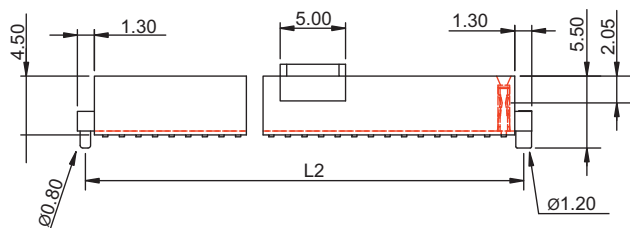


Recommended P.C.B. layout

Height: H=3.60



Height: H=4.65



$$L1 = \left(\frac{\text{No. of contacts}}{2} - 1 \right) \times 1.27$$

$$L2 = \left(\frac{\text{No. of contacts}}{2} - 1 \right) \times 1.27 + 3.04$$

Tolerances		
Linear	X	± 0.38
	.XX	± 0.25

Part numbering guide

1185 V

Series
V = SMT vertical

04

No. of contacts
04 to 100

B

Contact plating
B = Flashgold
E = 10 μ" gold
F = 15 μ" gold
J = 30 μ" gold

1

Height
1 = 3.60 mm
3 = 4.65 mm

R

Packing with pick & place pad
R = Reel
T = Tube

* standard

