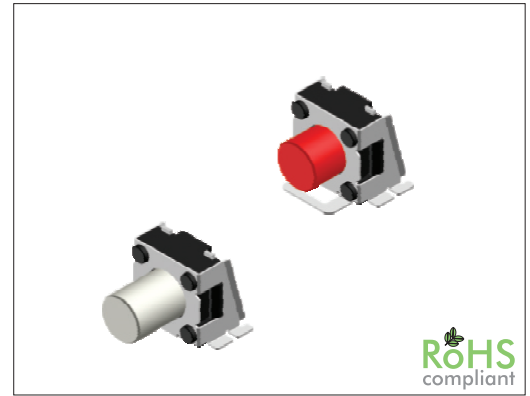


SW-TA3 Series

SMT Tactile Microswitch 6 x 6 mm Right Angle

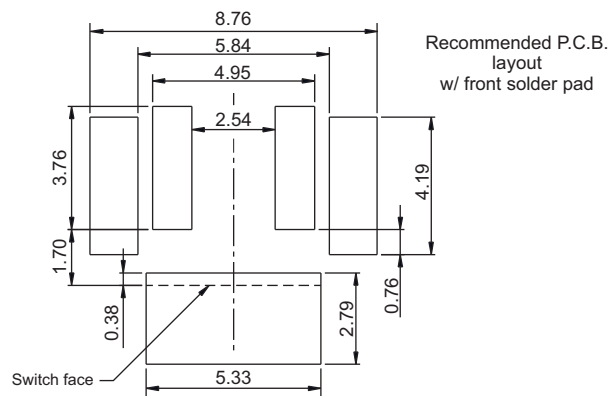
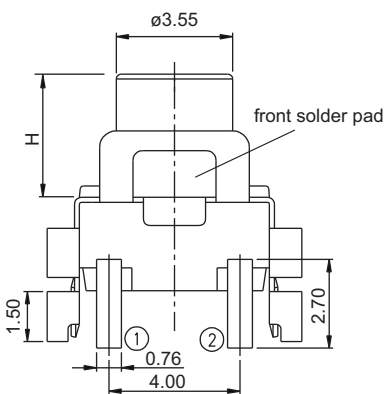
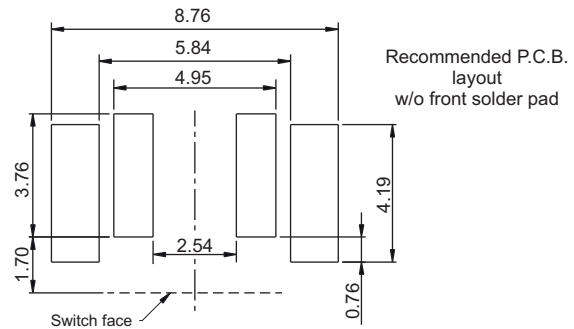
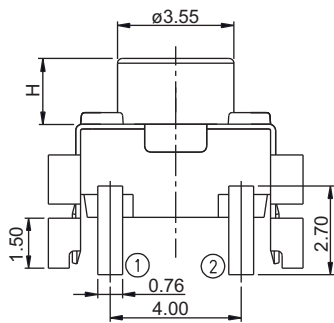
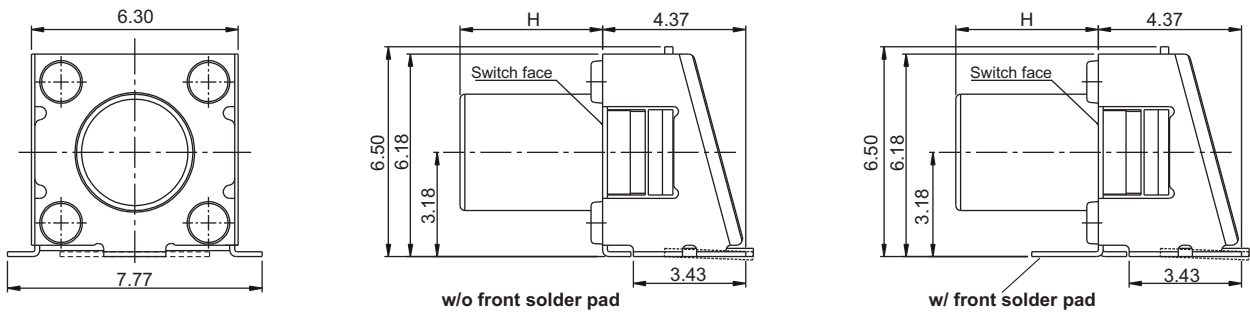
General specifications

| | |
|---------------------------|--|
| Housing material | Nylon, UL94V-0, color: black |
| Actuator material | Nylon, UL94V-0 |
| Contact material | Stainless steel, plating: silver |
| Current / voltage rating | 50 mA / 12 VDC |
| Contact resistance | 100 mΩ max. |
| Insulator resistance | 100 MΩ min. @ 500 VDC |
| Dielectrical withstanding | 250 VAC for 1 min |
| Operating temperature | -25 °C to +70 °C |
| Operating force | see ordercode |
| Travel | 0.15 mm |
| Durability | 200000 cycles |
| Soldering | JEDEC lead free reflow soldering process |



Mechanical dimensions

Unit: mm



| Tolerances | |
|------------|--------|
| Linear | ± 0.20 |

Part numbering guide

| | | | | | | |
|--------|--|---|---|---|---|----------------------|
| SW-TA3 | 1 | R | 2 | A | V | TR |
| Series | Stem length H 1 = 4.35 mm 2 = 2.80 mm 3 = 2.30 mm | Color fo stem R = Red E = Grey W = White | Operating force 2 = 185±50gf 3 = 260±50gf | Front solder pad A = w/o pad (leave empty for w/ pad) | Material V = Lead free Q = Halogen free | Packing TR = Reel |

* standard

