

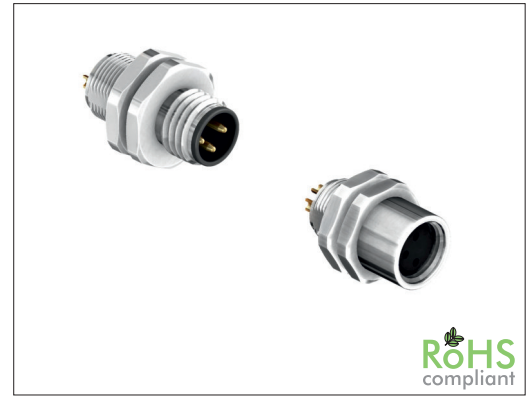
5622 Series

M8 Rear Fastened Panel Mount Straight Solder Type

General specifications

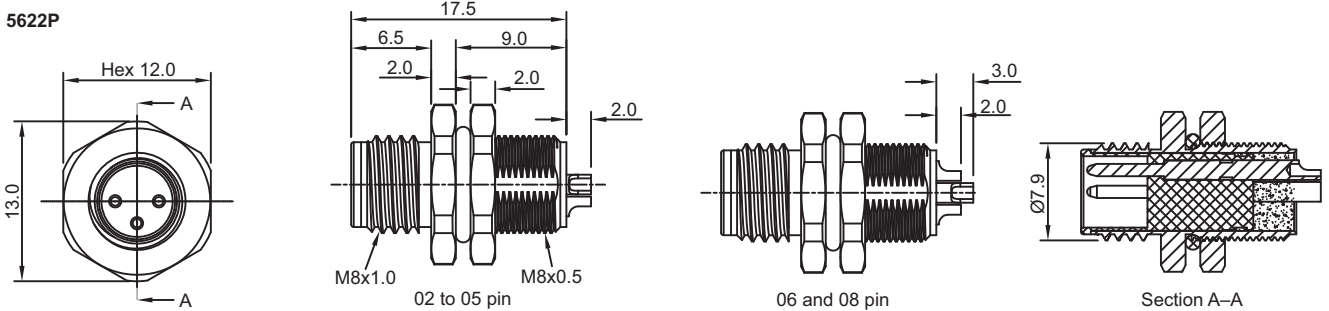
Insulator material	Nylon UL94V-0, color: black
Contact material	Copper alloy, plating: gold
Nut/Screw material	Copper alloy, plating: nickel
Current rating, voltage rating	see table
Contact resistance	5 mΩ max.
Insulator resistance	100 MΩ min.
Dielectrical withstanding	see table
Operating temperature	-40 °C to +85 °C
IP-Rating	IP 65
Soldering	Lead free hand soldering

Mating parts series



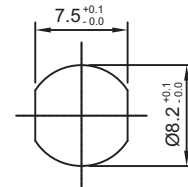
Mechanical dimensions

Unit: mm



Pin assignments front view

A-coding	2 pin	3 pin	4 pin	6 pin	8 pin
B-coding	5 pin				



Recommended panel cut-out thickness 3.5 max.

Electrical specification

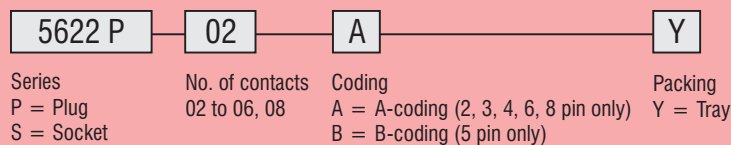
Pins	Current rating	Voltage rating	Dielectrical withstanding
02	3.0 A	60 V AC/DC	500 VAC for 1 min
03	3.0 A	60 V AC/DC	500 VAC for 1 min
04	3.0 A	30 V AC/DC	500 VAC for 1 min
05	3.0 A	30 V AC/DC	500 VAC for 1 min
06	1.5 A	30 V AC/DC	250 VAC for 1 min
08	1.5 A	30 V AC/DC	250 VAC for 1 min

continued on page 2

Tolerances

Linear	X.	±	Value
	X.	±	0.3
	X	±	0.2
	.XX	±	0.15

Part numbering guide



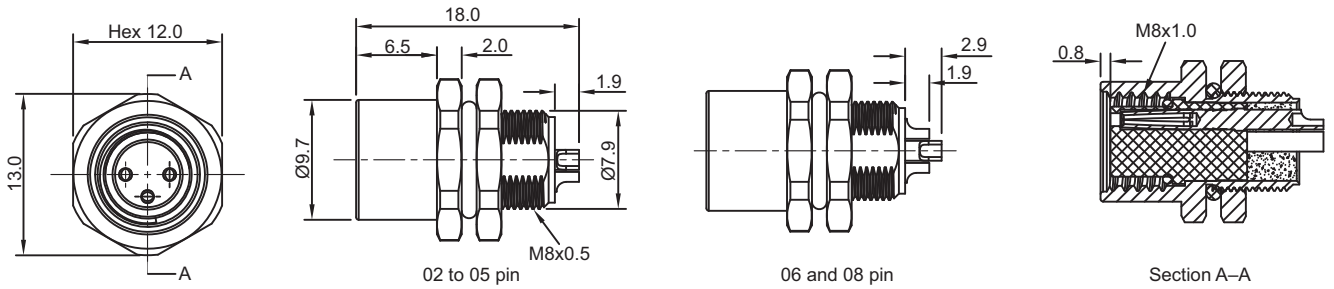
* standard



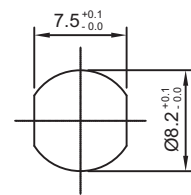
Mechanical dimensions

Unit: mm

5622S



Pin assignments front view					
A-coding	2 pin 	3 pin 	4 pin 	6 pin 	8 pin
B-coding	5 pin 				



Recommended panel cut-out thickness 3.5 max.

Tolerances

Linear	X.	± 0.3
	.X	± 0.2
	.XX	± 0.15

