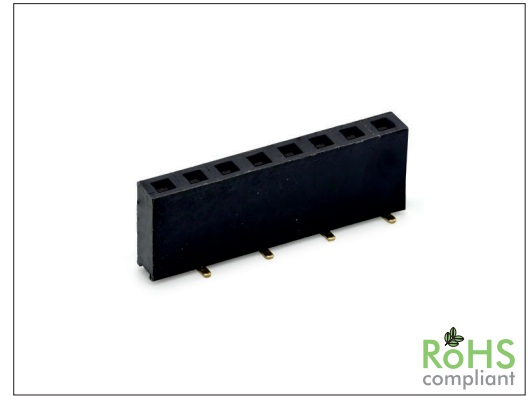


1655 Series

2.54 mm SMT Female Header Dual Entry

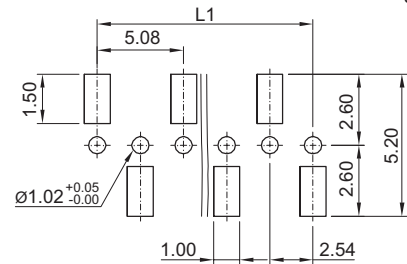
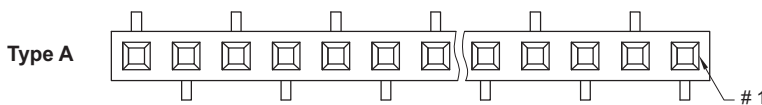
General specifications

Insulator material	Nylon 6T, UL94V-0
Contact material	Brass
Current rating	3 A
Contact resistance	20 mΩ max.
Insulator resistance	5000 MΩ min.
Dielectrical withstanding	500 VAC for 1 min
Operating temperature	-40 °C to +105 °C
Soldering	JEDEC lead free reflow soldering process
Mating parts series	
1510, 1515, 1530, 1610, 1613, 1630	

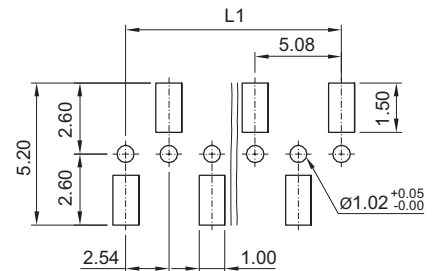
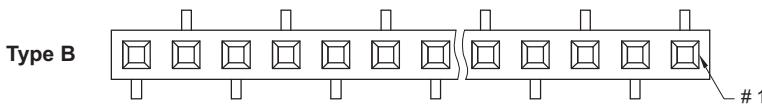


Mechanical dimensions

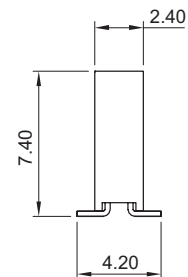
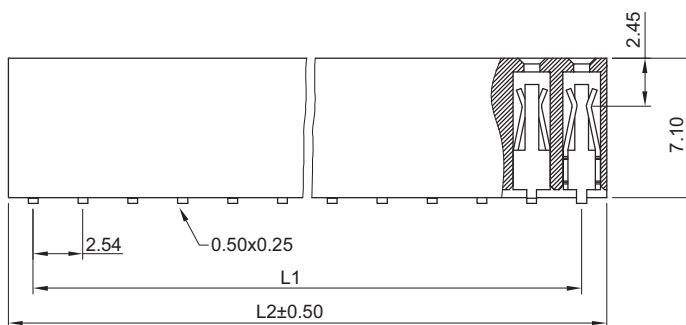
Unit: mm



Recommended P.C.B. layout



Recommended P.C.B. layout



$$L1 = (\text{No. of contacts} - 1) \times 2.54$$

$$L2 = \text{No. of contacts} \times 2.54 + 0.50$$

Tolerances		
Linear	X	± 0.30
	.XX	± 0.20

Part numbering guide

1655 V

Series
V = SMT vertical

03

No. of contacts
03 to 40

B

Contact plating
B = Flashgold
E = 10 μm gold
F = 15 μm gold
J = 30 μm gold

A

Position # 1
A = Bottom right
B = Top right

R

Packing with pick & place pad
R = Reel
T = Tube

* standard

