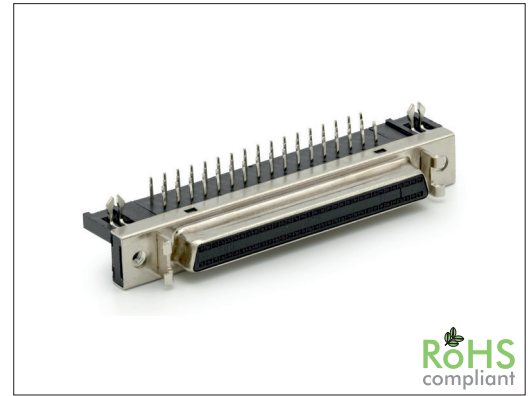


3200 Series

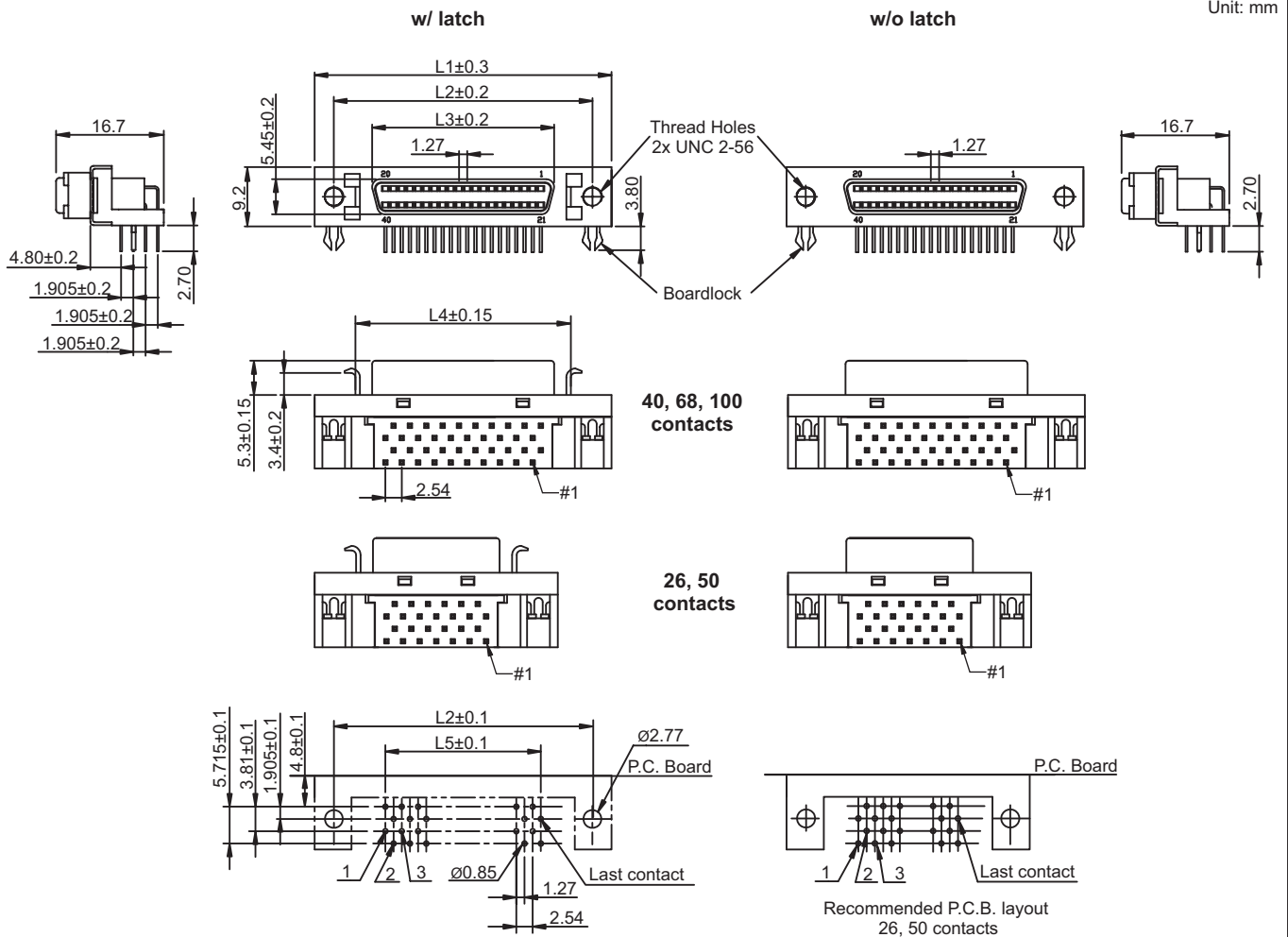
SCSI Pin Type Female Right Angle

General specifications	
Insulator material	PBT, UL94V-0
Contact material	Phosphor bronze
Shell/ bracket	Steel, plating: nickel over copper
Current rating	1 A
Contact resistance	35 mΩ max.
Insulator resistance	500 MΩ min.
Dielectrical withstanding	500 VAC for 1 min
Operating temperature	-55 °C to +105 °C
Soldering	Lead free wave soldering process
Mating parts series	
3203-M, 3206-M, 3208-M	



Mechanical dimensions

Unit: mm



40, 68, 100 contacts

26, 50 contacts

Recommended P.C.B. layout 26, 50 contacts

Contacts	L1	L2	L3	L4	L5	Bracket Opt.
26	37.19	31.26	19.45	24.65	21.59	L / S
40	46.30	40.15	28.25	33.45	24.13	L / S
50	52.43	46.50	34.70	39.90	30.48	L / S
68	63.86	57.93	46.13	51.33	41.91	L / S
100	84.18	78.23	66.45	-	62.23	S

Tolerances		
Linear	X.	± 0.30
	X	± 0.25
	.XX	± 0.15

Part numbering guide

3200 F	26	D	L
Series F = Female	No. of contacts 26, 40, 50, 68, 100	Contact plating D = 5 μ" gold* F = 15 μ" gold J = 30 μ" gold	Bracket option L = w/ latch S = w/o latch, for screw

* standard

